

Figure 1A

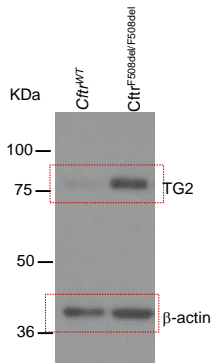


Figure 1B (upper)

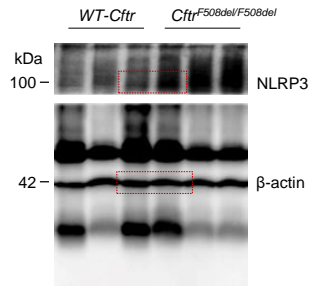


Figure 1B (bottom)

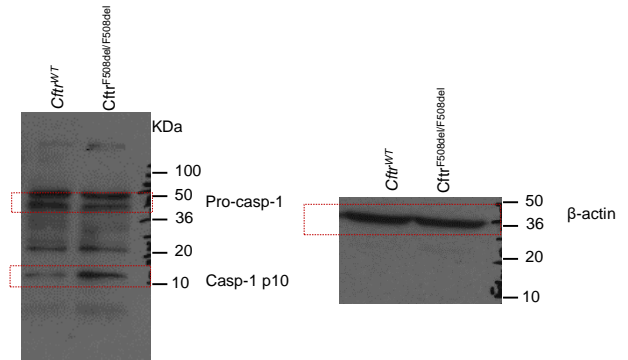


Figure 1C

Mice	IL17A			IFN γ		
	Mean pg/ml	sd	N (independent experiment)	Mean pg/ml	sd	N (independent experiment)
<i>Cfr</i> ^{WT}	13,44816	2,661894	3	49,73442	5,95819	3
<i>Cfr</i> ^{F508del/F508del}	38,77263	1,169848	3	24,22358	3,486608	3

Figure 1D

Mice	IL15 (protein)			IL15 (RNA)		
	Mean pg/ml	sd	N (independent experiment)	Mean	sd	N (independent experiment)
<i>Cfr</i> ^{WT}	727,4109	45,49475	3	1	0,14982	3
<i>Cfr</i> ^{F508del/F508del}	1579,831	246,4827	3	2,125408	0,786656	3
<i>Cfr</i> ^{WT(B6.129P2)}	696,1461	72,60883	3	1	0,144825	3
<i>Cfr</i> ^{-/-}	1276,305	92,93579	3	4,281365	0,822611	3

Figure 1E

Mice	IL15 (RNA)		
	Mean	sd	N (independent experiment)
<i>Cfr</i> ^{WT(C57B1/6)}	1	0,147549	3
<i>Cfr</i> ^{F508del/F508del}	3,072029	0,769449	3
<i>TG</i> ^{-/-} / <i>Cfr</i> ^{F508del/F508del}	2,032492	0,210481	3
<i>TG</i> ^{-/-}	1,459653	0,157926	3

		IL15			IL17A			IFN γ		
Sample	Mean pg/ml	sd	N (independent experiment)	Mean pg/ml	sd	N (independent experiment)	Mean pg/ml	sd	N (independent experiment)	
Cftr ^{WT}	683,5301	85,07632	3	11,95981	2,678177	3	48,79624	9,974725	3	
Cftr ^{WT} +gliadin	741,119	65,19674	3	13,90435	1,968227	3	47,60242	2,562716	3	
Cftr ^{F508del/F508del}	1723,725	102,4835	3	37,55623	1,124504	3	16,20077	6,091317	3	
Cftr ^{F508del/F508del} +gliadin	3341,062	87,87392	3	172,9976	5,149317	3	45,20969	5,841707	3	

		Il15			Il17A			Ifn γ		
Sample	Mean	sd	N (independent experiment)	Mean	sd	N (independent experiment)	Mean	sd	N (independent experiment)	
Cftr ^{WT}	1	0,18556	3	1	0,194503	3	1	0,138983	3	
Cftr ^{WT} +gliadin	1,258119	0,176416	3	0,970517	0,327228	3	0,978075	0,054226	3	
Cftr ^{F508del/F508del}	2,893908	0,202105	3	2,638867	0,632473	3	0,110206	0,048598	3	
Cftr ^{F508del/F508del} +gliadin	7,161823	0,692982	3	5,532923	0,487316	3	0,408238	0,021055	3	

Figure 1G

BALB/c	Ussing		
Sample	Mean	sd	N (independent experiment)
Vehicle	18	2,560273	3
Gliadin	4,9	0,2763861	3

Figure 1H

NOD	Ussing		
Sample	Mean	sd	N (independent experiment)
Vehicle	22,3	1,705872211	3
Gliadin	2,92	0,56302753	3

Figure 1I

NOD-DQ8	Ussing		
Sample	Mean	sd	N (independent experiment)
Vehicle	18,8	1,503329638	3
Gliadin	4,26	0,522494	3

Replicates

Figure 1A

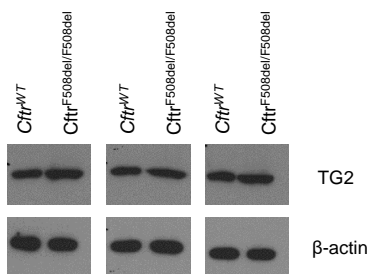


Figure 1B (bottom)

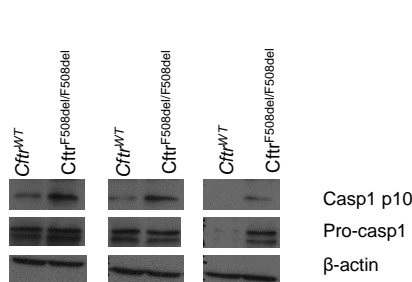


Figure 1B (upper)

