

Expanded View Figures

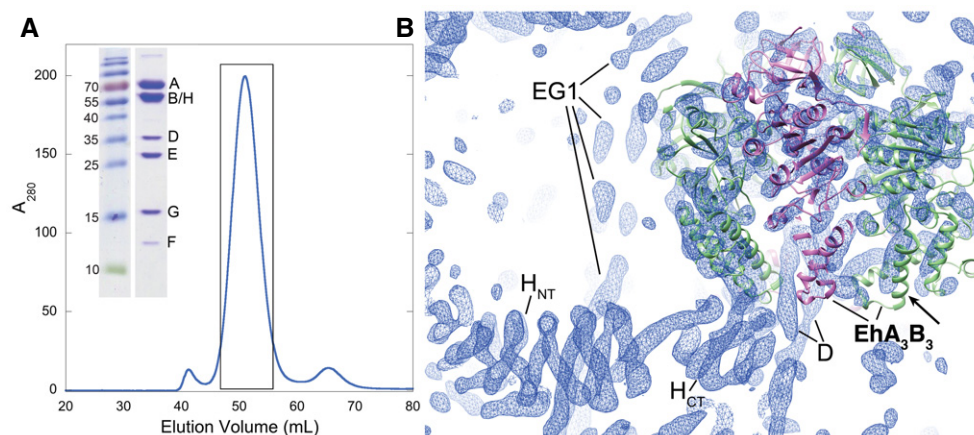


Figure EV1. Purification of ScV₁ and density-modified MR map.

- A Purification of ScV₁. The ~600-kDa ScV₁ (A₃B₃DE₃FG₃H) elutes as a single symmetrical peak from the gel filtration column. The boxed area was pooled and concentrated for crystallogensis of ScV₁. Inset: Coomassie blue-stained SDS-PAGE of the pooled and concentrated fractions.
- B NCS-averaged and density-modified MR map contoured at 1.4 σ showing the MR search model (EhA₃B₃, pink and green; 3vr5). It can be seen that some regions of the MR search model are offset from the corresponding α -helical electron density (see arrow), indicating a slight difference in conformation between catalytic hexamers of ScV₁ and EhV₁. Also note the extra density extending beyond the search model (labeled as EG1, D, H_{NT}, H_{CT}). The α -helical HEAT repeats of H_{NT} are clearly defined in the map.