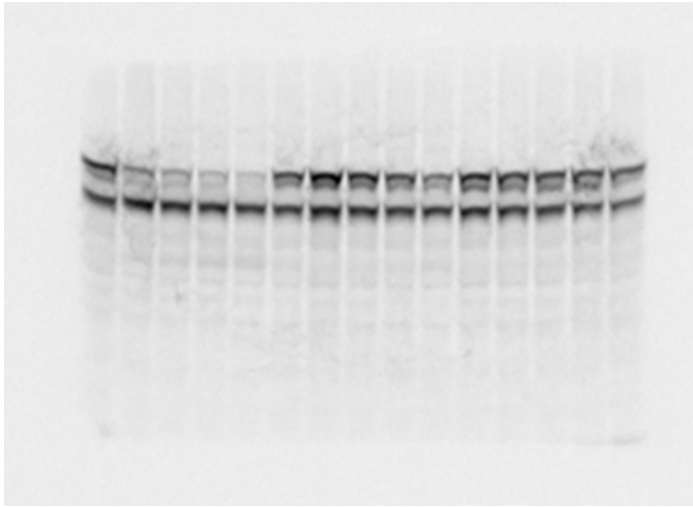
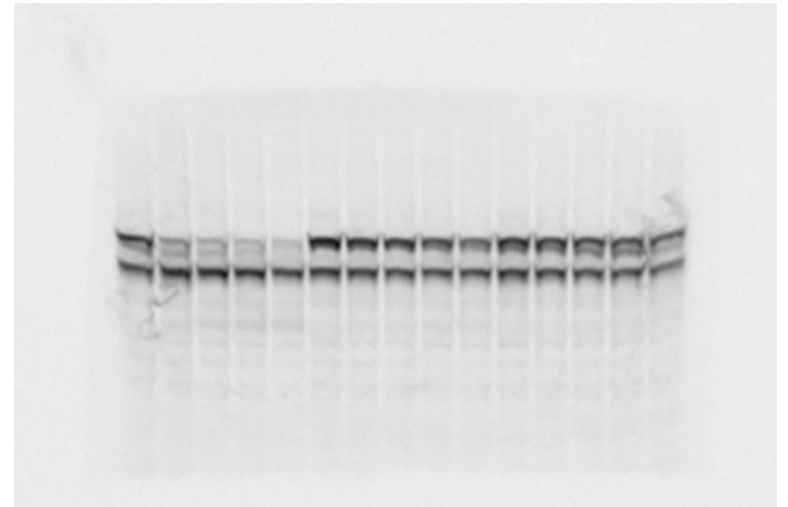


6A**WT**

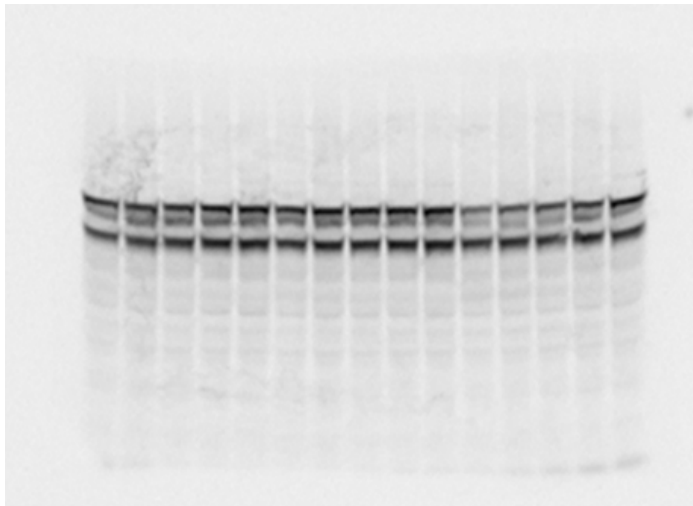
time (hrs)	0	¼	½	1	2	0	¼	½	1	2	0	¼	½	1	2
+/- inhibitor	-					EMI1					SECURIN				

**S6A**

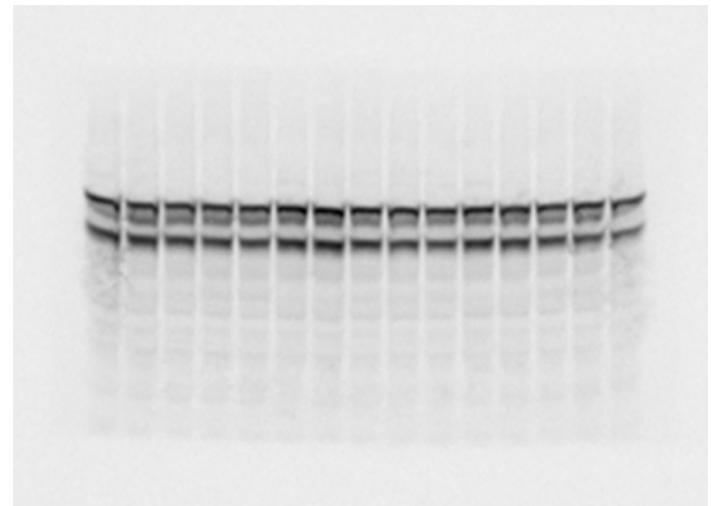
time (hrs)	0	¼	½	1	2	0	¼	½	1	2	0	¼	½	1	2
+/- inhibitor	-					EMI1					SECURIN				

**DM**

time (hrs)	0	¼	½	1	2	0	¼	½	1	2	0	¼	½	1	2
+/- inhibitor	-					EMI1					SECURIN				

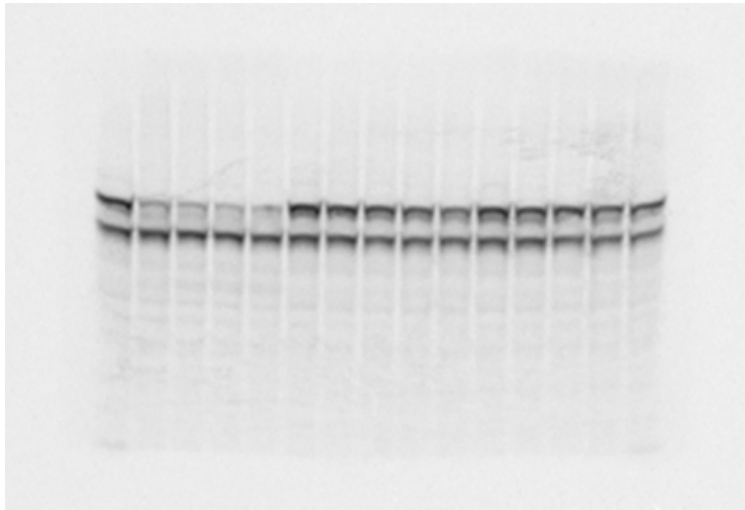
**S6D**

time (hrs)	0	¼	½	1	2	0	¼	½	1	2	0	¼	½	1	2
+/- inhibitor	-					EMI1					SECURIN				

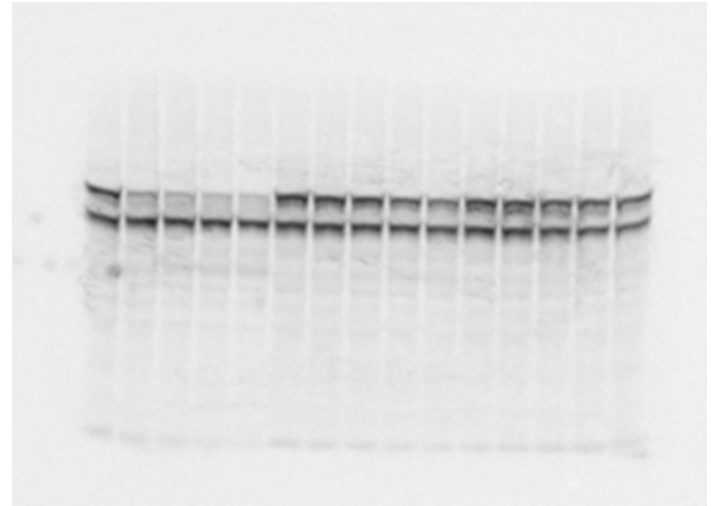


6A**S26D**

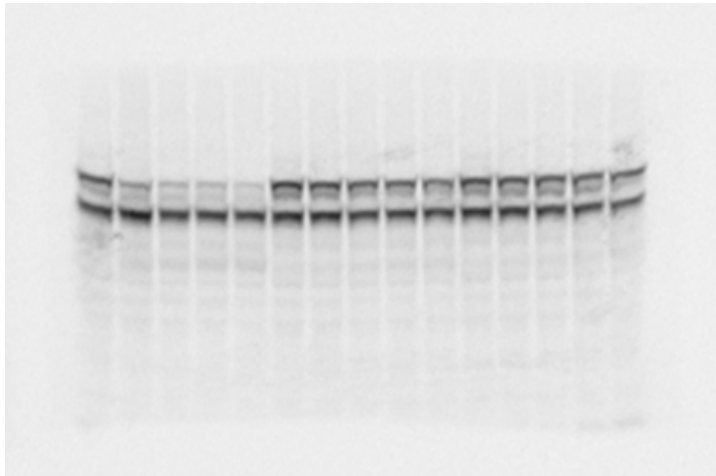
time (hrs)	0	¼	½	1	2	0	¼	½	1	2	0	¼	½	1	2
+/- inhibitor	-					EMI1					SECURIN				

**S31D**

time (hrs)	0	¼	½	1	2	0	¼	½	1	2	0	¼	½	1	2
+/- inhibitor	-					EMI1					SECURIN				

**S26A**

time (hrs)	0	¼	½	1	2	0	¼	½	1	2	0	¼	½	1	2
+/- inhibitor	-					EMI1					SECURIN				

**S31A**

time (hrs)	0	¼	½	1	2	0	¼	½	1	2	0	¼	½	1	2
+/- inhibitor	-					EMI1					SECURIN				

