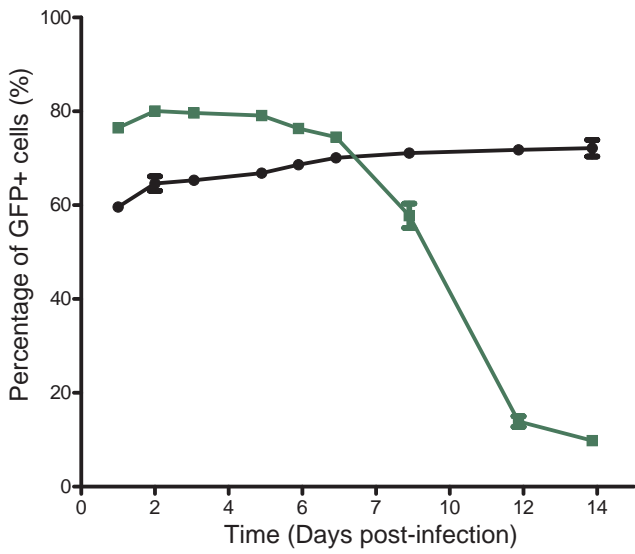
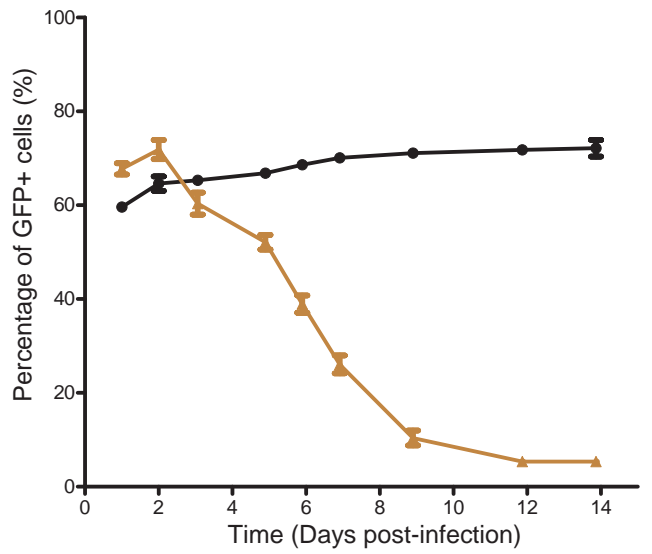


Figure S9

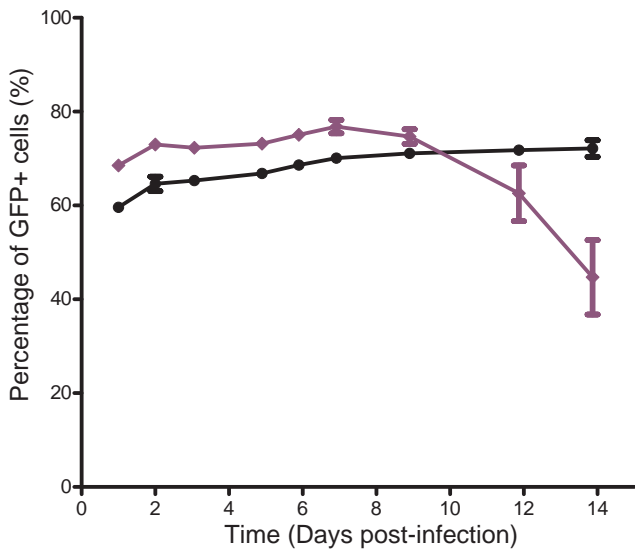
shErg



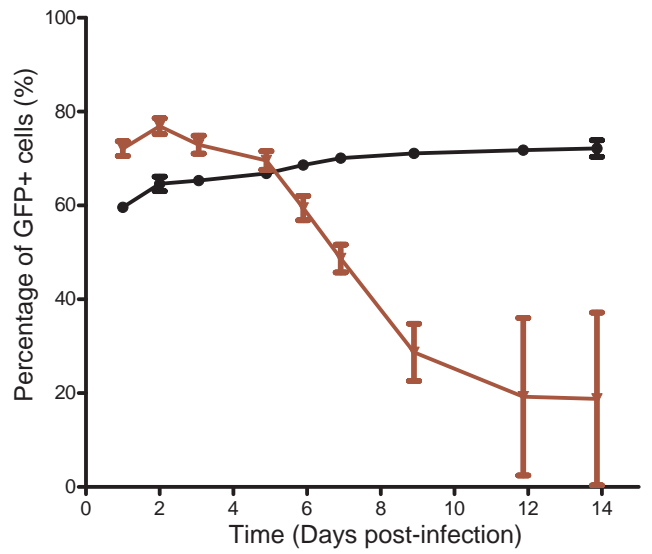
shFli1



shPu.1



shGata2



shLmo2

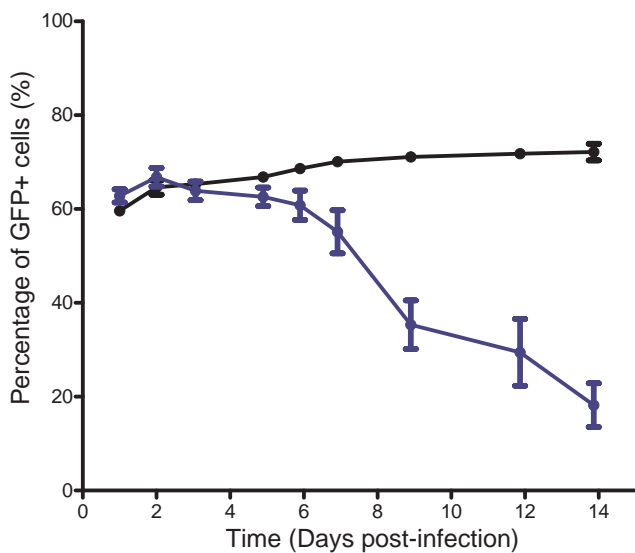


Figure S9 – Effect of knock-down of shared TFs in MST mast cell line growth. MST cells were transfected with constructs that contained shRNAs against Erg, Fli1, Gata2, Pu.1 or Lmo2 and expression cassette for GFP. Transfected cells expressed simultaneously shRNA and GFP. After infection, we maintained in culture infected and uninfected cells together and we monitored the percentage of GFP expressing cells by FACs for 2 weeks. Black lines correspond to the control (shLuciferase) while coloured lines correspond to the indicated TF. Reduction of levels of shared TFs had a pronounced growth effect when in competition with wild type cells. Representative experiment is shown. Standard error is depicted.