

## Review

# Mitochondrial dysfunction in Parkinson's disease: molecular mechanisms and pathophysiological consequences

Nicole Exner<sup>1</sup>, Anne Kathrin Lutz<sup>2,3</sup>,  
Christian Haass<sup>1,3</sup> and  
Konstanze F Winklhofer<sup>2,3,\*</sup>

<sup>1</sup>Biochemistry, Adolf Butenandt Institute, Ludwig Maximilians University, Munich, Germany, <sup>2</sup>Neurobiochemistry, Adolf Butenandt Institute, Ludwig Maximilians University, Munich, Germany and <sup>3</sup>German Center for Neurodegenerative Diseases (DZNE), Munich, Germany

Neurons are critically dependent on mitochondrial integrity based on specific morphological, biochemical, and physiological features. They are characterized by high rates of metabolic activity and need to respond promptly to activity-dependent fluctuations in bioenergetic demand. The dimensions and polarity of neurons require efficient transport of mitochondria to hot spots of energy consumption, such as presynaptic and postsynaptic sites. Moreover, the postmitotic state of neurons in combination with their exposure to intrinsic and extrinsic neuronal stress factors call for a high fidelity of mitochondrial quality control systems. Consequently, it is not surprising that mitochondrial alterations can promote neuronal dysfunction and degeneration. In particular, mitochondrial dysfunction has long been implicated in the etiopathogenesis of Parkinson's disease (PD), based on the observation that mitochondrial toxins can cause parkinsonism in humans and animal models. Substantial progress towards understanding the role of mitochondria in the disease process has been made by the identification and characterization of genes causing familial variants of PD. Studies on the function and dysfunction of these genes revealed that various aspects of mitochondrial biology appear to be affected in PD, comprising mitochondrial biogenesis, bioenergetics, dynamics, transport, and quality control.

*The EMBO Journal* (2012) 31, 3038–3062. doi:10.1038/emboj.2012.170; Published online 26 June 2012

**Subject Categories:** membranes & transport; neuroscience

**Keywords:** mitochondria; parkin; Parkinson; PINK1; synuclein

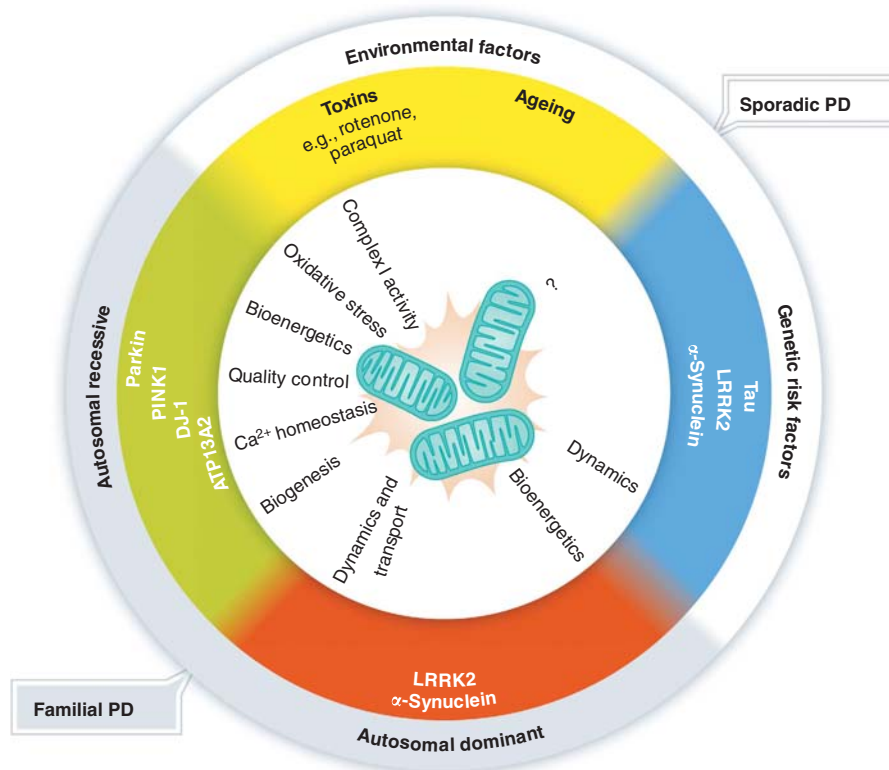
\*Corresponding author. Neurobiochemistry, German Center for Neurodegenerative Diseases (DZNE) Munich, Schillerstrasse 44, Munich 80336, Germany. Tel.: +49 89 2180 75483; Fax: +49 89 2180 75415; E-mail: Konstanze.Winklhofer@med.uni-muenchen.de

Received: 15 March 2012; accepted: 1 June 2012; published online: 26 June 2012

## Introduction

Parkinson's disease (PD) is a heterogeneous neurodegenerative disease entity typically diagnosed by its cardinal motor symptoms, including bradykinesia, hypokinesia, rigidity, resting tremor, and postural instability, which are subsumed under the syndrome of parkinsonism. The motor manifestations are attributable to the degeneration of dopaminergic (DA) neurons within the substantia nigra pars compacta (SNc), resulting in dopamine depletion and derangements of neuronal circuits in the basal ganglia target regions of these neurons. Another pathological hallmark of PD is the presence of  $\alpha$ -synuclein-containing deposits in neuronal perikarya (Lewy bodies) and processes (Lewy neurites). The role of Lewy bodies in the pathogenic process is discussed controversially. Parkinsonism can occur in the absence of Lewy bodies, for instance in some cases of familial PD or in drug-induced parkinsonism (Davis *et al.*, 1979; Langston *et al.*, 1999; Nuytemans *et al.*, 2010). On the other hand, Lewy body pathology is sometimes found at autopsy in individuals without reported symptoms of parkinsonism (Jellinger, 2009; Adler *et al.*, 2010). The manifestation of non-motor symptoms, some of which even precede the motor symptoms, reflect the fact that the neurodegenerative process is not limited to the SNc but has a much wider impact. Non-motor symptoms, such as autonomic dysfunction, sleep abnormalities, depression, and dementia, can contribute considerably to disability, as they usually are not responsive to dopamine replacement therapy.

The etiopathogenesis of sporadic PD, the most common form of parkinsonism, is complex with variable contributions of genetic susceptibility and environmental factors (Figure 1). Ageing is one of the most important risk factors for sporadic PD. Given the demographic trend towards an aged population, the prevalence of PD and thus its socioeconomic burden will increase dramatically in the next decades. Over the last 15 years enormous effort has been taken to unravel the role of genetics in PD pathogenesis. Linkage analyses discovered six genes associated with Mendelian forms of parkinsonism, and genome-wide association studies identified susceptibility genes contributing to the risk for sporadic PD. Strikingly, there is an overlap between Mendelian genes and risk genes in the case of  $\alpha$ -synuclein and *leucine-rich repeat kinase 2* (*LRRK2*), blurring the traditional boundaries between familial and sporadic PD. The identification of genes associated with parkinsonism has had a major impact on PD research, allowing to dissect molecular pathways implicated in the pathogenesis. From genetic cellular and animal models, it emerged that mitochondrial alterations, oxidative stress, and impaired clearance of misfolded proteins and damaged orga-



**Figure 1** Aetiology of Parkinson's disease (PD) and possible links to mitochondrial integrity. Familial PD is caused by mutations in genes identified by linkage analyses that are inherited in an autosomal recessive or dominant manner. Sporadic PD is considered to be a complex neurodegenerative disease entity with both genetic susceptibility and environmental factors contributing to the etiopathogenesis. Recent genome-wide association studies have identified susceptibility loci, which in two cases ( $\alpha$ -synuclein and LRRK2) overlap with classical PD genes, linking the aetiology of familial parkinsonism with that of sporadic PD. Both genetic and environmental factors influence various mitochondrial aspects, such as bioenergetics, dynamics, transport, and quality control.

nelles by proteasomal and lysosomal degradation pathways contribute to the disease process (reviewed in Dawson *et al*, 2010; Corti *et al*, 2011; Martin *et al*, 2011; and Shulman *et al*, 2011). Moreover, there is increasing evidence that sporadic and familial variants of PD share some common pathways that converge at mitochondria (reviewed in Abou-Sleiman *et al*, 2006; Lin and Beal, 2006; Mandemakers *et al*, 2007; Bogaerts *et al*, 2008; Henchcliffe and Beal, 2008; Schapira, 2008; Vila *et al*, 2008; Van Laar and Berman, 2009; Bueler, 2010; Burbulla *et al*, 2010; Winklhofer and Haass, 2010; and Schon and Przedborski, 2011). In the following, we will review our current knowledge on the role of mitochondria in PD pathogenesis and how these insights have changed our conceptual thinking and may eventually be translated into novel neuroprotective approaches.

## Mitochondrial dysfunction in sporadic PD

### **The role of complex I deficiency and mitochondrial DNA mutations**

The first link between parkinsonism and mitochondria became evident in the early 1980s, when it was discovered that a neurotoxin causing a parkinsonian syndrome inhibits mitochondrial respiration. MPTP (1-methyl-4-phenyl-1,2,3,6-tetrahydropyridine), a contaminant of an illicit opioid preparation which was used intravenously by drug addicts, can cross the blood-brain barrier and is taken up by DA neurons via the dopamine transporter after oxidation to MPP<sup>+</sup>

(Langston *et al*, 1983; Nicklas *et al*, 1985). Within DA neurons, MPP<sup>+</sup> accumulates in mitochondria and inhibits complex I (NADH ubiquinone oxidoreductase) of the electron transport chain. Although MPTP-induced parkinsonism results from an acute toxic insult and therefore differs from the slow and progressive disease process in sporadic PD, the impact of MPTP has been far reaching. In particular, MPTP and other complex I inhibitors such as rotenone are still being used to model PD in animals and to evaluate therapeutic approaches (reviewed in Hirsch, 2007; Bezard and Przedborski, 2011; and Cannon and Greenamyre, 2011). Interestingly, consumption of fruit and herbal teas from plants of the *Annonaceae* family, containing the complex I inhibitor annonacin, has been linked to the high frequency of atypical parkinsonism in Guadeloupe (Caparros-Lefebvre and Elbaz, 1999; Lannuzel *et al*, 2003; Champy *et al*, 2004), further substantiating a causal role of mitochondrial dysfunction in the pathogenesis of at least some parkinsonian syndromes. In support of a direct or indirect role of complex I, the activity of complex I has been reported to be reduced (in the range of 30%) in the SNc and frontal cortex of PD patients at autopsy (Schapira *et al*, 1989; Parker *et al*, 2008). In mitochondrial preparations from PD frontal cortex samples, complex I subunits derived from both mitochondrial and nuclear genomes were found to be oxidatively damaged, reflected by an increase in protein carbonyls (Keeney *et al*, 2006). This study also reported that the levels of an 8-kDa subunit of complex I were

reduced by 33% in PD frontal cortex, suggesting that oxidative damage may cause misassembly or reduced stability of complex I subunits. Remarkably, in about 25% of PD patients analysed complex I activities were found to be reduced also in platelets (reviewed in Schapira, 2008). This finding may indicate a systemic complex I defect in a subfraction of PD patients due to genetic and/or environmental causes. In a mouse model of mild complex I deficiency induced by the dopamine neuron-specific loss of the *Ndufs4* subunit, increased striatal dopamine turnover rates and decreased dopamine release from striatal axon terminals have been observed (Sterky *et al*, 2012). These alterations in striatal dopamine homeostasis may be caused by a reduced vesicular uptake of dopamine due to ATP deficiency followed by enhanced cytosolic dopamine metabolism, suggesting that impaired dopamine release may be an early consequence of mitochondrial impairment (Choi *et al*, 2011; Sterky *et al*, 2012).

Mitochondrial oxidative phosphorylation depends on both mitochondrial and nuclear DNA-encoded proteins. Mitochondrial DNA (mtDNA) encodes 13 proteins that are all subunits of respiratory chain complexes, 22 tRNAs, and 2 rRNAs. Mutations in mtDNA can be either inherited maternally or acquired and typically cause variable phenotypes in cells with high energy demands, such as neurons and muscle cells. Mouse models with defects in genes essential for the maintenance of mtDNA support the notion that alterations in the mitochondrial genome cause respiratory chain deficiencies and phenotypes associated with ageing and age-related diseases (reviewed in Reeve *et al*, 2008; Larsson, 2010; and Park and Larsson, 2011). Transgenic mice expressing a proofreading-deficient version of the mtDNA polymerase  $\gamma$  (*POLG*) accumulate mtDNA mutations and display features of premature ageing (Trifunovic *et al*, 2004; Kujoth *et al*, 2005). Notably, cosegregation of parkinsonism with mutations in the human *POLG1* gene has been reported in several families (reviewed in Orsucci *et al*, 2011). In support of a causative role of mitochondrial dysfunction in PD, mice with a DA neuron-specific deletion of the mitochondrial transcription factor TFAM, which is essential for mitochondrial transcription and maintenance of mtDNA, develop a parkinsonian phenotype reproducing key features of PD: adult onset, progressive impairment of motor functions responsive to L-DOPA therapy, and loss of midbrain DA neurons (Ekstrand *et al*, 2007). Similarly, expression of mitochondrially targeted *PstI* endonuclease in DA neurons, which induces double-strand breaks in mtDNA, causes progressive neuronal degeneration and striatal dopamine depletion (Pickrell *et al*, 2011).

An age-dependent increase in mtDNA deletions has been found in individual DA neurons dissected from the SNc of *post mortem* human brain (Bender *et al*, 2006; Kraytsberg *et al*, 2006). Neurons harbouring >60% of mtDNA molecules with deletions showed a significant decrease in cytochrome c oxidase, three catalytic subunits of which are encoded by mtDNA. Different types of mtDNA deletions were found in the same individual, but each neuron contained only a single mtDNA mutation, indicating that the mutation was acquired and clonally expanded. In comparison with age-matched controls, the amount of mtDNA mutations was slightly higher in DA neurons from PD patients (Bender *et al*, 2006). Moreover, SNc neurons seem to be particularly

vulnerable to mtDNA mutations, since hippocampal neurons or pyramidal cortical neurons of aged individuals did not contain high levels of mtDNA mutations.

There is currently no strong evidence that mtDNA mutations are a major primary cause of PD. However, it seems quite plausible that mtDNA mutations accumulate in the course of the disease as a consequence of an increase in cellular stress and mitochondrial replication errors along with a decrease in the fidelity of quality control systems. Once the mtDNA mutations surpass a critical threshold, the resulting respiratory deficiency may contribute to neuronal degeneration and cell death. Of note, complex I is particularly vulnerable to mtDNA damage, since seven of its subunits are encoded by mtDNA.

### **Mitochondrial dysfunction and oxidative stress**

According to a widespread concept, inhibition of complex I decreases mitochondrial ATP production and increases the formation of reactive oxygen species (ROS), which damage mtDNA, components of the respiratory chain and other mitochondrial factors, thereby triggering a vicious circle between mitochondrial impairment and oxidative stress (reviewed in Abou-Sleiman *et al*, 2006; Lin and Beal, 2006; and Henchcliffe and Beal, 2008). This model has been particularly popular to explain the increased vulnerability of SNc DA neurons, since this neuronal population is characterized by a high oxidative burden and a low anti-oxidant capacity. Mitochondria can be both a source and a target of ROS (reviewed in Starkov, 2008 and Murphy, 2009). However, an obligatory link between mitochondrial dysfunction and increased ROS production has been questioned based on weak experimental support for such a scenario *in vivo* (reviewed in Fukui and Moraes, 2008; Gems and Doonan, 2009; and Park and Larsson, 2011). For example, rotenone toxicity has been reported to be caused by spare respiratory capacity rather than oxidative stress. In primary neurons, rotenone does increase the formation of mitochondrial superoxide, however, trapping superoxide fails to reduce rotenone toxicity (Yadava and Nicholls, 2007). In addition, various mouse models with severe respiratory chain deficiency display increased apoptotic cell death but not increased ROS formation or oxidative stress (Wang *et al*, 2001; Kujoth *et al*, 2005; Trifunovic *et al*, 2005; Kruse *et al*, 2008). Moreover, ROS are not always harmful agents, they also act as important signal transducers in a variety of biological processes.

### **Mitochondrial effects of genes associated with PD**

#### ***Parkin*: a versatile neuroprotective E3 ubiquitin ligase**

The *parkin* gene has been identified in 1998 as a causative gene for autosomal recessive parkinsonism (Kitada *et al*, 1998). More than 100 pathogenic *parkin* mutations have been reported, accounting for the majority of autosomal recessive parkinsonism. The *parkin* gene encodes a cytosolic 465 amino-acid protein with a ubiquitin-like (UBL) domain at the N-terminus and an RBR (RING-between-RING) domain close to the C-terminus. The RBR domain is composed of two RING fingers that flank an in-between RING (IBR) domain and coordinates six zinc ions. An additional RING finger domain (RING0) has been

identified between the UBL and RBR motifs, which contributes to the binding of zinc ions (Hristova *et al*, 2009). Coordination of zinc ions (eight  $Zn^{2+}$  in total) is essential for parkin to adopt and maintain its correct three-dimensional structure, consistent with the observation that pathogenic mutations within the zinc-binding motifs are inactivated by misfolding (Cookson *et al*, 2003; Gu *et al*, 2003; Sriram *et al*, 2005; Wang *et al*, 2005b, 2007). Moreover, the cysteine-rich RBR domain renders parkin vulnerable to inactivation by severe oxidative stress (Winklhofer *et al*, 2003; LaVoie *et al*, 2007; Wong *et al*, 2007; Schlehe *et al*, 2008). Oxidatively modified, misfolded parkin has indeed been found in the brains of PD patients, suggesting that inactivation of parkin may also play a role in sporadic PD (Pawlyk *et al*, 2003; Chung *et al*, 2004; Yao *et al*, 2004; LaVoie *et al*, 2005; Wang *et al*, 2005a). In support of this notion, the c-Abl tyrosine kinase has been reported to be activated in DA neurons of sporadic PD patients, leading to the phosphorylation and inactivation of parkin (Ko *et al*, 2010; Imam *et al*, 2011).

The presence of the RBR domain suggested that parkin acts as an E3 ubiquitin ligase, mediating the covalent attachment of ubiquitin moieties to substrate proteins (Shimura *et al*, 2000; Zhang *et al*, 2000). Considerable evidence has been accumulated indicating that parkin can catalyse various modes of ubiquitination, including poly-ubiquitination with different lysine linkages or mono-ubiquitination. The linkage type determines the fate of the ubiquitinated protein; ubiquitin chain linkage via Lys48 typically targets substrates for proteasomal degradation, whereas linkage involving other lysine residues and mono-ubiquitination or multiple mono-ubiquitination are implicated in numerous regulatory processes, such as signal transduction, trafficking, DNA damage response, DNA repair, and autophagy (reviewed in Komander, 2009; Ikeda *et al*, 2010; and Behrends and Harper, 2011). There are two major classes of E3 ubiquitin ligases: HECT ligases transiently accept ubiquitin from an E2 conjugating enzyme at a cysteine residue within the HECT domain to form a thioester, whereas RING-type ligases act as bridging proteins that bring the ubiquitin-charged E2 in close proximity to the substrate, but are not ubiquitinated themselves (reviewed in Deshaies and Joazeiro, 2009). It was recently shown that parkin functions as an RING/HECT hybrid: RING1 binds to a ubiquitin-charged E2 conjugating enzyme, which transfers ubiquitin to a conserved cysteine residue in RING2, thereby forming a thioester between parkin and ubiquitin (Wenzel *et al*, 2011). Ubiquitin is then discharged to a lysine residue of the substrate protein. So far, this mechanism has been demonstrated *in vitro* with recombinant parkin and auto-ubiquitination of parkin as a surrogate substrate, but undoubtedly, these findings have a major impact on our understanding of the substrate specificity of RBR E3 ligases.

To date, about 30 putative parkin substrates have been reported and both degradative and non-degradative ubiquitination were attributed to parkin (reviewed in Dawson and Dawson, 2010). These substrates do not fit into a common pathway that could unravel the function of parkin. However, from a plethora of studies in cellular and animal models it emerged that parkin has a remarkably wide protective capacity. The increased expression of parkin both *in vitro* and *in vivo* protects against cell death in various stress paradigms, such as mitochondrial stress, endoplasmic

reticulum (ER) stress, excitotoxicity, and proteotoxic stress (reviewed in Moore, 2006 and Pils and Winklhofer, 2012). *Vice versa*, parkin-deficient cells are characterized by an increased vulnerability to stress-induced cell death. Surprisingly, the sensitivity of parkin knockout (KO) mice to neurotoxins, such as MPTP or 6-OHDA seems not to be increased; nigral degeneration in parkin KO mice has only been reported after inflammatory stimulation by lipopolysaccharide (Perez *et al*, 2005; Thomas *et al*, 2007; Frank-Cannon *et al*, 2008). In line with parkin playing a role in the cellular stress response, *parkin* gene expression is considerably upregulated under cellular stress. ATF4 and p53 have been shown to increase parkin expression, whereas c-Jun and N-myc act as transcriptional repressors of *parkin* (West *et al*, 2004; Bouman *et al*, 2011; Zhang *et al*, 2011).

Several viability pathways were reported to be influenced by parkin, including JNK, PI3K, and NF- $\kappa$ B signalling, p53 transcriptional activity, or Bax activation (Cha *et al*, 2005; Yang *et al*, 2005; Fallon *et al*, 2006; Henn *et al*, 2007; Hasegawa *et al*, 2008; da Costa *et al*, 2009; Sha *et al*, 2010; Johnson *et al*, 2012). Parkin has recently been shown to induce the proteasomal degradation of PARIS (parkin-interacting substrate), which acts as a transcriptional repressor of *PGC-1 $\alpha$*  (peroxisome proliferator-activated receptor gamma-co-activator 1-alpha) (Shin *et al*, 2011). *PGC-1 $\alpha$*  stimulates mitochondrial biogenesis as a co-activator of various transcription factors, such as NRF (nuclear respiratory factor)-1 and -2 (reviewed in Scarpulla, 2011). Thus, loss of parkin function suppresses mitochondrial biogenesis through an accumulation of PARIS. This study not only provided an important link between the protective activity of parkin and mitochondria but also implicated a transcriptional program in mediating the effects of parkin. Moreover, by generating conditional parkin KO mice Dawson and coworkers could show for the first time that loss of parkin function in adult mice leads to a progressive degeneration of DA neurons which can be suppressed by silencing PARIS expression (Shin *et al*, 2011). This finding supports the notion that developmental compensation accounts for the absence of major phenotypic alterations in germline parkin KO mice.

### **Parkin at the interface of neurodegeneration and cancer**

In an attempt to characterize FRA6E, one of the most active common fragile sites in the human genome located at chromosome 6q25-q27, the *parkin* genomic structure was found to span a large region of FRA6E (Cesari *et al*, 2003; Denison *et al*, 2003a). Common fragile sites are specific loci that are susceptible to chromosomal breaks and rearrangements and seem to play a role in oncogenesis. Studies to detect genomic copy number variations in human ovarian and breast carcinomas identified a common minimal region of loss located within the *parkin* gene. Indeed, decreased or absent parkin expression was observed in various malignancies (Cesari *et al*, 2003; Denison *et al*, 2003a, b; Picchio *et al*, 2004; Wang *et al*, 2004; Agirre *et al*, 2006; Fujiwara *et al*, 2008; Ikeuchi *et al*, 2009; Poulgiannis *et al*, 2010; Veeriah *et al*, 2010; Mehdi *et al*, 2011). Several studies have now provided considerable evidence that *parkin* might be a *bona fide* tumour suppressor gene (TSG). Heterozygous deletion of *parkin* accelerated the development of intestinal adenoma in mice expressing mutant APC, a regulator of Wnt signalling (Poulgiannis *et al*, 2010). Upon  $\gamma$ -irradiation parkin KO mice developed lymphomas in the spleen with a shorter tumour

latency compared with wild-type mice (Zhang *et al*, 2011). In one line of parkin KO mice lacking exon 3, enhanced hepatocyte proliferation and development of hepatic tumours has been observed (Fujiwara *et al*, 2008). Ectopic expression of parkin in parkin-deficient tumour cells lines (glioma cells or lung cancer cells) resulted in reduced tumour growth after injection of these cells as xenografts into nude mice (Picchio *et al*, 2004; Veeriah *et al*, 2010). Some studies reported that parkin overexpression inhibits cell proliferation, albeit this is not a consistent finding (Picchio *et al*, 2004; Poulogiannis *et al*, 2010; Tay *et al*, 2010; Veeriah *et al*, 2010).

The mechanism underlying the tumour suppressor activity of parkin is not well understood. A previous study identified cyclin E as a substrate of parkin for ubiquitination and proteasomal degradation in neuronal cells (Staropoli *et al*, 2003); therefore, it is tempting to speculate that a decrease in parkin expression results in an accumulation of cyclin E, a cell-cycle regulator required for the transition from G1 to S phase. Increased levels of cyclin E have been observed in some but not all parkin-deficient primary tumours and cancer cell lines (Ikeuchi *et al*, 2009; Tay *et al*, 2010; Veeriah *et al*, 2010; Yeo *et al*, 2012). Based on the effect of parkin on mitochondrial bioenergetics as reviewed further below, it is also conceivable that parkin exerts its tumour suppressor activity via influencing tumour metabolism. Evidence for such a scenario was recently provided by Feng and coworkers (Zhang *et al*, 2011). A hallmark of tumour cells is the switch from mitochondrial energy production to aerobic glycolysis, which is known as the Warburg effect (reviewed in Vander Heiden *et al*, 2009 and Cairns *et al*, 2011). To compensate for the lower efficiency of ATP production by glycolysis compared with mitochondrial respiration, tumour cells increase glucose uptake and utilization. An important role in regulating energy metabolism plays the TSG p53, a transcription factor that promotes mitochondrial respiration and reduces glycolysis via transcription of specific target genes. *Parkin* was recently identified as a p53 target gene, which can mediate effects of p53 on energy metabolism and antioxidant defense (Zhang *et al*, 2011). Parkin deficiency activates glycolysis and reduces mitochondrial respiration in human lung cancer cells and mouse embryonic fibroblasts, thereby contributing to the Warburg effect. Remarkably, parkin can also affect lipid metabolism by regulating fatty acid uptake. In wild-type mice, parkin expression is robustly upregulated upon exposure to a high fat and cholesterol diet (HFD), inducing the stabilization of the fatty acid transporter CD36, whereas parkin KO mice are resistant to weight gain and hepatic insulin resistance under HFD feeding (Kim *et al*, 2011).

Whether germline pathogenic mutations in the *parkin* gene can increase the risk for cancer is difficult to assess given that parkin-linked parkinsonism is rare and a large number of cases would be required for a statistically robust epidemiological study (reviewed in Plun-Favreau *et al*, 2010 and Devine *et al*, 2011).

### ***PINK1: a mitochondrial kinase of complex regulation and processing***

The *PINK1* (PTEN-induced putative kinase 1) gene was linked to autosomal recessive early onset PD in 2004 (Valente *et al*, 2004). It encodes a ubiquitously expressed 581 amino-acid protein with an N-terminal mitochondrial targeting sequence

(MTS), a transmembrane domain and a highly conserved serine/threonine kinase domain with homology to the Ca<sup>2+</sup>/calmodulin family. About 30 pathogenic *PINK1* mutations have been identified, among them missense, non-sense, or frameshift mutations, deletions or genomic rearrangements (reviewed in Deas *et al*, 2009; Nuytemans *et al*, 2010; and Corti *et al*, 2011). Most *PINK1* mutations have been described to impair its kinase activity or reduce the stability of the protein, in line with a loss of function mechanism.

The subcellular localization of PINK1 is still debated. PINK1 has been found at the outer and inner mitochondrial membrane and in the cytosol (Silvestri *et al*, 2005; Muqit *et al*, 2006; Haque *et al*, 2008; Lin and Kang, 2008; Weihofen *et al*, 2009; Jin *et al*, 2010; Narendra *et al*, 2010b; Murata *et al*, 2011; Shi *et al*, 2011). From recent research, a complex mechanism of PINK1 targeting and processing has emerged that could provide an explanation for the different observations regarding PINK1 localization. PINK1 seems to be imported via the TOM/TIM23 complexes at the outer/inner mitochondrial membrane in a membrane potential-dependent manner for cleaving off its MTS by the mitochondrial processing protease (Greene *et al*, 2012). PINK1 exposing its kinase domain to the intermembrane space could then be released from the transport pore by lateral diffusion to be further processed by a protease giving rise to a PINK1 fragment, which is subsequently degraded by an MG132-sensitive protease, possibly in the cytoplasm. How this retrotranslocation is mediated, is not known. It has been hypothesized that proteolytic cleavage of a PINK1 import intermediate still associated with the TOM complex leads to a C-terminal PINK1 fragment that reaches the cytoplasm by reverse translocation (Meissner *et al*, 2011). PARL (presenilin-associated rhomboid like protease) has recently been identified as a protease promoting PINK1 cleavage under basal conditions to keep mitochondrial PINK1 levels low (Whitworth *et al*, 2008; Jin *et al*, 2010; Deas *et al*, 2011; Meissner *et al*, 2011; Shi *et al*, 2011). When the mitochondrial membrane potential is dissipated, PINK1 mitochondrial import and processing by PARL is inhibited, leading to the integration of PINK1 into the outer mitochondrial membrane, which is a prerequisite to recruit parkin for the induction of mitophagy (Jin *et al*, 2010; Matsuda *et al*, 2010; Narendra *et al*, 2010b; Meissner *et al*, 2011) (see below). In depolarized mitochondria, endogenous PINK1 is associated with the TOM complex, which may allow rapid reimport of PINK1 after repolarization to switch off the mitophagy pathway (Lazarou *et al*, 2012). Interestingly, PINK1 can be processed in the absence of PARL resulting in a slightly different cleavage pattern, thus, PARL is apparently not the only protease capable of PINK1 processing (Narendra *et al*, 2010b; Shi *et al*, 2011; Greene *et al*, 2012).

PINK1 can increase the resistance to diverse cellular stressors in a kinase-dependent manner (Petit *et al*, 2005; Haque *et al*, 2008; Wood-Kaczmar *et al*, 2008; Gandhi *et al*, 2009; Morais *et al*, 2009; Sandebring *et al*, 2009; Klinkenberg *et al*, 2010; Murata *et al*, 2011; Wang *et al*, 2011b). Of note, PINK1 deficiency in mice, as demonstrated in germline PINK1 KO mice or in shRNA-mediated PINK1 knockdown mice, significantly increases sensitivity of DA neurons to systemic MPTP treatment (Haque *et al*, 2012). Nigrostriatal degeneration in these models can be prevented by virally expressed parkin or DJ-1, suggesting that these genes are

either downstream or act in parallel pathways to confer stress protection. To get insight into the mechanism underlying the protective activity of PINK1, efforts have been intensified to identify its substrates. Pridgeon *et al* (2007) reported that PINK1 phosphorylates TRAP1 (TNF receptor-associated protein 1), a mitochondrial chaperone of the Hsp90 family also known as Hsp75. Phosphorylation of TRAP1 was shown to be essential for the protective activity of PINK1 against oxidative stress. Plun-Favreau *et al* (2007) identified the mitochondrial serine protease HtrA2/Omi as a PINK1 interactor. A direct interaction between PINK1 and HtrA2/Omi favours the phosphorylation of HtrA2/Omi, which seems to be mediated by the p38 stress kinase pathway. Phosphomimetic HtrA2/Omi mutants show an increased protease activity along with the ability to protect against mitochondrial toxins. In another approach to identify PINK1-interacting proteins by immunopurification, the mitochondrial outer membrane Rho-like GTPase Miro2 and the adaptor protein Milton were found to form a complex with PINK1 (Weihsen *et al*, 2009). By binding to both Miro (two human homologues Miro1 and Miro2) and kinesin heavy chain, Milton links mitochondria to microtubules for axonal transport (Guo *et al*, 2005; Glater *et al*, 2006). The physical interaction of PINK1 and Miro therefore suggested that PINK1 has an impact on mitochondrial transport. In a recent study employing cultured rat hippocampal neurons or *Drosophila* larval neurons, it was indeed observed that the overexpression of either PINK1 or parkin causes an arrest of mitochondrial transport (Wang *et al*, 2011d). Based on the known interaction between PINK1 and Miro, Schwarz and coworkers followed up the idea that PINK1 and parkin may directly modify Miro. Miro1 was shown to be a direct target of PINK1 for phosphorylation, and Miro1 phosphorylated at serine 156 in turn is degraded by the proteasome in a parkin-dependent manner. This observation fits into a model in which degradation of Miro induced by the PINK1/parkin pathway stops mitochondrial movement and helps to sequester damaged mitochondria prior to their elimination by mitophagy (see below). A recent study from Bingwei Lu's laboratory showed that PINK1 and Miro have opposing effects on mitochondrial flux and net velocity in *Drosophila* larval motor neurons (Liu *et al*, 2012). Overexpression of PINK1 or Miro RNAi inhibited axonal mitochondrial transport in both anterograde and retrograde directions, and downregulation of Miro rescued PINK1 mutant phenotypes in *Drosophila* muscles and DA neurons. Liu *et al* also found that overexpression of PINK1 and parkin reduces Miro1 levels in HeLa cells, but phosphorylation of Miro1 at serine 156 was not required for this effect. Intriguingly, whereas Miro protein levels were increased in PINK1 mutant flies, the opposite effect was observed in mammalian models of PINK1 deficiency. In mouse embryonic fibroblasts from PINK1 KO mice or in PINK1 RNAi HeLa cells, Miro protein levels were significantly reduced, possibly reflecting differences between *Drosophila* and mammalian cells to respond to and compensate for PINK1 loss of function. An impact of PINK1 on mitochondrial transport was also observed by Mandelkow and coworkers who found that MARK2 (microtubule affinity-regulating kinase 2) phosphorylates N-terminally truncated PINK1 thereby increasing its kinase activity (Matenia *et al*, 2012). Whereas N-terminally truncated PINK1 overexpressed in chicken retinal ganglion cells promotes anterograde

mitochondrial transport and increases the fraction of stationary mitochondria, full-length PINK1 enhances retrograde transport, suggesting that PINK1 may act as a molecular switch between anterograde and retrograde mitochondrial transport depending on the mitochondrial membrane potential.

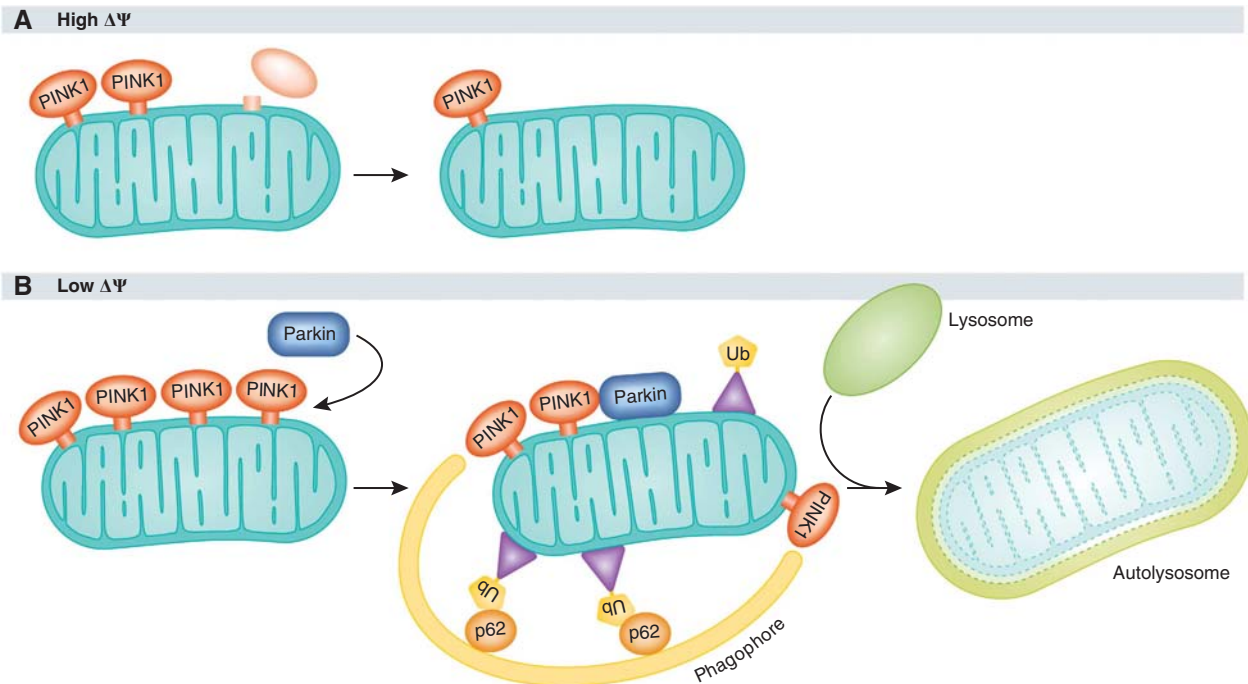
The mechanisms of protection mediated by PINK1 are not completely understood. It has been suggested that effects on mitochondrial bioenergetics, quality control, and calcium homeostasis are involved. In various PINK1 loss of function models, mitochondrial impairment has been observed, such as alterations in mitochondrial morphology and dynamics, a decrease in mitochondrial membrane potential, and respiration defects (Exner *et al*, 2007; Hoepken *et al*, 2007; Gautier *et al*, 2008; Piccoli *et al*, 2008; Dagda *et al*, 2009, 2011; Gegg *et al*, 2009; Gispert *et al*, 2009; Lutz *et al*, 2009; Sandebring *et al*, 2009; Cui *et al*, 2010; Yuan *et al*, 2010; Amo *et al*, 2011; Heeman *et al*, 2011). Decreased complex I enzymatic activity was found in fly and mouse models lacking PINK1 and suggested to be the primary event leading to synaptic dysfunction under increased energy demand, based on the observation that the mobilization of reserve pool synaptic vesicles during rapid stimulation is impaired at the neuromuscular junction in PINK1-deficient flies and can be rescued by supplementing synapses with ATP (Morais *et al*, 2009). Moreover, downregulation of a complex I component in flies phenocopies several PINK1 mutant phenotypes (Vilain *et al*, 2012). An alternative explanation was provided by Abramov and coworkers who observed an imbalance of calcium homeostasis in PINK1-deficient cells (Gandhi *et al*, 2009). When PINK1 is downregulated by RNAi in neurons derived from human embryonic stem cells, cellular stress results in mitochondrial calcium overload due to the dysfunction of the  $\text{Na}^+/\text{Ca}^{2+}$  exchanger. Mitochondrial  $\text{Ca}^{2+}$  overload in turn stimulates ROS production, inhibits the glucose transporter and reduces respiratory functions.

### **Parkin and PINK1: team players in the removal of damaged mitochondria**

Surprisingly, neither parkin nor PINK1 KO mice show an overt morphological or behavioural phenotype, which may be explained by developmental compensation or functional redundancy. However, both parkin and PINK1-deficient cells are characterized by an increased vulnerability to mitochondrial damage (Casarejos *et al*, 2006; Rosen *et al*, 2006; Henn *et al*, 2007; Paterna *et al*, 2007; Haque *et al*, 2008, 2012; Sandebring *et al*, 2009), indicating that mitochondrial alterations can be compensated under basal but not under stress conditions. Remarkably, parkin or PINK1 mutant flies display a striking and surprisingly similar phenotype, including reduced life span, male sterility, and apoptotic flight muscle degeneration. In flies and cultured cells, parkin can rescue PINK1 deficiency but not *vice versa*, indicating that parkin is acting downstream of PINK1 (Clark *et al*, 2006; Park *et al*, 2006; Yang *et al*, 2006; Exner *et al*, 2007; Lutz *et al*, 2009).

Evidence for a linear PINK1/parkin mitochondrial pathway was first provided by Richard Youle's laboratory. Narendra *et al* (2008) observed that parkin is targeted to damaged mitochondria in a PINK1-dependent manner and induces their degradation by mitophagy, a selective mode of





**Figure 2** Mechanism of PINK1- and parkin-induced mitophagy. (A) When the mitochondrial membrane potential is high, PINK1 is imported into mitochondria, proteolytically processed and rapidly degraded, resulting in mitochondria with low levels of endogenous PINK1 under basal conditions. (B) Under conditions of low membrane potential, for example, after uncoupling with CCCP, full-length PINK1 accumulates on the mitochondrial surface, which is essential for the translocation of parkin to mitochondria. Parkin then ubiquitinates mitochondrial proteins at the outer membrane, followed by the recruitment of adaptor proteins, such as p62, which link ubiquitinated cargo to the autophagic machinery. Damaged mitochondria are engulfed by phagophores, which mature into autophagosomes and fuse with lysosomes to autolysosomes, which eventually degrade their content.

autophagy to dispose of dysfunctional mitochondria. When CCCP (carbonyl cyanide 3-chlorophenylhydrazone), an uncoupling agent that dissipates the mitochondrial membrane potential, is added to HeLa cells that do not express endogenous parkin, overexpressed parkin is recruited to mitochondria within 1 h, and mitochondria are cleared from parkin-expressing cells upon prolonged exposure to CCCP. As outlined above, dissipation of the mitochondrial membrane potential by CCCP leads to the accumulation of full-length PINK1 at the outer mitochondrial membrane, which is essential for the mitochondrial translocation of parkin (Figure 2; Geisler *et al*, 2010a; Narendra *et al*, 2010b; Vives-Bauza *et al*, 2010; Seibler *et al*, 2011). Strikingly, the presence of membrane-localized PINK1 is sufficient to recruit parkin, since PINK1 targeted to peroxisomes or lysosomes recruits and activates parkin on the respective organelles (Lazarou *et al*, 2012). In an effort to elucidate the mechanism of parkin-induced mitophagy, several cofactors of this pathway have been identified. Selective autophagy requires specific labelling of the substrates destined for degradation, such as ubiquitination, and subsequent binding of adaptor proteins to recruit the autophagic machinery to the tagged cargo (reviewed in Kirkin *et al*, 2009). The signalling adaptor protein p62 (also termed as SQSTM1, sequestosome-1), which links ubiquitinated cargo to the autophagic machinery by binding to both ubiquitin and LC3, has been described as an essential factor for parkin-induced mitophagy (Ding *et al*, 2010; Geisler *et al*, 2010a; Lee *et al*, 2010b). However, two studies reported that only perinuclear clustering of mitochondria, but not mitophagy was

impaired in fibroblasts from p62 KO mice (Narendra *et al*, 2010c; Okatsu *et al*, 2010). The ubiquitin-binding deacetylase HDAC6 has also been implicated in parkin-mediated mitophagy by promoting autophagosome-lysosome fusion (Lee *et al*, 2010b). Ambral1 (activating molecule in Beclin-regulated autophagy) was recently identified as a parkin-interacting protein that promotes autophagic clearance of mitochondria by activating class III PI3K, which is essential for the formation of phagophores (Van Humbeeck *et al*, 2011).

Is parkin-mediated ubiquitination required for mitophagy and which target(s) and mode(s) of ubiquitination are implicated in this process? An increase in ubiquitinated proteins has indeed been detected at mitochondria upon CCCP treatment in parkin-expressing cells but not in cells lacking functional parkin (Geisler *et al*, 2010a; Lee *et al*, 2010b; Matsuda *et al*, 2010; Okatsu *et al*, 2010; Chan *et al*, 2011). A quantitative proteomic approach revealed a significant increase in both Lys48- and Lys63-linked polyubiquitination at mitochondria of CCCP-treated HeLa cells overexpressing parkin (Chan *et al*, 2011). Mitochondrial proteins most severely reduced in these cells included the fusion proteins Mfn1 and Mfn2, the mitochondrial transport proteins Miro1 and Miro2, and the import receptor subunit TOM70 (Chan *et al*, 2011). Removal of Mfn1/2 may facilitate the sequestration and clearance of mitochondria by increasing mitochondrial fission, which precedes mitophagy (Twig *et al*, 2008; Tanaka *et al*, 2010). Degradation of Miro1 and Miro2 blocks mitochondrial transport and thus favours clustering of damaged mitochondria (Wang *et al*, 2011d; Liu *et al*, 2012). Mfn2 has been shown to be directly involved in mitochondrial transport by interacting with Miro1/2 and

Milton (Misko *et al*, 2010), thus by decreasing Mfn1/2 and Miro1/2 protein levels parkin can affect both mitochondrial dynamics and transport. Notably, proteasomal degradation of outer mitochondrial membrane proteins seems to be a prerequisite of parkin-dependent mitophagy, as inhibition of the proteasome abrogates mitophagy (Tanaka *et al*, 2010; Chan *et al*, 2011; Yoshii *et al*, 2011). However, degradative ubiquitination of Mfn1 and Mfn2 (Tanaka *et al*, 2010) or non-degradative ubiquitination of VDAC1 (Geisler *et al*, 2010a) is not essential for parkin-induced mitophagy, since this pathway is not impaired in fibroblasts from Mfn1/2 or VDAC1/3 KO mice, indicating that either the essential substrate(s) for parkin-mediated ubiquitination has yet to be identified, or rather widespread ubiquitination of mitochondrial proteins facilitates mitophagy (Narendra *et al*, 2010a; Tanaka *et al*, 2010; Chan *et al*, 2011). In conclusion, remodelling of the outer mitochondrial membrane by ubiquitin in response to CCCP treatment serves at least two functions: proteasomal degradation of mitochondrial proteins and attracting ubiquitin-binding proteins that recruit the autophagic machinery. Whether PINK1 and parkin interact directly, and if PINK1 phosphorylates parkin and/or parkin ubiquitinates PINK1 is a controversial issue. Some studies provided evidence for such a scenario, others not (Moore, 2006; Kim *et al*, 2008; Shiba *et al*, 2009; Um *et al*, 2009; Sha *et al*, 2010; Vives-Bauza *et al*, 2010; Lazarou *et al*, 2012).

#### **The pathophysiological relevance of mitophagy in PD**

In favour of a relevant role of mitophagy in the pathogenesis of PD, pathogenic mutations in both parkin and PINK1 compromise distinct steps in the mitophagic pathway (Geisler *et al*, 2010a, b; Kawajiri *et al*, 2010; Lee *et al*, 2010b; Matsuda *et al*, 2010; Narendra *et al*, 2010b, c; Okatsu *et al*, 2010; Vives-Bauza *et al*, 2010; Chan *et al*, 2011; Seibler *et al*, 2011). However, most of the studies on PINK1/parkin-induced mitophagy used the protonophore CCCP or the ionophore valinomycin to induce mitophagy in PINK1/parkin-overexpressing tumour cells lines or mouse embryonic fibroblasts. Thus, the major critical issues are whether this phenomenon occurs under pathophysiological stress conditions with endogenous expression levels of parkin and PINK1 and whether an impairment of mitophagy contributes to neuronal dysfunction and cell death in PD. So far, studies addressing these important questions did not provide conclusive and coherent answers. It has been reported that parkin is recruited to mitochondria in cultured cells overexpressing a catalytically inactive form of the mitochondrial helicase Twinkle, suggesting that parkin can target mitochondria with mtDNA deletions (Suen *et al*, 2010). In the same study, it was observed that long-term overexpression of parkin in heteroplasmic cybrid cells induces selective elimination of mitochondria with mutations in the *cytochrome c oxidase subunit I* gene (Suen *et al*, 2010). To test for parkin-induced mitophagy *in vivo*, Larsson and coworkers made use of a mouse model of progressive parkinsonism caused by DA neuron-specific loss of the mitochondrial transcription factor TFAM, which is essential for mtDNA maintenance and transcription initiation at mtDNA promoters (Ekstrand *et al*, 2007). These mice display severe respiratory chain deficiency and accumulation of mitochondrial aggregates, however, no

evidence was found for mitochondrial translocation of parkin or parkin-induced mitophagy (Sterky *et al*, 2011).

Another crucial aspect concerning the mitophagy pathway seem to be the bioenergetic status of the cells analysed. Berman and coworkers observed that after CCCP treatment parkin efficiently translocates to uncoupled mitochondria in tumour cells, but not in rat primary cortical or striatal/mid-brain neurons (Van Laar *et al*, 2011). Typically, tumour-derived cultured cells, such as HeLa cells, do not depend on oxidative phosphorylation, as they generate ATP preferentially by aerobic glycolysis, which can provide a biosynthetic advantage during cell proliferation (reviewed in Vander Heiden *et al*, 2009 and Cairns *et al*, 2011). Remarkably, when HeLa cells are forced into dependence on oxidative phosphorylation by culturing in glucose-free galactose cell culture medium, parkin no longer translocates to uncoupled mitochondria (Van Laar *et al*, 2011). In contrast to the latter study, accumulation of overexpressed YFP-parkin at axonal mitochondria was recently observed in rat hippocampal neurons treated with the complex III inhibitor antimycin A (Wang *et al*, 2011d). As already mentioned above, Schwarz and coworkers could demonstrate that the mitochondrial recruitment of parkin decreases mitochondrial motility as a consequence of parkin-dependent proteasomal degradation of Miro. This mitochondrial arrest may represent an early step of mitophagy, however, whether arrested mitochondria in this model are indeed eliminated by the mitophagy pathway has not been demonstrated. As a conclusion, in neurons that depend on mitochondrial respiration for energy production induction of mitophagy may be more restrictive and possibly regulated in a more complex manner in comparison with tumour cells.

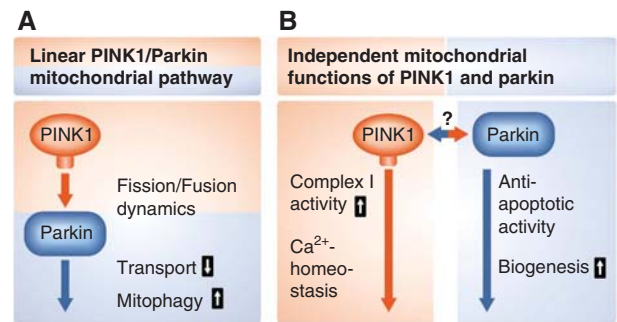
#### **Parkin, PINK1, and mitochondrial dynamics: an impact on fusion or fission?**

Although mitochondria appear as solitary, static, bean-shaped double-membrane units in electron micrographs, life-cell imaging revealed that mitochondria are highly dynamic organelles which can change their shape, size, and subcellular localization. These dynamic processes are regulated by mitochondrial fusion, fission, and transport along cytoskeletal tracks. Depending on whether fusion or fission predominates, mitochondria form highly interconnected tubular networks or fragmented, rod-like/spherical structures. The last decade has witnessed remarkable progress in the identification and characterization of the basic mechanisms that govern mitochondrial fusion and fission. The core machinery mediating mitochondrial fusion and fission consists of dynamin-like GTPases, which are tightly regulated at various levels (reviewed in Detmer and Chan, 2007; Westermann, 2010) (Soubannier and McBride, 2009; Campello and Scorrano, 2010; and Oettinghaus *et al*, 2012). Mitofusins (Mfn1 and Mfn2) induce outer mitochondrial membrane fusion, whereas OPA1 mediates fusion of the inner membrane. Mitochondrial fission is dependent on the cytosolic GTPase Drp1, which is recruited to prospective fission sites upon activation, and involves additional fission factors, such as Mff, Mief1, and Fis1. In addition to characterizing the fusion and fission machinery at a molecular level, the impact of mitochondrial dynamics on key cellular processes, such as bioenergetics, apoptosis, autophagy, quality control and stress response pathways is



still being explored. Beyond any doubt, dysregulation of mitochondrial dynamics can cause or at least contribute to the pathogenesis of various neurological disorders (reviewed in Chan, 2006; Knott *et al*, 2008; Oettinghaus *et al*, 2012; and Pils and Winklhofer, 2012). Notably, germline mutations in the *Mfn2* gene are responsible for Charcot-Marie-Tooth type 2A, a peripheral neuropathy affecting both sensory and motor neurons (Zuchner *et al*, 2004), whereas mutations in the *OPA1* gene cause autosomal dominant optic atrophy (Alexander *et al*, 2000; Delettre *et al*, 2000).

Alterations in mitochondrial dynamics have been documented in several genetic PD models. Specifically, in cultured mammalian cells and primary neurons the acute loss of parkin or PINK1 function causes Drp1-dependent mitochondrial fragmentation along with a decrease in the mitochondrial membrane potential and ATP production (Exner *et al*, 2007; Dagda *et al*, 2009; Lutz *et al*, 2009; Sandebring *et al*, 2009; Weihofen *et al*, 2009; Cui *et al*, 2010; Wang *et al*, 2011a). This phenotype can be rescued by increasing mitochondrial fusion (enhanced expression of *Mfn2* or *OPA1*) or decreasing fission (enhanced expression of dominant negative Drp1) (Dagda *et al*, 2009; Lutz *et al*, 2009; Sandebring *et al*, 2009; Cui *et al*, 2010). In contrast to mammalian models, the phenotype of parkin- or PINK1-deficient flies can be reverted by increasing mitochondrial fission or decreasing fusion (Deng *et al*, 2008a; Poole *et al*, 2008; Yang *et al*, 2008). From the observations in the fly model, it was concluded that parkin and PINK1 promote mitochondrial fission. However, in mammalian cells the increased expression of parkin or PINK1 efficiently protects the mitochondrial network from fragmentation induced by cellular stress or Drp1 overexpression (Lutz *et al*, 2009; Sandebring *et al*, 2009; Bouman *et al*, 2011). A possible explanation for the obvious discrepancies are differences between mammals and *Drosophila* to cope with the loss of parkin or PINK1 function. Of note, mitochondrial fragmentation is an immediate response to parkin or PINK1 silencing and is more pronounced after a transient knockdown. Thus, it appears that compensatory strategies can be induced to prevent irreversible cellular damage in parkin- or PINK1-deficient cells. In line with this scenario, we observed that mitochondrial fragmentation occurs in cultured *Drosophila* S2 cells early upon parkin or PINK1 silencing, but is rapidly followed by hyperfusion (Lutz *et al*, 2009). Mitochondrial fusion may be activated in an attempt to dilute dysfunctional mitochondria and to achieve complementation with functional mitochondria. However, this mode of compensation does not promote elimination of damaged mitochondria, explaining why postmitotic cells in tissues with high energy demands are affected in parkin- or PINK1-deficient flies. We did not observe a hyperfusion phenotype upon knocking down parkin or PINK1 expression in mammalian cells; thus, the compensatory mechanisms seem to be different to those in fly cells. In this context, it is important to note that a stable loss of parkin or PINK1 in mammalian cells can obviously be compensated under basal conditions, consistent with the fact that parkin- or PINK1-deficient mice do not show major alterations in mitochondrial morphology. However, parkin- or PINK1-deficient cells including patients' fibroblasts are much more vulnerable to stress-induced mitochondrial fragmentation, suggesting that the compensatory strategies are not



**Figure 3** Mitochondrial functions of PINK1 and parkin. (A) A linear pathway with PINK1 acting upstream of parkin is implicated in mediating degradation of damaged mitochondria via mitophagy. (B) PINK1 and parkin also affect mitochondrial functions via parallel pathways, possibly by acting on mitochondria independently from each other.

sufficient to prevent mitochondrial damage under cellular stress (Hoepken *et al*, 2007; Mortiboys *et al*, 2008; Grunewald *et al*, 2010).

The effects of PINK1 and parkin on mitochondrial dynamics may be secondary to alterations in mitochondrial bioenergetics and/or mitochondrial depolarization (Morais *et al*, 2009; Sandebring *et al*, 2009). In line with this notion, many phenotypes of PINK1-deficient flies, such as male sterility, flight muscle degeneration, and synaptic transmission defects, are rescued by Ndi1p, a yeast NADH dehydrogenase that can bypass electron transport in complex I in mammalian cells. Complex I deficiency in PINK1 mutant flies is not rescued by increasing mitochondrial fission, indicating that PINK1-associated complex I dysfunction acts at least partly upstream of mitochondrial remodelling (Vilain *et al*, 2012). Interestingly, the loss of parkin function in flies does not compromise complex I activity and Ndi1p has no effect on the phenotype of parkin-deficient flies, although parkin can rescue the PINK1 phenotype (Vilain *et al*, 2012). These findings add evidence to the idea that in addition to a simple linear PINK1/parkin pathway, there may exist parallel pathways and independent functions of parkin and PINK1 (Figure 3). Indeed, parkin can prevent cytochrome c release induced by pro-apoptotic BH3 domains, whereas PINK1 does not have this activity (Berger *et al*, 2009).

Parkin has been reported to directly influence the mitochondrial fusion and fission machinery, which makes it even more difficult to decipher the net effect of parkin on mitochondrial dynamics. In the context of parkin-induced mitophagy, it has been observed that parkin mediates ubiquitination and proteasomal degradation of Mfn1 and Mfn2 in response to mitochondrial uncoupling (Poole *et al*, 2008; Gegg *et al*, 2010; Tanaka *et al*, 2010; Ziviani *et al*, 2010; Chan *et al*, 2011; Glauser *et al*, 2011). In contrast to these studies, parkin has been found to induce the proteasomal degradation of the fission-promoting proteins Drp1 or Fis1 (Cui *et al*, 2010; Wang *et al*, 2011a). How can these discrepant observations be explained? Conceptually, parkin may modulate mitochondrial dynamics in a context-specific and possibly cell type-specific manner. An attractive model would be that under moderate stress conditions with only minor mitochondrial damage parkin prevents mitochondrial fragmentation and favours mitochondrial fusion with the remaining healthy mitochondrial population, allowing

functional complementation. However, when mitochondria are irreversibly damaged in response to severe stress, parkin may promote mitochondrial fission, which facilitates sequestration and elimination of damaged mitochondria via mitophagy.

#### **DJ-1: an ROS-sensitive and ROS-protective protein**

Loss-of-function mutations in the *DJ-1* gene are a rare cause of autosomal recessive parkinsonism (Bonifati *et al*, 2003). DJ-1, a ubiquitously expressed protein of 189 amino acids, belongs to an evolutionarily conserved superfamily and shares structural similarities to the stress-inducible *E. coli* chaperone Hsp31 (Lee *et al*, 2003; Lucas and Marin, 2007). DJ-1 forms dimers with extensive contacts covering 35% of the molecular surface of each molecule (Wilson *et al*, 2003). A wide range of obviously unrelated DJ-1 functional activities have been reported, however, there is consensus on the fact that DJ-1 is responsive to and protective against oxidative stress (reviewed in Kahle *et al*, 2009 and Cookson, 2010a). Oxygen species react with the sulphhydryl group of a conserved cysteine residue at position 106 to form sulphinic acid, giving rise to a shift in the isoelectric point towards more acidic values (Mitsumoto *et al*, 2001; Canet-Aviles *et al*, 2004). Importantly, this cysteine residue is essential for the stress-protective activity of DJ-1 (Canet-Aviles *et al*, 2004; Taira *et al*, 2004; Meulener *et al*, 2006; Blackinton *et al*, 2009).

DJ-1 KO mice do not display nigrostriatal degeneration, however, they are impaired in scavenging mitochondrial H<sub>2</sub>O<sub>2</sub>, which has been attributed to the function of DJ-1 as an atypical peroxiredoxin-like peroxidase (Andres-Mateos *et al*, 2007). DJ-1 is mostly found in the cytoplasm, but oxidative stress can induce its translocation to the outer mitochondrial membrane (Canet-Aviles *et al*, 2004; Blackinton *et al*, 2009; Junn *et al*, 2009). Moreover, cell fractionation and immunogold electron microscopy revealed that endogenous Drp1 can be detected in the mitochondrial matrix and intermembrane space (Zhang *et al*, 2005). It has been suggested that parkin, PINK1, and DJ-1 form a complex with E3 ligase activity to degrade misfolded proteins (Xiong *et al*, 2009); however, size exclusion chromatography did not support such a scenario, as parkin, PINK1, and DJ-1 were separated into distinct complexes (Thomas *et al*, 2011). Concerning the maintenance of mitochondrial integrity, DJ-1 shares some features with PINK1 and parkin. Similarly to PINK1 and parkin, DJ-1 increases resistance against mitochondrial toxins and decreases mitochondrial fragmentation in response to mitochondrial damage (Canet-Aviles *et al*, 2004; Kim *et al*, 2005; Zhang *et al*, 2005; Irrcher *et al*, 2010; Krebiehl *et al*, 2010; Thomas *et al*, 2011). DJ-1 deficiency in cultured cells, primary neurons and patients' fibroblasts or lymphoblasts causes mitochondrial fragmentation and depolarization, which can be reverted by parkin or PINK1, but DJ-1 cannot rescue the PINK1- or parkin-deficient phenotype (Exner *et al*, 2007; Irrcher *et al*, 2010; Krebiehl *et al*, 2010; Thomas *et al*, 2011). Mitochondrial alterations induced by DJ-1 loss of function can be prevented by antioxidants, indicating that increased levels of oxidative stress account for the mitochondrial phenotypes (Irrcher *et al*, 2010; Thomas *et al*, 2011). Indeed, brain or skeletal muscle mitochondria from DJ-1 KO mice display increased formation of ROS (Andres-Mateos *et al*, 2007; Irrcher *et al*, 2010).

Notably, DJ-1 maintains its protective activity in the absence of PINK1, thus DJ-1 appears to work rather independently from PINK1 and parkin in a parallel pathway (Thomas *et al*, 2011; Haque *et al*, 2012).

#### **$\alpha$ -Synuclein: a protein of structural plasticity that links sporadic and genetic PD**

$\alpha$ -Synuclein is of particular relevance to the etiopathogenesis of PD. The identification of mutations in the gene encoding  $\alpha$ -synuclein (*SNCA*) as a cause of familial PD launched the 'molecular era' of PD research (Polymeropoulos *et al*, 1997). Shortly after this discovery,  $\alpha$ -synuclein was found to be a major component of Lewy bodies (Spillantini *et al*, 1997). So far, three missense mutations in the  $\alpha$ -synuclein gene and genomic duplications or triplications have been identified in patients with autosomal dominant parkinsonism (Polymeropoulos *et al*, 1997; Kruger *et al*, 1998; Singleton *et al*, 2003; Chartier-Harlin *et al*, 2004; Farrer *et al*, 2004; Ibanez *et al*, 2004; Zarranz *et al*, 2004). In addition, genome-wide association studies revealed that several single-nucleotide polymorphisms in the *SNCA* gene are strongly associated with PD risk (Satake *et al*, 2009; Simon-Sanchez *et al*, 2009; Edwards *et al*, 2010; Hamza *et al*, 2010; International Parkinson Disease Genomics Consortium *et al*, 2011).

$\alpha$ -Synuclein is a 140 amino-acid protein that is abundantly expressed in the central nervous system of vertebrates. It belongs to the synuclein family, which also includes  $\beta$ - and  $\gamma$ -synuclein. At the N-terminal region it harbours 7 imperfect repeats of 11 amino acids containing a KTKGEV motif which mediate formation of amphipathic  $\alpha$ -helices upon membrane binding (Davidson *et al*, 1998; Eliezer *et al*, 2001). The central NAC (non-amyloid  $\beta$  component of Alzheimer's disease amyloid plaques) domain is responsible for the aggregation propensity of  $\alpha$ -synuclein (Giasson *et al*, 2001). The acidic C-terminal domain contains several phosphorylation sites and influences the aggregation behaviour of  $\alpha$ -synuclein (Okochi *et al*, 2000; Fujiwara *et al*, 2002; Tofaris *et al*, 2006).  $\alpha$ -Synuclein is an intrinsically disordered protein in aqueous solution, however, depending on the environment it displays considerable structural flexibility, including membrane-bound  $\alpha$ -helical structures, oligomers, protofibrils, and amyloid fibrils, characterized by a cross- $\beta$ -sheet structure (reviewed in Volles and Lansbury, 2003; Beyer, 2007; and Uversky, 2010). It has recently been reported that endogenous  $\alpha$ -synuclein isolated from cultured cells and red blood cells under non-denaturing conditions adopts a helically folded tetrameric structure with enhanced lipid-binding capacity and markedly reduced aggregation propensity in comparison with  $\alpha$ -synuclein monomers, suggesting that  $\alpha$ -synuclein tetramers are the physiological species (Bartels *et al*, 2011). Formation of stable tetramers with helical secondary structure was also described for recombinantly expressed human  $\alpha$ -synuclein in the absence of lipid bilayers or micelles (Wang *et al*, 2011c). However, these findings have been disputed in a joint publication of six different groups (Fauvet *et al*, 2012). Using  $\alpha$ -synuclein standards of well-characterized conformational and oligomeric states and applying various methods such as native and denaturing gel electrophoresis techniques, size exclusion chromatography, and an oligomer-specific ELISA, the authors of this study demonstrated that

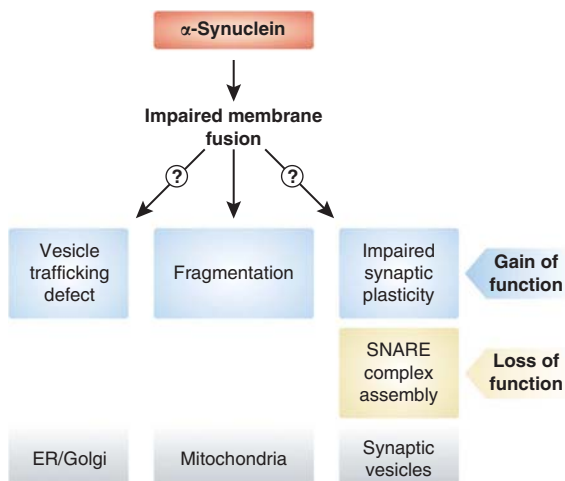
native  $\alpha$ -synuclein from human, rat, and mouse brains, several mammalian cell lines, and human red blood cells exhibit identical migration patterns and apparent molecular weight as unfolded monomeric recombinant  $\alpha$ -synuclein. Thus, the results of the latter study question the existence of physiological  $\alpha$ -synuclein tetramers, a critical issue for the development of  $\alpha$ -synuclein-specific therapeutic strategies, which mostly aim at preventing  $\alpha$ -synuclein oligomerization.

It has now widely been accepted that not the final fibrillar  $\alpha$ -synuclein aggregates but rather oligomeric prefibrillar folding intermediates are the major toxic species (reviewed in Lansbury and Lashuel, 2006; Cookson and van der Brug, 2008; and Winklhofer *et al*, 2008). However, the mechanisms of  $\alpha$ -synuclein-induced toxicity are still under discussion, hampered by the difficulties in discriminating primary and specific effects from secondary and/or unspecific effects caused by overloading cells with a misfolding-prone protein. Upon overexpression of wild-type or mutant  $\alpha$ -synuclein in cellular and animal models alterations in various cellular processes have been reported, including proteasomal and lysosomal degradation, autophagy, and vesicular transport (reviewed in Cookson, 2009; Waxman and Giasson, 2009; Sulzer, 2010; Venda *et al*, 2010; and Vekrellis *et al*, 2011). The physiological function of  $\alpha$ -synuclein has also largely remained elusive. Its enrichment in presynaptic terminals and its binding to vesicles suggests a role in vesicle dynamics and synaptic plasticity (reviewed in Auluck *et al*, 2010). A common theme emerging from studies on the function and dysfunction of  $\alpha$ -synuclein is that it appears to affect membrane fusion events (Figure 4). Mice lacking  $\alpha$ -synuclein were reported to show increased dopamine release upon stimulation, pointing to a role of  $\alpha$ -synuclein in negatively regulating dopamine neurotransmission (Abeliovich *et al*, 2000; Yavich *et al*, 2004). Similarly, in  $\alpha$ -,  $\beta$ -, and  $\gamma$ -synuclein triple KO mice, an elevated evoked release of dopamine in the nigrostriatal system was observed (Anwar *et al*, 2011). When  $\alpha$ -synuclein is overexpressed in PC12 cells evoked catecholamine release is inhibited

and docked vesicles accumulate at the plasma membrane (Larsen *et al*, 2006). In primary hippocampal neurons, mild overexpression of  $\alpha$ -synuclein in the range of gene duplication or triplication decreases neurotransmitter release, probably by reducing the size of the synaptic vesicle recycling pool (Nemani *et al*, 2010). Similarly, virus-mediated expression of  $\alpha$ -synuclein in the SN of adult rats causes a reduction in striatal dopamine release (Lundblad *et al*, 2012).  $\alpha$ -Synuclein has been reported to cooperate with presynaptic cysteine-string protein- $\alpha$  (CSP $\alpha$ ) to maintain neuronal integrity (Chandra *et al*, 2005). CSP $\alpha$  is a co-chaperone of the Hsp40 family involved in the assembly of SNARE complexes, the core components of a conserved machinery mediating synaptic vesicle membrane fusion during exocytosis (Sharma *et al*, 2011). Strikingly, neurodegeneration observed in CSP $\alpha$ -deficient mice could be rescued by transgenic expression of  $\alpha$ -synuclein, whereas deletion of endogenous  $\alpha$ -synuclein enhanced the neurodegenerative phenotype (Chandra *et al*, 2005). Concerning the mechanism of this functional interaction it has been demonstrated that  $\alpha$ -synuclein directly promotes the assembly of SNARE complexes by simultaneous binding to phospholipids via its N-terminal region and to synaptobrevin-2 via its C-terminal domain (Burre *et al*, 2010; Figure 4).

*In vitro*,  $\alpha$ -synuclein preferentially binds to small vesicles containing acidic phospholipids and induces ordering of phospholipids at sites of packing defects in the bilayer caused by curvature stress (Davidson *et al*, 1998; Kamp and Beyer, 2006). Local defects in a membrane are required for the formation of a fusion stalk, thus, annealing of  $\alpha$ -synuclein to those defects should prevent premature membrane fusion. Indeed, fusion of small unilamellar vesicles is inhibited in the presence of recombinant  $\alpha$ -synuclein, and overexpression of  $\alpha$ -synuclein in cultured cells and *C. elegans* reduces the fusion rate of mitochondria (Kamp *et al*, 2010). Notably, mitochondrial fragmentation induced by overexpression of  $\alpha$ -synuclein can be prevented by PINK1, parkin, or DJ-1 but not by their pathogenic mutants (Kamp *et al*, 2010). Mitochondrial fragmentation upon increased  $\alpha$ -synuclein expression was also observed in another study using cultured cells and primary neurons (Nakamura *et al*, 2011). In this study, it was reported that  $\alpha$ -synuclein causes an increase in Drp1-independent mitochondrial fission, which is not accompanied by alterations in the morphology of other cellular organelles. Interestingly,  $\alpha$ -synuclein-induced mitochondrial fragmentation is not a consequence of mitochondrial depolarization or respiration deficits, it occurs without overt toxicity and is independent of proteins of the mitochondrial fusion and fission machinery (Kamp *et al*, 2010; Nakamura *et al*, 2011). In conclusion, both the increased expression of  $\alpha$ -synuclein and the loss of  $\alpha$ -synuclein function may impact on membrane fusion, explaining the observed effects of  $\alpha$ -synuclein on neurotransmitter release. Similarly, the ER-to-Golgi vesicle trafficking defect observed in several models of  $\alpha$ -synuclein overexpression could be attributed to impaired fusion of vesicles at the Golgi membrane (Gitler *et al*, 2008; Figure 4).

There is evidence for a preferential binding of  $\alpha$ -synuclein to mitochondria (Nakamura *et al*, 2008), and localization of  $\alpha$ -synuclein at mitochondria or even within mitochondria has been reported (Li *et al*, 2007; Cole *et al*, 2008; Devi *et al*, 2008; Parihar *et al*, 2008; Shavali *et al*, 2008; Zhang *et al*, 2008;



**Figure 4** Physiological and pathophysiological functions of  $\alpha$ -synuclein on membrane dynamics. Effects of  $\alpha$ -synuclein on membrane fusion events can explain why both an increase of  $\alpha$ -synuclein expression and a loss of  $\alpha$ -synuclein have adverse effects. Overexpression of  $\alpha$ -synuclein causes ER/Golgi vesicle trafficking defects and mitochondrial fragmentation, whereas  $\alpha$ -synuclein deficiency affects SNARE complex assembly.

Kamp *et al*, 2010; Nakamura *et al*, 2011). In various models of  $\alpha$ -synuclein overexpression structural alterations of mitochondria, increased oxidative stress, and/or bioenergetic defects have been observed (Hsu *et al*, 2000; Martin *et al*, 2006; Stichel *et al*, 2007; Devi *et al*, 2008; Parihar *et al*, 2008; Liu *et al*, 2009; Chinta *et al*, 2010; Loeb *et al*, 2010; Su *et al*, 2010; Choubey *et al*, 2011).  $\alpha$ -Synuclein KO mice are resistant or less sensitive to mitochondrial toxins (Dauer *et al*, 2002; Schluter *et al*, 2003; Klivenyi *et al*, 2006) and were reported to have qualitative and quantitative lipid abnormalities with a decrease in cardiolipin content (Ellis *et al*, 2005). *Vice versa*,  $\alpha$ -synuclein-overexpressing mice are more vulnerable to mitochondrial toxins (Orth *et al*, 2003; Song *et al*, 2004; Shavali *et al*, 2008), albeit this is not a consistent finding (Rathke-Hartlieb *et al*, 2001; Dong *et al*, 2002).  $\alpha$ -Synuclein toxicity in cellular models and in *Drosophila* is mitigated by the mitochondrial chaperone TRAP1, supporting the notion that  $\alpha$ -synuclein affects mitochondrial function (Butler *et al*, 2012).  $\alpha$ -Synuclein has also been reported to increase autophagy and mitophagy in primary cortical neurons, and depletion of parkin showed beneficial effects on neuronal survival, which led the authors to conclude that inhibition of excess mitophagy is protective in this model (Choubey *et al*, 2011). This observation would be in line with a double transgenic mouse model in which the absence of parkin delayed the neurodegenerative phenotype caused by A30P  $\alpha$ -synuclein overexpression (Fournier *et al*, 2009). It should be mentioned that  $\alpha$ -synuclein has also been found to impair autophagy (Winslow *et al*, 2010). The effect of parkin on  $\alpha$ -synuclein-induced pathology is controversial as well: in various models, a protective effect of parkin on  $\alpha$ -synuclein-induced alterations was observed (Petrucci *et al*, 2002; Yang *et al*, 2003; Lo Bianco *et al*, 2004; Yasuda *et al*, 2007; Khandelwal *et al*, 2010). Furthermore, in another mouse model with a combined transgenic expression of A30P/A53T  $\alpha$ -synuclein and a targeted deletion of parkin, mitochondrial pathology was more prominent in comparison with single transgenic mice (Stichel *et al*, 2007).

A striking feature of  $\alpha$ -synuclein is its transmissibility to neighbouring cells (reviewed in Brundin *et al*, 2010; Frost and Diamond, 2010; Steiner *et al*, 2011; and Hansen and Li, 2012). The first evidence for this phenomenon came from studies in PD patients that received neural grafts derived from fetal midbrain tissue. At autopsy between 10 and 16 years after transplantation, Lewy body pathology was not only observed in the host striatal neurons but also in the grafted neurons of some PD patients (Kordower *et al*, 2008a, b; Li *et al*, 2008, 2010; Mendez *et al*, 2008). Studies in mice have essentially supported the phenomenon of intercellular  $\alpha$ -synuclein transfer. Wild-type neuronal stem cells or embryonic neurons grafted into the brain of  $\alpha$ -synuclein-overexpressing transgenic mice can take up host  $\alpha$ -synuclein and develop inclusions (Desplats *et al*, 2009; Hansen *et al*, 2011). How can  $\alpha$ -synuclein spread from cell to cell? Obviously,  $\alpha$ -synuclein is secreted from cultured cells by exocytotic vesicles (Lee *et al*, 2005; Jang *et al*, 2010) or via exosomes, which are endosome-derived vesicles secreted during fusion of multivesicular bodies with the plasma membrane (Emmanouilidou *et al*, 2010; Alvarez-Erviti *et al*, 2011). The mechanism by which  $\alpha$ -synuclein is taken up by recipient cells is largely unknown. Passive diffusion, endocytosis, and exosome-mediated uptake have been observed, and it is highly likely that the mode of

cell entry depends on the type of  $\alpha$ -synuclein species to be taken up (Sung *et al*, 2001; Desplats *et al*, 2009; Park *et al*, 2009; Emmanouilidou *et al*, 2010; Hansen *et al*, 2011). Internalized  $\alpha$ -synuclein fibrils generated from recombinant  $\alpha$ -synuclein promote aggregation of endogenous  $\alpha$ -synuclein in mouse primary hippocampal neurons by a seeding activity and cause synaptic dysfunction and ultimately cell death (Volpicelli-Daley *et al*, 2011). Remarkably, in young asymptomatic A53T  $\alpha$ -synuclein transgenic mice, intracerebral injection of brain homogenates from older symptomatic transgenic mice accelerates  $\alpha$ -synuclein aggregation and neuronal degeneration, even at regions far beyond injection sites, a phenomenon also observed after injection of synthetic  $\alpha$ -synuclein fibrils (Luk *et al*, 2012). The propagation of misfolded protein species by similar mechanisms has also been observed for other proteins associated with neurodegenerative disease, like tau, A $\beta$  peptide and huntingtin, and thus may reflect a unifying mechanism of disease progression.

### **LRRK2: a GTPase-regulated kinase or a kinase-regulated GTPase?**

Mutations in the gene encoding LRRK2 cause autosomal dominant parkinsonism and are the most common cause of familial PD (Paisan-Ruiz *et al*, 2004; Zimprich *et al*, 2004). Moreover, genome-wide association studies identified genetic variants in the *LRRK2* gene as risk factors for sporadic PD (Satake *et al*, 2009; Simon-Sanchez *et al*, 2009; Hamza *et al*, 2011; International Parkinson Disease Genomics Consortium *et al*, 2011). LRRK2 is a 2257 amino-acid protein that belongs to the ROCO protein family, characterized by an Roc (Ras of complex proteins) domain with GTPase activity and a COR (C-terminal of Roc) domain. A kinase domain with sequence similarities to RIPKs (receptor-interacting serine/threonine protein kinases) and MLKs (mixed lineage kinases), a subclass of the MAPKKK (mitogen-activated protein kinase kinase kinases) family, is located C-terminal to the COR domain. In addition, LRRK2 harbours several protein-protein interaction domains, such as a WD40 domain, leucine-rich repeats (LRRs), and an ankyrin domain. To date, six missense mutations have been demonstrated to segregate with familial PD, which cluster to the Roc, COR, and kinase domain.

The modular structure of LRRK2 suggests a role as a signalling protein, which can act as a kinase, GTPase, and/or scaffolding protein. LRRK2 forms dimers, and dimer formation appears to be essential for full catalytic activity (Deng *et al*, 2008b; Gotthardt *et al*, 2008; Greggio *et al*, 2008; Sen *et al*, 2009). LRRK2 shows a weak kinase activity *in vitro* mediating autophosphorylation and phosphorylation of generic substrates (i.e., myelin basic protein) or putative substrates, such as members of the ERM protein family (ezrin/radixin/moesin) that anchor the actin cytoskeleton to the plasma membrane, kinases of the MAP and Ste20 serine/threonine kinase families, 4E-BP, the eukaryotic translation initiation factor 4E-binding protein, or the forkhead box transcription factor FoxO1 (West *et al*, 2005; Gloeckner *et al*, 2006, 2009; Jaleel *et al*, 2007; Imai *et al*, 2008; Parisiadou *et al*, 2009; Kanao *et al*, 2010; Zach *et al*, 2010). It has been reported that the kinase activity is regulated by the GTPase activity, however, the Roc domain can be phosphorylated by the kinase domain, suggesting the

possibility that not the kinase but the GTPase activity is the main output of LRRK2 and/or that both activities are regulated in a reciprocal manner (Greggio *et al*, 2008, 2009; Kamikawaji *et al*, 2009; Gloeckner *et al*, 2010; Liu *et al*, 2010; Webber *et al*, 2011). This hypothesis is in line with the recent identification of a GTPase-activating protein, ArfGAP1, which enhances the GTPase activity of LRRK2 but is also phosphorylated by LRRK2 (Stafa *et al*, 2012; Xiong *et al*, 2012).

The physiological and pathological functions of LRRK2 are still incompletely understood. It has been reported that pathogenic LRRK2 mutations increase kinase activity and/or decrease GTPase activity. Overexpression of pathogenic LRRK2 mutants in cultured cells, primary neurons or rodents causes cellular toxicity, which is dependent on the kinase activity (Greggio *et al*, 2006; Smith *et al*, 2006; West *et al*, 2007; Ho *et al*, 2009; Dusonchet *et al*, 2011). Indeed, inhibitors of LRRK2 kinase are protective in *in-vitro* and *in-vivo* models of LRRK2-induced neurodegeneration (Lee *et al*, 2010a; Liu *et al*, 2011a). From diverse cellular and animal models of LRRK2 loss and gain of function it emerged that LRRK2 can influence neurite outgrowth, cytoskeleton dynamics, vesicle trafficking, translational control, endocytosis, autophagy, mitochondrial function, MAPK and Wnt signalling, and extrinsic (TNF $\alpha$ /FasL) or intrinsic apoptosis pathways (reviewed in Cookson, 2010b; Berwick and Harvey, 2011; Daniels *et al*, 2011; and Tsika and Moore, 2012). Which of these pathways are relevant to the pathogenesis of PD requires further investigation. Notably, flies expressing the pathogenic G2019S LRRK2 mutant exhibit late-onset loss of DA neurons in selected clusters accompanied by locomotion deficits (Liu *et al*, 2008; Ng *et al*, 2009). In this fly LRRK2 model, coexpression of human parkin protects against DA neurodegeneration induced by ageing or rotenone treatment (Ng *et al*, 2009).

An interesting immunoregulatory function of LRRK2 was recently reported based on genome-wide association studies identifying *LRRK2* as a major susceptibility gene for inflammatory bowel disease (Barrett *et al*, 2008; Franke *et al*, 2010). LRRK2-deficient mice display an increased susceptibility to experimentally induced colitis (Liu *et al*, 2011b). LRRK2 which is expressed in macrophages, dendritic cells, and B lymphocytes can inhibit nuclear translocation of NFAT, a transcription factor regulating immune responses, by increasing its interaction with a cytoplasmic NFAT repressor (Gardet *et al*, 2010; Liu *et al*, 2011b). Notably, this activity of LRRK2 does not involve phosphorylation of NFAT.

So far, little is known about a possible impact of LRRK2 on mitochondria. Upon overexpression in cultured cells, about 10% of LRRK2 was found at the outer mitochondrial membrane (West *et al*, 2005). Mitochondrial localization was also shown for endogenous LRRK2 in mammalian brain tissue by confocal imaging, subcellular fractionation, and electron microscopy (Biskup *et al*, 2006). Mitochondrial pathology has been observed in aged G2019S LRRK2 transgenic mice (Ramonet *et al*, 2011), and the expression of this mutant aggravates mitochondrial alterations in inducible A53T  $\alpha$ -synuclein transgenic mice (Lin *et al*, 2009). However, a similar approach using double transgenic mice did not provide support for a pathophysiological interaction of LRRK2 and  $\alpha$ -synuclein (Daher *et al*, 2012). Skin fibroblasts derived from five patients carrying the G2019S mutation

show a decrease in mitochondrial membrane potential and total ATP production and a trend towards increased mitochondrial interconnectivity (Mortiboys *et al*, 2010). A recent study reported that overexpression of wild-type LRRK2 and pathogenic LRRK2 mutants in cultured cells and primary cortical neurons cause mitochondrial fragmentation by increasing mitochondrial recruitment of Drp1 (Wang *et al*, 2012). Notably, LRRK2-induced toxicity could be blocked by decreasing mitochondrial fission or increasing fusion. Further studies are needed to determine whether these mitochondrial effects of LRRK2 are direct or indirect and what the underlying mechanism might be.

## Controversies and unanswered questions

### *Why are SNc DA neurons particularly vulnerable?*

A key challenge in the neurodegeneration field has been to understand the selective vulnerability of neuronal subpopulations. SNc DA neurons are considered special in terms of oxidative stress management and calcium homeostasis. Sources of ROS in DA neurons are the enzymatic and non-enzymatic metabolism of cytoplasmic dopamine. Vesicular dopamine is protected from oxidation, thus, an increase in oxidation-prone cytoplasmic dopamine is toxic to neurons. VMAT2 is the vesicular monoamine transporter responsible for dopamine uptake into presynaptic vesicles, and dysfunction of VMAT, for example as a consequence of decreased mitochondrial ATP production, can induce nigrostriatal degeneration (Caudle *et al*, 2007). Moreover, the amount of iron, which can trigger ROS formation via the Fenton reaction, has been reported to be high in SNc DA neurons, whereas antioxidative components, such as reduced glutathione, are expressed at low levels (Kish *et al*, 1985; Chinta and Andersen, 2008). Oxidative stress may also arise from excitotoxicity and mitochondrial dysfunction, which can trigger a vicious circle. Excitotoxicity results from overstimulation of glutamate receptors and elicits a cascade of harmful events including calcium influx that can challenge the storage capacity of the ER and mitochondria. SNc DA neurons are vulnerable to excitotoxicity based on rich glutamatergic input from the subthalamic nucleus. A decrease in ATP production, for example as a consequence of mitochondrial dysfunction, can compromise the ATP-dependent regulation of glutamate receptors favouring their overstimulation.

Calcium toxicity has been suggested as another determinant of selective vulnerability. Adult ventrolateral SNc DA neurons engage L-type Ca<sub>v</sub>1.3 calcium channels for rhythmic pacemaking, in contrast to less vulnerable DA neurons of the ventral tegmental area which use sodium channels for pacemaking activity (Chan *et al*, 2007). Reliance on these L-type calcium channels increases with age and leads to sustained elevated cytoplasmic calcium levels, which may stimulate mitochondrial respiration and ROS production. An imbalance in calcium homeostasis can be enhanced by mitochondrial and ER stressors or genetic mutations in stress-protective genes, resulting in mitochondrial calcium overload, which impairs ATP synthesis and consequently, ATP-dependent cellular processes.

Clearly, none of the current hypotheses can sufficiently explain the selective vulnerability of SNc DA neurons, rather, a combination of the phenomena described above as well as

some yet unknown factors are responsible for the preferential susceptibility of this neuronal population.

### **Is mitochondrial complex I inhibition a causal factor for PD?**

Generic complex I inhibitors, such as MPTP, rotenone, or annonacin, can induce parkinsonian syndromes in humans and animal models, however, it is not clear whether their mode of action is restricted to complex I inhibition. Compatible with the complex I inhibition hypothesis, ectopic expression of Ndi1p, a yeast single-subunit NADH dehydrogenase that is insensitive to MPTP and rotenone, has been shown to protect DA neurons from MPTP and rotenone toxicity *in vitro* and *in vivo* (Sherer *et al*, 2003; Seo *et al*, 2006; Richardson *et al*, 2007; Marella *et al*, 2008). The role of complex I inhibition in PD has been challenged by a study using mice that lack functional *Ndufs4*, a gene encoding a subunit implicated in assembly and function of complex I. *Ndufs4* KO mice show neuronal degeneration in the cerebellum, olfactory bulb, and vestibular nuclei, whereas DA neurons are not affected (Kruse *et al*, 2008; Quintana *et al*, 2010; Choi *et al*, 2011). Moreover, midbrain primary cultures derived from *Ndufs4* KO mice are not protected against MPP<sup>+</sup> or rotenone, suggesting that toxicity of these drugs is not caused by complex I inhibition (Choi *et al*, 2008). *Ndufs4*-deficient DA neurons are even more sensitive to rotenone, and complex I-independent mechanisms have been reported to contribute to the toxicity of rotenone, such as microtubule depolymerization (Ren *et al*, 2005; Choi *et al*, 2011). However, it was recently shown that complex I activity is only partially decreased but not abolished in *Ndufs4* KO mice due to the formation of respiratory supercomplexes with a stabilizing effect of complex III (Calvaruso *et al*, 2012; Sterky *et al*, 2012). This finding can explain why *Ndufs4*-deficient neurons are still sensitive to MPTP and rotenone toxicity. DA neuron-specific conditional *Ndufs4* KO mice do not show overt nigrostriatal degeneration, only a mild decrease (7.5%) in tyrosine hydroxylase-positive neurons at 24 months of age (Sterky *et al*, 2012). Nevertheless, striatal dopamine turnover is increased and dopamine release is decreased in *Ndufs4*-deficient mice, which may reflect an early consequence of mitochondrial dysfunction. These findings support the notion that complex I deficiency can contribute to the pathogenesis of PD.

The most convincing link between PD genes and complex I activity was provided for PINK1. In fact, there is strong experimental evidence for a central role of complex I in PINK1-associated mitochondrial pathology. Complex I enzymatic activities are reduced in PINK1-deficient mice and flies (Gautier *et al*, 2008; Morais *et al*, 2009). In flies, expression of the yeast complex I equivalent Ndi1p rescues several PINK1-deficient phenotypes, and downregulation of complex I subunits phenocopies some PINK1-associated alterations (Vilain *et al*, 2012). A recent screen for genetic modifiers in PINK1-deficient flies identified Heix, a gene encoding a prenyltransferase involved in vitamin K2 biosynthesis (Vos *et al*, 2012). In the fly model, vitamin K2 was able to rescue mitochondrial morphological defects and to maintain ATP production, which has been attributed to its ability to serve as a mitochondrial electron carrier. The molecular mechanism of these interactions and its significance in mammalian models requires further investigation.

### **How can discrepant findings in *Drosophila* and mammalian PD models be explained?**

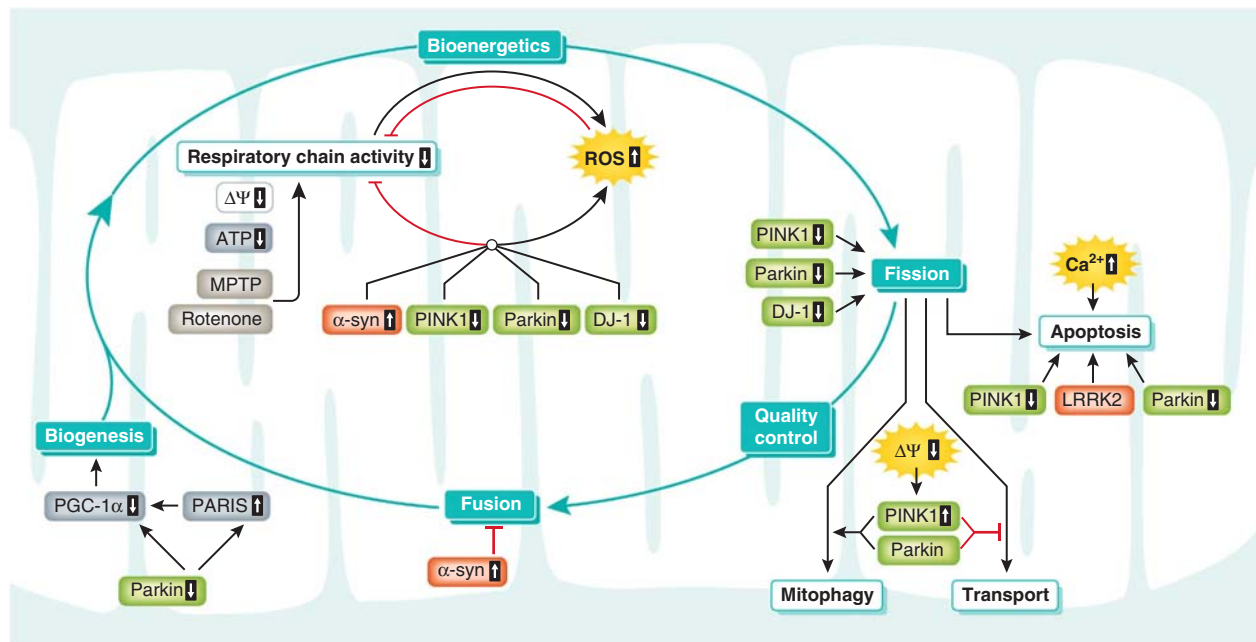
The *Drosophila* model has contributed valuable insights into PD pathogenesis. Importantly, it has been helpful to characterize the function of PD-associated genes and to identify genetic modifiers, thereby focusing research activities on key biochemical pathways. The strikingly similar phenotype of PINK1 and parkin mutant flies has revealed that parkin acts downstream of PINK1 to maintain mitochondrial integrity. Various effects of PINK1 and parkin on mitochondria have been described in different models, including mitochondrial morphology, dynamics, bioenergetics, transport, and quality control. Rather than a single linear pathway integrating all these effects described, diverse pathways account for these manifold activities that converge on mitochondria. Consistent with this notion, there are different activities of PINK1 and parkin that are either dependent or independent on each other.

What is still causing confusion in the field is the fact that opposing effects are reported from genetic fly and mammalian models. For example, the PINK1 or parkin mutant phenotypes in *Drosophila* can be rescued by decreasing mitochondrial fusion and increasing fission, whereas the acute loss of PINK1 or parkin in cellular mammalian models is reverted by increasing mitochondrial fusion or decreasing fission. A similar phenomenon has been reported for affecting mitochondrial transport. In PINK1 mutant flies, Miro levels are increased and Miro RNAi can rescue PINK1 mutant phenotypes (Liu *et al*, 2012). However, in human cells Miro levels are decreased in the absence of PINK1 and Miro overexpression can revert PINK1 deficiency (Weihsen *et al*, 2009; Liu *et al*, 2012). One plausible explanation for these seemingly discrepant findings is that mammalian cells have elaborate compensatory strategies that may be absent or different in flies. In fact, compensation can at least partly explain why genetic PD mouse models lack a striking phenotype and why patients with mutations in PD genes develop symptoms only after some decades when coping mechanisms may be less efficient due to ageing.

### **Does dysfunctional mitophagy cause PD?**

A role of parkin and PINK1 in mitochondrial quality control is appealing and can explain beneficial mitochondrial effects of these PD genes in different models. Beyond any doubt, parkin-induced autophagic removal of mitochondria is a robust phenomenon in cultured cells treated with mitochondrial uncouplers, such as CCCP. Parkin-induced mitophagy is strictly dependent on PINK1 expression, since parkin cannot translocate to uncoupled mitochondria in the absence of PINK1. There is an ongoing discussion as to whether PINK1/parkin-mediated mitophagy is a physiologically and pathophysiologically relevant pathway *in vivo*. The main criticism is that CCCP is a drastic unphysiological stressor that causes uncoupling of all mitochondria within seconds. Parkin-induced mitophagy has mostly been studied in established tumour cell lines or mouse embryonic fibroblasts, which preferentially produce ATP by glycolysis. In contrast, neurons depend on oxidative phosphorylation for ATP production and therefore may not easily discard their mitochondria. In parkin- or PINK1-deficient flies, enlarged aggregated mitochondria have been observed, however, this is not necessarily a consequence of defective mitochondrial





**Figure 5** PD genes are implicated in various aspects of mitochondrial biology. Products of autosomal recessive PD genes (shown in green) or autosomal dominant PD genes (shown in red) directly or indirectly affect a wide spectrum of mitochondrial processes, including their life cycle, bioenergetic capacity, quality control, dynamic changes of morphology and connectivity (fusion, fission), subcellular distribution (transport), and the regulation of cell death pathways.

clearance. In fact, it has not been demonstrated conclusively that the phenotypic alterations in parkin or PINK1 mutant flies are caused by an impairment of mitophagy. Moreover, parkin can rescue PINK1 mutant flies, which argues against defective mitophagy being responsible for the PINK1-deficient phenotype, given that parkin cannot promote mitophagy in the absence of PINK1.

## Perspective and future directions

Research into the function and dysfunction of PD-associated genes revealed that at least some of these genes interface with pathways regulating various aspects of mitochondrial biology (Figure 5). In fact, there is compelling evidence that mitochondrial dysfunction is a common denominator of sporadic and familial PD. Genome-wide association studies indicated that genetic variants of the classical PD genes *α-synuclein* and *LRRK2* increase the risk of developing sporadic PD, adding to the notion that sporadic and familial disease entities share common pathways. Emerging evidence suggests that bioenergetic deficits and dysregulation of the mitochondrial quality control rather than oxidative stress alone are relevant players in the pathogenesis of PD. Hence, a plethora of challenging issues remains to be addressed. First, it will be important to disentangle direct from indirect mitochondrial

effects. Second, results from *in-vitro* studies should be validated in suitable *in-vivo* models to prove the physiological or pathophysiological relevance of the observed effects. Third, we need to increase our understanding of the interaction of disease or susceptibility genes with environmental factors in triggering and/or promoting neurodegeneration. Most importantly, the ultimate aim would be to translate basic research into clinical practice by exploiting mitochondrial pathways as a rationale to intervene early in the pathogenic process. To this aim, it would be helpful to have reliable biomarkers or imaging techniques to identify patients, which are likely to benefit from mitochondria-based strategies.

## Acknowledgements

This work is supported by the Deutsche Forschungsgemeinschaft (SFB 596 'Molecular Mechanisms of Neurodegeneration'), the German Ministry for Education and Research (NGFN plus 'Functional Genomics of Parkinson's Disease'), the Helmholtz Alliance 'Mental Health in an Ageing Society', and the Center for Integrated Protein Science Munich (CIPSM). CH is supported by a 'Forschungsprofessur' provided by the LMU Excellence Program.

## Conflict of interest

The authors declare that they have no conflict of interest.

## References

Abeliovich A, Schmitz Y, Farinas I, Choi-Lundberg D, Ho WH, Castillo PE, Shinsky N, Verdugo JM, Armanini M, Ryan A, Hynes M, Phillips H, Sulzer D, Rosenthal A (2000) Mice lacking alpha-synuclein display functional deficits in the nigrostriatal dopamine system. *Neuron* **25**: 239–252

Abou-Sleiman PM, Muqit MM, Wood NW (2006) Expanding insights of mitochondrial dysfunction in Parkinson's disease. *Nat Rev Neurosci* **7**: 207–219

Adler CH, Connor DJ, Hentz JG, Sabbagh MN, Caviness JN, Shill HA, Noble B, Beach TG (2010) Incidental Lewy body disease: clinical comparison to a control cohort. *Mov Disord* **25**: 642–646

Alexander C, Votruba M, Pesch UE, Thiselton DL, Mayer S, Moore A, Rodriguez M, Kellner U, Leo-Kottler B, Auburger G, Bhattacharya SS, Wissinger B (2000) OPA1, encoding a dynamin-related GTPase, is mutated in autosomal dominant optic atrophy linked to chromosome 3q28. *Nat Genet* **26**: 211–215

- Agirre X, Roman-Gomez J, Vazquez I, Jimenez-Velasco A, Garate L, Montiel-Duarte C, Artieda P, Cordeu L, Lahortiga I, Calasanz MJ, Heiniger A, Torres A, Minna JD, Prosper F (2006) Abnormal methylation of the common PARK2 and PACRG promoter is associated with downregulation of gene expression in acute lymphoblastic leukemia and chronic myeloid leukemia. *Int J Cancer* **118**: 1945–1953
- Alvarez-Erviti L, Seow Y, Schapira AH, Gardiner C, Sargent IL, Wood MJ, Cooper JM (2011) Lysosomal dysfunction increases exosome-mediated alpha-synuclein release and transmission. *Neurobiol Dis* **42**: 360–367
- Amo T, Sato S, Saiki S, Wolf AM, Toyomizu M, Gautier CA, Shen J, Ohta S, Hattori N (2011) Mitochondrial membrane potential decrease caused by loss of PINK1 is not due to proton leak, but to respiratory chain defects. *Neurobiol Dis* **41**: 111–118
- Andres-Mateos E, Perier C, Zhang L, Blanchard-Fillion B, Greco TM, Thomas B, Ko HS, Sasaki M, Ischiropoulos H, Przedborski S, Dawson TM, Dawson VL (2007) DJ-1 gene deletion reveals that DJ-1 is an atypical peroxidase-like peroxidase. *Proc Natl Acad Sci USA* **104**: 14807–14812
- Anwar S, Peters O, Millership S, Ninkina N, Doig N, Connor-Robson N, Threlfell S, Kooner G, Deacon RM, Bannerman DM, Bolam JP, Chandra SS, Cragg SJ, Wade-Martins R, Buchman VL (2011) Functional alterations to the nigrostriatal system in mice lacking all three members of the synuclein family. *J Neurosci* **31**: 7264–7274
- Auluck PK, Caraveo G, Lindquist S (2010) alpha-Synuclein: membrane interactions and toxicity in Parkinson's disease. *Annu Rev Cell Dev Biol* **26**: 211–233
- Barrett JC, Hansoul S, Nicolae DL, Cho JH, Duerr RH, Rioux JD, Brant SR, Silverberg MS, Taylor KD, Barmada MM, Bitton A, Dassopoulos T, Datta LW, Green T, Griffiths AM, Kistner EO, Murtha MT, Regueiro MD, Rotter JI, Schumm LP *et al* (2008) Genome-wide association defines more than 30 distinct susceptibility loci for Crohn's disease. *Nat Genet* **40**: 955–962
- Bartels T, Choi JG, Selkoe DJ (2011) alpha-Synuclein occurs physiologically as a helically folded tetramer that resists aggregation. *Nature* **477**: 107–110
- Behrends C, Harper JW (2011) Constructing and decoding unconventional ubiquitin chains. *Nat Struct Mol Biol* **18**: 520–528
- Bender A, Krishnan KJ, Morris CM, Taylor GA, Reeve AK, Perry RH, Jaros E, Hershenson JS, Betts J, Klopstock T, Taylor RW, Turnbull DM (2006) High levels of mitochondrial DNA deletions in substantia nigra neurons in aging and Parkinson disease. *Nat Genet* **38**: 515–517
- Berger AK, Cortese GP, Amodeo KD, Weihofen A, Letai A, LaVoie MJ (2009) Parkin selectively alters the intrinsic threshold for mitochondrial cytochrome c release. *Hum Mol Genet* **18**: 4317–4328
- Berwick DC, Harvey K (2011) LRRK2 signaling pathways: the key to unlocking neurodegeneration? *Trends Cell Biol* **21**: 257–265
- Beyer K (2007) Mechanistic aspects of Parkinson's disease: alpha-synuclein and the biomembrane. *Cell Biochem Biophys* **47**: 285–299
- Bezard E, Przedborski S (2011) A tale on animal models of Parkinson's disease. *Mov Disord* **26**: 993–1002
- Biskup S, Moore DJ, Celsi F, Higashi S, West AB, Andrabi SA, Kurkinen K, Yu SW, Savitt JM, Waldvogel HJ, Faull RL, Emson PC, Torp R, Ottersen OP, Dawson TM, Dawson VL (2006) Localization of LRRK2 to membranous and vesicular structures in mammalian brain. *Ann Neurol* **60**: 557–569
- Blackinton J, Lakshminarasimhan M, Thomas KJ, Ahmad R, Greggio E, Raza AS, Cookson MR, Wilson MA (2009) Formation of a stabilized cysteine sulfinic acid is critical for the mitochondrial function of the parkinsonism protein DJ-1. *J Biol Chem* **284**: 6476–6485
- Bogaerts V, Theuns J, van Broeckhoven C (2008) Genetic findings in Parkinson's disease and translation into treatment: a leading role for mitochondria? *Genes Brain Behav* **7**: 129–151
- Bonifati V, Rizzu P, van Baren MJ, Schaap O, Breedveld GJ, Krieger E, Dekker MC, Squitieri F, Ibanez P, Joosse M, van Dongen JW, Vanacore N, van Swieten JC, Brice A, Meco G, van Duijn CM, Oostra BA, Heutink P (2003) Mutations in the DJ-1 gene associated with autosomal recessive early-onset parkinsonism. *Science* **299**: 256–259
- Bouman L, Schlierf A, Lutz AK, Shan J, Deinlein A, Kast J, Galehdar Z, Palmisano V, Patenge N, Berg D, Gasser T, Augustin R, Trumbach D, Irrcher I, Park DS, Wurst W, Kilberg MS, Tatzelt J, Winklhofer KF (2011) Parkin is transcriptionally regulated by ATF4: evidence for an interconnection between mitochondrial stress and ER stress. *Cell Death Differ* **18**: 769–782
- Brundin P, Melki R, Kopito R (2010) Prion-like transmission of protein aggregates in neurodegenerative diseases. *Nat Rev Mol Cell Biol* **11**: 301–307
- Bueler H (2010) Mitochondrial dynamics, cell death and the pathogenesis of Parkinson's disease. *Apoptosis* **15**: 1336–1353
- Burbulla LF, Krebiel G, Kruger R (2010) Balance is the challenge—the impact of mitochondrial dynamics in Parkinson's disease. *Eur J Clin Invest* **40**: 1048–1060
- Burre J, Sharma M, Tsetsenis T, Buchman V, Etherton MR, Sudhof TC (2010) Alpha-synuclein promotes SNARE-complex assembly *in vivo* and *in vitro*. *Science* **329**: 1663–1667
- Butler EK, Voigt A, Lutz AK, Toegel JP, Gerhardt E, Karsten P, Falkenburger B, Reinartz A, Winklhofer KF, Schulz JB (2012) The mitochondrial chaperone TRAP1 mitigates alpha-synuclein toxicity. *PLoS Genet* **8**: e1002488
- Cairns RA, Harris IS, Mak TW (2011) Regulation of cancer cell metabolism. *Nat Rev Cancer* **11**: 85–95
- Calvaruso MA, Willems P, van den Brand M, Valsecchi F, Kruse S, Palminter R, Smeitink J, Nijtmans L (2012) Mitochondrial complex III stabilizes complex I in the absence of NDUFS4 to provide partial activity. *Hum Mol Genet* **21**: 115–120
- Campello S, Scorrano L (2010) Mitochondrial shape changes: orchestrating cell pathophysiology. *EMBO Rep* **11**: 678–684
- Canet-Aviles RM, Wilson MA, Miller DW, Ahmad R, McLendon C, Bandyopadhyay S, Baptista MJ, Ringe D, Petsko GA, Cookson MR (2004) The Parkinson's disease protein DJ-1 is neuroprotective due to cysteine-sulfinic acid-driven mitochondrial localization. *Proc Natl Acad Sci USA* **101**: 9103–9108
- Cannon JR, Greenamyre JT (2011) The role of environmental exposures in neurodegeneration and neurodegenerative diseases. *Toxicol Sci* **124**: 225–250
- Caparros-Lefebvre D, Elbaz A (1999) Possible relation of atypical parkinsonism in the French West Indies with consumption of tropical plants: a case-control study. Caribbean Parkinsonism Study Group. *Lancet* **354**: 281–286
- Casarejos MJ, Menendez J, Solano RM, Rodriguez-Navarro JA, Garcia de Yébenes J, Mena MA (2006) Susceptibility to rotenone is increased in neurons from parkin null mice and is reduced by minocycline. *J Neurochem* **97**: 934–946
- Caudle WM, Richardson JR, Wang MZ, Taylor TN, Guillot TS, McCormack AL, Colebrooke RE, Di Monte DA, Emson PC, Miller GW (2007) Reduced vesicular storage of dopamine causes progressive nigrostriatal neurodegeneration. *J Neurosci* **27**: 8138–8148
- Cesari R, Martin ES, Calin GA, Pentimalli F, Bichi R, McAdams H, Trapasso F, Drusco A, Shimizu M, Masciullo V, D'Andrilli G, Scambia G, Picchio MC, Alder H, Godwin AK, Croce CM (2003) Parkin, a gene implicated in autosomal recessive juvenile parkinsonism, is a candidate tumor suppressor gene on chromosome 6q25–q27. *Proc Natl Acad Sci USA* **100**: 5956–5961
- Cha GH, Kim S, Park J, Lee E, Kim M, Lee SB, Kim JM, Chung J, Cho KS (2005) Parkin negatively regulates JNK pathway in the dopaminergic neurons of Drosophila. *Proc Natl Acad Sci USA* **102**: 10345–10350
- Champy P, Hoglinger GU, Feger J, Gleye C, Hocquemiller R, Laurens A, Guerinéau V, Laprevote O, Medja F, Lombes A, Michel PP, Lannuzel A, Hirsch EC, Ruberg M (2004) Annonacin, a lipophilic inhibitor of mitochondrial complex I, induces nigral and striatal neurodegeneration in rats: possible relevance for atypical parkinsonism in Guadeloupe. *J Neurochem* **88**: 63–69
- Chan CS, Guzman JN, Ilijic E, Mercer JN, Rick C, Tkatch T, Meredith GE, Surmeier DJ (2007) 'Rejuvenation' protects neurons in mouse models of Parkinson's disease. *Nature* **447**: 1081–1086
- Chan DC (2006) Mitochondria: dynamic organelles in disease, aging, and development. *Cell* **125**: 1241–1252
- Chan NC, Salazar AM, Pham AH, Sweredoski MJ, Kolawa NJ, Graham RL, Hess S, Chan DC (2011) Broad activation of the ubiquitin-proteasome system by Parkin is critical for mitophagy. *Hum Mol Genet* **20**: 1726–1737
- Chandra S, Gallardo G, Fernandez-Chacon R, Schluter OM, Sudhof TC (2005) Alpha-synuclein cooperates with CSPalpha in preventing neurodegeneration. *Cell* **123**: 383–396

- Chartier-Harlin MC, Kachergus J, Roumier C, Mouroux V, Douay X, Lincoln S, Leveque C, Larvor L, Andrieux J, Hulihan M, Waucquier N, Defebvre L, Amouyel P, Farrer M, Destee A (2004) Alpha-synuclein locus duplication as a cause of familial Parkinson's disease. *Lancet* **364**: 1167–1169
- Chinta SJ, Andersen JK (2008) Redox imbalance in Parkinson's disease. *Biochim Biophys Acta* **1780**: 1362–1367
- Chinta SJ, Mallajosyula JK, Rane A, Andersen JK (2010) Mitochondrial alpha-synuclein accumulation impairs complex I function in dopaminergic neurons and results in increased mitophagy *in vivo*. *Neurosci Lett* **486**: 235–239
- Choi WS, Kruse SE, Palmiter RD, Xia Z (2008) Mitochondrial complex I inhibition is not required for dopaminergic neuron death induced by rotenone, MPP+, or paraquat. *Proc Natl Acad Sci USA* **105**: 15136–15141
- Choi WS, Palmiter RD, Xia Z (2011) Loss of mitochondrial complex I activity potentiates dopamine neuron death induced by microtubule dysfunction in a Parkinson's disease model. *J Cell Biol* **192**: 873–882
- Choubey V, Safiulina D, Vaarmann A, Cagalinec M, Wareski P, Kuum M, Zharkovsky A, Kaasik A (2011) Mutant A53T alpha-synuclein induces neuronal death by increasing mitochondrial autophagy. *J Biol Chem* **286**: 10814–10824
- Chung KK, Thomas B, Li X, Pletnikova O, Troncoso JC, Marsh L, Dawson VL, Dawson TM (2004) S-nitrosylation of parkin regulates ubiquitination and compromises parkin's protective function. *Science* **304**: 1328–1331
- Clark IE, Dodson MW, Jiang C, Cao JH, Huh JR, Seol JH, Yoo SJ, Hay BA, Guo M (2006) Drosophila pink1 is required for mitochondrial function and interacts genetically with parkin. *Nature* **441**: 1162–1166
- Cole NB, Dieulliis D, Leo P, Mitchell DC, Nussbaum RL (2008) Mitochondrial translocation of alpha-synuclein is promoted by intracellular acidification. *Exp Cell Res* **314**: 2076–2089
- Cookson MR (2009) alpha-Synuclein and neuronal cell death. *Mol Neurodegener* **4**: 9
- Cookson MR (2010a) DJ-1, PINK1, and their effects on mitochondrial pathways. *Mov Disord* **25**(Suppl 1): S44–S48
- Cookson MR (2010b) The role of leucine-rich repeat kinase 2 (LRRK2) in Parkinson's disease. *Nat Rev Neurosci* **11**: 791–797
- Cookson MR, Lockhart PJ, McLendon C, O'Farrell C, Schlossmacher M, Farrer MJ (2003) RING finger 1 mutations in Parkin produce altered localization of the protein. *Hum Mol Genet* **12**: 2957–2965
- Cookson MR, van der Brug M (2008) Cell systems and the toxic mechanism(s) of alpha-synuclein. *Exp Neurol* **209**: 5–11
- Corti O, Lesage S, Brice A (2011) What genetics tells us about the causes and mechanisms of Parkinson's disease. *Physiol Rev* **91**: 1161–1218
- Cui M, Tang X, Christian WV, Yoon Y, Tieu K (2010) Perturbations in mitochondrial dynamics induced by human mutant PINK1 can be rescued by the mitochondrial division inhibitor mdivi-1. *J Biol Chem* **285**: 11740–11752
- da Costa CA, Sunyach C, Giaime E, West A, Corti O, Brice A, Safe S, Abou-Sleiman PM, Wood NW, Takahashi H, Goldberg MS, Shen J, Checler F (2009) Transcriptional repression of p53 by parkin and impairment by mutations associated with autosomal recessive juvenile Parkinson's disease. *Nat Cell Biol* **11**: 1370–1375
- Dagda RK, Cherra 3rd SJ, Kulich SM, Tandon A, Park D, Chu CT (2009) Loss of PINK1 function promotes mitophagy through effects on oxidative stress and mitochondrial fission. *J Biol Chem* **284**: 13843–13855
- Dagda RK, Gusdon AM, Pien I, Strack S, Green S, Li C, Van Houten B, Cherra 3rd SJ, Chu CT (2011) Mitochondrially localized PKA reverses mitochondrial pathology and dysfunction in a cellular model of Parkinson's disease. *Cell Death Differ* **18**: 1914–1923
- Daher JP, Pletnikova O, Biskup S, Musso A, Gellhaar S, Galter D, Troncoso JC, Lee MK, Dawson TM, Dawson VL, Moore DJ (2012) Neurodegenerative phenotypes in an A53T alpha-synuclein transgenic mouse model are independent of LRRK2. *Hum Mol Genet* **21**: 2420–2431
- Daniels V, Baekelandt V, Taymans JM (2011) On the road to leucine-rich repeat kinase 2 signalling: evidence from cellular and *in vivo* studies. *Neurosignals* **19**: 1–15
- Dauer W, Kholodilov N, Vila M, Trillat AC, Goodchild R, Larsen KE, Staal R, Tieu K, Schmitz Y, Yuan CA, Rocha M, Jackson-Lewis V, Hersch S, Sulzer D, Przedborski S, Burke R, Hen R (2002) Resistance of alpha-synuclein null mice to the parkinsonian neurotoxin MPTP. *Proc Natl Acad Sci USA* **99**: 14524–14529
- Davidson WS, Jonas A, Clayton DF, George JM (1998) Stabilization of alpha-synuclein secondary structure upon binding to synthetic membranes. *J Biol Chem* **273**: 9443–9449
- Davis GC, Williams AC, Markey SP, Ebert MH, Caine ED, Reichert CM, Kopin IJ (1979) Chronic Parkinsonism secondary to intravenous injection of meperidine analogues. *Psychiatry Res* **1**: 249–254
- Dawson TM, Dawson VL (2010) The role of parkin in familial and sporadic Parkinson's disease. *Mov Disord* **25**(Suppl 1): S32–S39
- Dawson TM, Ko HS, Dawson VL (2010) Genetic animal models of Parkinson's disease. *Neuron* **66**: 646–661
- Deas E, Plun-Favreau H, Gandhi S, Desmond H, Kjaer S, Loh SH, Renton AE, Harvey RJ, Whitworth AJ, Martins LM, Abramov AY, Wood NW (2011) PINK1 cleavage at position A103 by the mitochondrial protease PARL. *Hum Mol Genet* **20**: 867–879
- Deas E, Plun-Favreau H, Wood NW (2009) PINK1 function in health and disease. *EMBO Mol Med* **1**: 152–165
- Delettre C, Lenaers G, Griffoin JM, Gigarel N, Lorenzo C, Belenguer P, Pelloquin L, Grosgeorge J, Turc-Carel C, Perret E, Astarie-Dequeker C, Lasquelles L, Arnaud B, Ducommun B, Kaplan J, Hamel CP (2000) Nuclear gene OPA1, encoding a mitochondrial dynamin-related protein, is mutated in dominant optic atrophy. *Nat Genet* **26**: 207–210
- Deng H, Dodson MW, Huang H, Guo M (2008a) The Parkinson's disease genes pink1 and parkin promote mitochondrial fission and/or inhibit fusion in Drosophila. *Proc Natl Acad Sci USA* **105**: 14503–14508
- Deng J, Lewis PA, Greggio E, Sluch E, Beilina A, Cookson MR (2008b) Structure of the ROC domain from the Parkinson's disease-associated leucine-rich repeat kinase 2 reveals a dimeric GTPase. *Proc Natl Acad Sci USA* **105**: 1499–1504
- Denison SR, Callahan G, Becker NA, Phillips LA, Smith DI (2003a) Characterization of FRA6E and its potential role in autosomal recessive juvenile parkinsonism and ovarian cancer. *Genes Chromosomes Cancer* **38**: 40–52
- Denison SR, Wang F, Becker NA, Schule B, Kock N, Phillips LA, Klein C, Smith DI (2003b) Alterations in the common fragile site gene Parkin in ovarian and other cancers. *Oncogene* **22**: 8370–8378
- Deshaies RJ, Joazeiro CA (2009) RING domain E3 ubiquitin ligases. *Annu Rev Biochem* **78**: 399–434
- Desplats P, Lee HJ, Bae EJ, Patrick C, Rockenstein E, Crews L, Spencer B, Masliah E, Lee SJ (2009) Inclusion formation and neuronal cell death through neuron-to-neuron transmission of alpha-synuclein. *Proc Natl Acad Sci USA* **106**: 13010–13015
- Detmer SA, Chan DC (2007) Functions and dysfunctions of mitochondrial dynamics. *Nat Rev Mol Cell Biol* **8**: 870–879
- Devi L, Raghavendran V, Prabhu BM, Avadhani NG, Anandatheerthavarada HK (2008) Mitochondrial import and accumulation of alpha-synuclein impair complex I in human dopaminergic neuronal cultures and Parkinson disease brain. *J Biol Chem* **283**: 9089–9100
- Devine MJ, Plun-Favreau H, Wood NW (2011) Parkinson's disease and cancer: two wars, one front. *Nat Rev Cancer* **11**: 812–823
- Ding WX, Ni HM, Li M, Liao Y, Chen X, Stolz DB, Dorn 2nd GW, Yin XM (2010) Nix is critical to two distinct phases of mitophagy, reactive oxygen species-mediated autophagy induction and Parkin-ubiquitin-p62-mediated mitochondrial priming. *J Biol Chem* **285**: 27879–27890
- Dong Z, Ferger B, Feldon J, Bueler H (2002) Overexpression of Parkinson's disease-associated alpha-synucleinA53T by recombinant adeno-associated virus in mice does not increase the vulnerability of dopaminergic neurons to MPTP. *J Neurobiol* **53**: 1–10
- Dusonchet J, Kochubey O, Stafa K, Young Jr SM, Zufferey R, Moore DJ, Schneider BL, Aebischer P (2011) A rat model of progressive nigral neurodegeneration induced by the Parkinson's disease-associated G2019S mutation in LRRK2. *J Neurosci* **31**: 907–912
- Edwards TL, Scott WK, Almonte C, Burt A, Powell EH, Beecham GW, Wang L, Zuchner S, Konidari I, Wang G, Singer C, Nahab F, Scott B, Stajich JM, Pericak-Vance M, Haines J, Vance JM, Martin ER (2010) Genome-wide association study confirms SNPs in SNCA and the MAPT region as common risk factors for Parkinson disease. *Ann Hum Genet* **74**: 97–109
- Ekstrand MI, Terzioglu M, Galter D, Zhu S, Hofstetter C, Lindqvist E, Thams S, Bergstrand A, Hansson FS, Trifunovic A, Hoffer B,

- Cullheim S, Mohammed AH, Olson L, Larsson NG (2007) Progressive parkinsonism in mice with respiratory-chain-deficient dopamine neurons. *Proc Natl Acad Sci USA* **104**: 1325–1330
- Eliezer D, Kutluay E, Bussell Jr R, Browne G (2001) Conformational properties of alpha-synuclein in its free and lipid-associated states. *J Mol Biol* **307**: 1061–1073
- Ellis CE, Murphy EJ, Mitchell DC, Golovko MY, Scaglia F, Barcelo-Coblijn GC, Nussbaum RL (2005) Mitochondrial lipid abnormality and electron transport chain impairment in mice lacking alpha-synuclein. *Mol Cell Biol* **25**: 10190–10201
- Emmanouilidou E, Melachroinou K, Roumeliotis T, Garbis SD, Ntzouni M, Margaritis LH, Stefanis L, Vekrellis K (2010) Cell-produced alpha-synuclein is secreted in a calcium-dependent manner by exosomes and impacts neuronal survival. *J Neurosci* **30**: 6838–6851
- Exner N, Treske B, Paquet D, Holmstrom K, Schiesling C, Gispert S, Carballo-Carbajal I, Berg D, Hoepken HH, Gasser T, Kruger R, Winklhofer KF, Vogel F, Reichert AS, Auburger G, Kahle PJ, Schmid B, Haass C (2007) Loss-of-function of human PINK1 results in mitochondrial pathology and can be rescued by parkin. *J Neurosci* **27**: 12413–12418
- Fallon L, Belanger CM, Corera AT, Kontogiannina M, Regan-Klapisz E, Moreau F, Voortman J, Haber M, Rouleau G, Thorarinsdottir T, Brice A, van Bergen En Henegouwen PM, Fon EA (2006) A regulated interaction with the UIM protein Eps15 implicates parkin in EGF receptor trafficking and PI(3)K-Akt signalling. *Nat Cell Biol* **8**: 834–842
- Farrer M, Kachergus J, Forno L, Lincoln S, Wang DS, Hulihan M, Maraganore D, Gwinn-Hardy K, Wszolek Z, Dickson D, Langston JW (2004) Comparison of kindreds with parkinsonism and alpha-synuclein genomic multiplications. *Ann Neurol* **55**: 174–179
- Fauvet B, Kamdem MM, Fares MB, Desobry C, Michael S, Ardah MT, Tsika E, Coune P, Prudent M, Lion N, Eliezer D, Moore DJ, Schneider B, Aebischer P, El-Agnaf OM, Masliah E, Lashuel HA (2012) Alpha-synuclein in the central nervous system and from erythrocytes, mammalian cells and *E. coli* exists predominantly as a disordered monomer. *J Biol Chem* **287**: 15345–15364
- Fournier M, Vitte J, Garrige J, Langui D, Dullin JP, Saurini F, Hanoun N, Perez-Diaz F, Cornilleau F, Joubert C, Ardila-Sororio H, Traver S, Duchateau R, Goujet-Zalc C, Paleologou K, Lashuel HA, Haass C, Duyckaerts C, Cohen-Salmon C, Kahle PJ *et al* (2009) Parkin deficiency delays motor decline and disease manifestation in a mouse model of synucleinopathy. *PLoS One* **4**: e6629
- Frank-Cannon TC, Tran T, Ruhn KA, Martinez TN, Hong J, Marvin M, Hartley M, Trevino I, O'Brien DE, Casey B, Goldberg MS, Tansey MG (2008) Parkin deficiency increases vulnerability to inflammation-related nigral degeneration. *J Neurosci* **28**: 10825–10834
- Franke A, McGovern DP, Barrett JC, Wang K, Radford-Smith GL, Ahmad T, Lees CW, Balsa Chun T, Lee J, Roberts R, Anderson CA, Bis JC, Bumpstead S, Ellinghaus D, Festen EM, Georges M, Green T, Haritunians T, Jostins L, Latiano A *et al* (2010) Genome-wide meta-analysis increases to 71 the number of confirmed Crohn's disease susceptibility loci. *Nat Genet* **42**: 1118–1125
- Frost B, Diamond MI (2010) Prion-like mechanisms in neurodegenerative diseases. *Nat Rev Neurosci* **11**: 155–159
- Fujiwara H, Hasegawa M, Dohmae N, Kawashima A, Masliah E, Goldberg MS, Shen J, Takio K, Iwatsubo T (2002) alpha-Synuclein is phosphorylated in synucleinopathy lesions. *Nat Cell Biol* **4**: 160–164
- Fujiwara M, Marusawa H, Wang HQ, Iwai A, Ikeuchi K, Imai Y, Kataoka A, Nukina N, Takahashi R, Chiba T (2008) Parkin as a tumor suppressor gene for hepatocellular carcinoma. *Oncogene* **27**: 6002–6011
- Fukui H, Moraes CT (2008) The mitochondrial impairment, oxidative stress and neurodegeneration connection: reality or just an attractive hypothesis? *Trends Neurosci* **31**: 251–256
- Gandhi S, Wood-Kaczmar A, Yao Z, Plun-Favreau H, Deas E, Klupsch K, Downward J, Latchman DS, Tabrizi SJ, Wood NW, Duchen MR, Abramov AY (2009) PINK1-associated Parkinson's disease is caused by neuronal vulnerability to calcium-induced cell death. *Mol Cell* **33**: 627–638
- Gardet A, Benita Y, Li C, Sands BE, Ballester I, Stevens C, Korzenik JR, Rioux JD, Daly MJ, Xavier RJ, Podolsky DK (2010) LRRK2 is involved in the IFN-gamma response and host response to pathogens. *J Immunol* **185**: 5577–5585
- Gautier CA, Kitada T, Shen J (2008) Loss of PINK1 causes mitochondrial functional defects and increased sensitivity to oxidative stress. *Proc Natl Acad Sci USA* **105**: 11364–11369
- Gegg ME, Cooper JM, Chau KY, Rojo M, Schapira AH, Taanman JW (2010) Mitofusin 1 and mitofusin 2 are ubiquitinated in a PINK1/parkin-dependent manner upon induction of mitophagy. *Hum Mol Genet* **19**: 4861–4870
- Gegg ME, Cooper JM, Schapira AH, Taanman JW (2009) Silencing of PINK1 expression affects mitochondrial DNA and oxidative phosphorylation in dopaminergic cells. *PLoS One* **4**: e4756
- Geisler S, Holmstrom KM, Skujat D, Fiesel FC, Rothfuss OC, Kahle PJ, Springer W (2010a) PINK1/Parkin-mediated mitophagy is dependent on VDAC1 and p62/SQSTM1. *Nat Cell Biol* **12**: 119–131
- Geisler S, Holmstrom KM, Treis A, Skujat D, Weber SS, Fiesel FC, Kahle PJ, Springer W (2010b) The PINK1/Parkin-mediated mitophagy is compromised by PD-associated mutations. *Autophagy* **6**: 871–878
- Gems D, Doonan R (2009) Antioxidant defense and aging in *C. elegans*: is the oxidative damage theory of aging wrong? *Cell Cycle* **8**: 1681–1687
- Giasson BI, Murray IV, Trojanowski JQ, Lee VM (2001) A hydrophobic stretch of 12 amino acid residues in the middle of alpha-synuclein is essential for filament assembly. *J Biol Chem* **276**: 2380–2386
- Gispert S, Ricciardi F, Kurz A, Azizov M, Hoepken HH, Becker D, Voos W, Leuner K, Muller WE, Kudin AP, Kunz WS, Zimmermann A, Roeper J, Wenzel D, Jendrach M, Garcia-Arencibia M, Fernandez-Ruiz J, Huber L, Rohrer H, Barrera M *et al* (2009) Parkinson phenotype in aged PINK1-deficient mice is accompanied by progressive mitochondrial dysfunction in absence of neurodegeneration. *PLoS One* **4**: e5777
- Gitler AD, Bevis BJ, Shorter J, Strathearn KE, Hamamichi S, Su LJ, Caldwell KA, Caldwell GA, Rochet JC, McCaffery JM, Barlowe C, Lindquist S (2008) The Parkinson's disease protein alpha-synuclein disrupts cellular Rab homeostasis. *Proc Natl Acad Sci USA* **105**: 145–150
- Glater EE, Megeath LJ, Stowers RS, Schwarz TL (2006) Axonal transport of mitochondria requires mitor to recruit kinesin heavy chain and is light chain independent. *J Cell Biol* **173**: 545–557
- Glauser L, Sonnay S, Stafa K, Moore DJ (2011) Parkin promotes the ubiquitination and degradation of the mitochondrial fusion factor mitofusin 1. *J Neurochem* **118**: 636–645
- Gloeckner CJ, Boldt K, von Zweydrorf F, Helm S, Wiesent L, Sarioglu H, Ueffing M (2010) Phosphopeptide analysis reveals two discrete clusters of phosphorylation in the N-terminus and the Roc domain of the Parkinson-disease associated protein kinase LRRK2. *J Proteome Res* **9**: 1738–1745
- Gloeckner CJ, Kinkl N, Schumacher A, Braun RJ, O'Neill E, Meitinger T, Kolch W, Prokisch H, Ueffing M (2006) The Parkinson disease causing LRRK2 mutation I2020T is associated with increased kinase activity. *Hum Mol Genet* **15**: 223–232
- Gloeckner CJ, Schumacher A, Boldt K, Ueffing M (2009) The Parkinson disease-associated protein kinase LRRK2 exhibits MAPKKK activity and phosphorylates MKK3/6 and MKK4/7, *in vitro*. *J Neurochem* **109**: 959–968
- Gotthardt K, Weyand M, Kortholt A, Van Haastert PJ, Wittinghofer A (2008) Structure of the Roc-COR domain tandem of *C. tepidum*, a prokaryotic homologue of the human LRRK2 Parkinson kinase. *EMBO J* **27**: 2352
- Greene AW, Grenier K, Aguilera MA, Muise S, Farazifard R, Haque ME, McBride HM, Park DS, Fon EA (2012) Mitochondrial processing peptidase regulates PINK1 processing, import and Parkin recruitment. *EMBO Rep* **13**: 378–385
- Greggio E, Jain S, Kingsbury A, Bandopadhyay R, Lewis P, Kaganovich A, van der Brug MP, Beilina A, Blackinton J, Thomas KJ, Ahmad R, Miller DW, Kesavapany S, Singleton A, Lees A, Harvey RJ, Harvey K, Cookson MR (2006) Kinase activity is required for the toxic effects of mutant LRRK2/dardarin. *Neurobiol Dis* **23**: 329–341
- Greggio E, Taymans JM, Zhen EY, Ryder J, Vancaerenbroeck R, Beilina A, Sun P, Deng J, Jaffe H, Baekelandt V, Merchant K, Cookson MR (2009) The Parkinson's disease kinase LRRK2 autophosphorylates its GTPase domain at multiple sites. *Biochem Biophys Res Commun* **389**: 449–454
- Greggio E, Zambrano I, Kaganovich A, Beilina A, Taymans JM, Daniels V, Lewis P, Jain S, Ding J, Syed A, Thomas KJ, Baekelandt

- V, Cookson MR (2008) The Parkinson disease-associated leucine-rich repeat kinase 2 (LRRK2) is a dimer that undergoes intramolecular autophosphorylation. *J Biol Chem* **283**: 16906–16914
- Grunewald A, Voges L, Rakovic A, Kasten M, Vandebona H, Hemmelmann C, Lohmann K, Orolicki S, Ramirez A, Schapira AH, Pramstaller PP, Sue CM, Klein C (2010) Mutant Parkin impairs mitochondrial function and morphology in human fibroblasts. *PLoS One* **5**: e12962
- Gu WJ, Corti O, Araujo F, Hampe C, Jacquier S, Lucking CB, Abbas N, Duyckaerts C, Rooney T, Pradier L, Ruberg M, Brice A (2003) The C289G and C418R missense mutations cause rapid sequestration of human Parkin into insoluble aggregates. *Neurobiol Dis* **14**: 357–364
- Guo X, Macleod GT, Wellington A, Hu F, Panchumarthi S, Schoenfield M, Marin L, Charlton MP, Atwood HL, Zinsmaier KE (2005) The GTPase dMiro is required for axonal transport of mitochondria to Drosophila synapses. *Neuron* **47**: 379–393
- Hamza TH, Chen H, Hill-Burns EM, Rhodes SL, Montimurro J, Kay DM, Tenesa A, Kusel VI, Sheehan P, Eaaswarkhanth M, Yearout D, Samii A, Roberts JW, Agarwal P, Bordelon Y, Park Y, Wang L, Gao J, Vance JM, Kendler KS *et al* (2011) Genome-wide gene-environment study identifies glutamate receptor gene GRIN2A as a Parkinson's disease modifier gene via interaction with coffee. *PLoS Genet* **7**: e1002237
- Hamza TH, Zabetian CP, Tenesa A, Laederach A, Montimurro J, Yearout D, Kay DM, Doheny KF, Paschall J, Pugh E, Kusel VI, Collura R, Roberts J, Griffith A, Samii A, Scott WK, Nutt J, Factor SA, Payami H (2010) Common genetic variation in the HLA region is associated with late-onset sporadic Parkinson's disease. *Nat Genet* **42**: 781–785
- Hansen C, Angot E, Bergstrom AL, Steiner JA, Pieri L, Paul G, Outeiro TF, Melki R, Kallunki P, Fog K, Li JY, Brundin P (2011) alpha-Synuclein propagates from mouse brain to grafted dopaminergic neurons and seeds aggregation in cultured human cells. *J Clin Invest* **121**: 715–725
- Hansen C, Li JY (2012) Beyond alpha-synuclein transfer: pathology propagation in Parkinson's disease. *Trends Mol Med* **18**: 248–255
- Haque ME, Mount MP, Safarpour F, Abdel-Messih E, Callaghan S, Mazerolle C, Kitada T, Slack RS, Wallace V, Shen J, Anisman H, Park DS (2012) Inactivation of Pink1 *in vivo* sensitizes dopamine producing neurons to 1-methyl-4-phenyl-1,2,3,6-tetrahydropyridine (MPTP) and can be rescued by autosomal recessive PD genes, Parkin or DJ-1. *J Biol Chem* (advance online publication, 17 April 2012)
- Haque ME, Thomas KJ, D'Souza C, Callaghan S, Kitada T, Slack RS, Fraser P, Cookson MR, Tandon A, Park DS (2008) Cytoplasmic Pink1 activity protects neurons from dopaminergic neurotoxin MPTP. *Proc Natl Acad Sci USA* **105**: 1716–1721
- Hasegawa T, Treis A, Patenge N, Fiesel FC, Springer W, Kahle PJ (2008) Parkin protects against tyrosinase-mediated dopamine neurotoxicity by suppressing stress-activated protein kinase pathways. *J Neurochem* **105**: 1700–1715
- Heeman B, Van den Haute C, Aelvoet SA, Valsecchi F, Rodenburg RJ, Reumers V, Debyser Z, Callewaert G, Koopman WJ, Willems PH, Baekelandt V (2011) Depletion of PINK1 affects mitochondrial metabolism, calcium homeostasis and energy maintenance. *J Cell Sci* **124**: 1115–1125
- Henchcliffe C, Beal MF (2008) Mitochondrial biology and oxidative stress in Parkinson disease pathogenesis. *Nat Clin Pract Neurol* **4**: 600–609
- Henn IH, Bouman L, Schlehe JS, Schlierf A, Schramm JE, Wegener E, Nakaso K, Culmsee C, Berninger B, Krappmann D, Tatzelt J, Winklhofer KF (2007) Parkin mediates neuroprotection through activation of IkkappaB kinase/nuclear factor-kappaB signaling. *J Neurosci* **27**: 1868–1878
- Hirsch EC (2007) Animal models in neurodegenerative diseases. *J Neural Transm* **72**(Suppl): 87–90
- Ho CC, Rideout HJ, Ribe E, Troy CM, Dauer WT (2009) The Parkinson disease protein leucine-rich repeat kinase 2 transduces death signals via Fas-associated protein with death domain and caspase-8 in a cellular model of neurodegeneration. *J Neurosci* **29**: 1011–1016
- Hoepken HH, Gispert S, Morales B, Wingerter O, Del Turco D, Mulsch A, Nussbaum RL, Muller K, Drose S, Brandt U, Deller T, Wirth B, Kudin AP, Kunz WS, Auburger G (2007) Mitochondrial dysfunction, peroxidation damage and changes in glutathione metabolism in PARK6. *Neurobiol Dis* **25**: 401–411
- Hristova VA, Beasley SA, Rylett RJ, Shaw GS (2009) Identification of a novel Zn<sup>2+</sup>-binding domain in the autosomal recessive juvenile Parkinson-related E3 ligase parkin. *J Biol Chem* **284**: 14978–14986
- Hsu LJ, Sagara Y, Arroyo A, Rockenstein E, Sisk A, Mallory M, Wong J, Takenouchi T, Hashimoto M, Masliah E (2000) alpha-synuclein promotes mitochondrial deficit and oxidative stress. *Am J Pathol* **157**: 401–410
- Ibanez P, Bonnet AM, Debarges B, Lohmann E, Tison F, Pollak P, Agid Y, Durr A, Brice A (2004) Causal relation between alpha-synuclein gene duplication and familial Parkinson's disease. *Lancet* **364**: 1169–1171
- Ikeda F, Crosetto N, Dikic I (2010) What determines the specificity and outcomes of ubiquitin signaling? *Cell* **143**: 677–681
- Ikeuchi K, Marusawa H, Fujiwara M, Matsumoto Y, Endo Y, Watanabe T, Iwai A, Sakai Y, Takahashi R, Chiba T (2009) Attenuation of proteolysis-mediated cyclin E regulation by alternatively spliced Parkin in human colorectal cancers. *Int J Cancer* **125**: 2029–2035
- Imai Y, Gehrke S, Wang HQ, Takahashi R, Hasegawa K, Oota E, Lu B (2008) Phosphorylation of 4E-BP by LRRK2 affects the maintenance of dopaminergic neurons in Drosophila. *EMBO J* **27**: 2432–2443
- Imam SZ, Zhou Q, Yamamoto A, Valente AJ, Ali SF, Bains M, Roberts JL, Kahle PJ, Clark RA, Li S (2011) Novel regulation of parkin function through c-Abl-mediated tyrosine phosphorylation: implications for Parkinson's disease. *J Neurosci* **31**: 157–163
- International Parkinson Disease Genomics Consortium, Nalls MA, Plagnol V, Hernandez DG, Sharma M, Sheerin UM, Saad M, Simon-Sanchez J, Schulte C, Lesage S, Sveinbjornsdottir S, Stefansson K, Martinez M, Hardy J, Heutink P, Brice A, Gasser T, Singleton AB, Wood NW (2011) Imputation of sequence variants for identification of genetic risks for Parkinson's disease: a meta-analysis of genome-wide association studies. *Lancet* **377**: 641–649
- Irrcher I, Aleyasin H, Seifert EL, Hewitt SJ, Chhabra S, Phillips M, Lutz AK, Rousseaux MW, Bevilacqua L, Jahani-Asl A, Callaghan S, MacLaurin JG, Winklhofer KF, Rizzu P, Rippstein P, Kim RH, Chen CX, Fon EA, Slack RS, Harper ME *et al* (2010) Loss of the Parkinson's disease-linked gene DJ-1 perturbs mitochondrial dynamics. *Hum Mol Genet* **19**: 3734–3746
- Jaleel M, Nichols RJ, Deak M, Campbell DG, Gillardon F, Knebel A, Alessi DR (2007) LRRK2 phosphorylates moesin at threonine-558: characterization of how Parkinson's disease mutants affect kinase activity. *Biochem J* **405**: 307–317
- Jang A, Lee HJ, Suk JE, Jung JW, Kim KP, Lee SJ (2010) Non-classical exocytosis of alpha-synuclein is sensitive to folding states and promoted under stress conditions. *J Neurochem* **113**: 1263–1274
- Jellinger KA (2009) A critical evaluation of current staging of alpha-synuclein pathology in Lewy body disorders. *Biochim Biophys Acta* **1792**: 730–740
- Jin SM, Lazarou M, Wang C, Kane LA, Narendra DP, Youle RJ (2010) Mitochondrial membrane potential regulates PINK1 import and proteolytic destabilization by PARL. *J Cell Biol* **191**: 933–942
- Johnson BN, Berger AK, Cortese GP, Lavoie MJ (2012) The ubiquitin E3 ligase parkin regulates the proapoptotic function of Bax. *Proc Natl Acad Sci USA* **109**: 6283–6288
- Junn E, Jang WH, Zhao X, Jeong BS, Mouradian MM (2009) Mitochondrial localization of DJ-1 leads to enhanced neuroprotection. *J Neurosci Res* **87**: 123–129
- Kahle PJ, Waak J, Gasser T (2009) DJ-1 and prevention of oxidative stress in Parkinson's disease and other age-related disorders. *Free Radic Biol Med* **47**: 1354–1361
- Kamikawaji S, Ito G, Iwatsubo T (2009) Identification of the autophosphorylation sites of LRRK2. *Biochemistry* **48**: 10963–10975
- Kamp F, Beyer K (2006) Binding of alpha-synuclein affects the lipid packing in bilayers of small vesicles. *J Biol Chem* **281**: 9251–9259
- Kamp F, Exner N, Lutz AK, Wender N, Hegermann J, Brunner B, Nuscher B, Bartels T, Giese A, Beyer K, Eimer S, Winklhofer KF, Haass C (2010) Inhibition of mitochondrial fusion by alpha-synuclein is rescued by PINK1, Parkin and DJ-1. *EMBO J* **29**: 3571–3589
- Kanao T, Venderova K, Park DS, Unterman T, Lu B, Imai Y (2010) Activation of FoxO by LRRK2 induces expression of proapoptotic

- proteins and alters survival of postmitotic dopaminergic neuron in *Drosophila*. *Hum Mol Genet* **19**: 3747–3758
- Kawajiri S, Saiki S, Sato S, Sato F, Hatano T, Eguchi H, Hattori N (2010) PINK1 is recruited to mitochondria with parkin and associates with LC3 in mitophagy. *FEBS Lett* **584**: 1073–1079
- Keeney PM, Xie J, Capaldi RA, Bennett Jr JP (2006) Parkinson's disease brain mitochondrial complex I has oxidatively damaged subunits and is functionally impaired and misassembled. *J Neurosci* **26**: 5256–5264
- Khandelwal PJ, Dumanis SB, Feng LR, Maguire-Zeiss K, Rebeck G, Lashuel HA, Moussa CE (2010) Parkinson-related parkin reduces alpha-Synuclein phosphorylation in a gene transfer model. *Mol Neurodegener* **5**: 47
- Kim KY, Stevens MV, Akter MH, Rusk SE, Huang RJ, Cohen A, Noguchi A, Springer D, Bocharov AV, Eggerman TL, Suen DF, Youle RJ, Amar M, Remaley AT, Sack MN (2011) Parkin is a lipid-responsive regulator of fat uptake in mice and mutant human cells. *J Clin Invest* **121**: 3701–3712
- Kim RH, Smith PD, Aleyasin H, Hayley S, Mount MP, Pownall S, Wakeham A, You-Ten AJ, Kalia SK, Horne P, Westaway D, Lozano AM, Anisman H, Park DS, Mak TW (2005) Hypersensitivity of DJ-1-deficient mice to 1-methyl-4-phenyl-1,2,3,6-tetrahydropyridine (MPTP) and oxidative stress. *Proc Natl Acad Sci U S A* **102**: 5215–5220
- Kim Y, Park J, Kim S, Song S, Kwon SK, Lee SH, Kitada T, Kim JM, Chung J (2008) PINK1 controls mitochondrial localization of Parkin through direct phosphorylation. *Biochem Biophys Res Commun* **377**: 975–980
- Kirkin V, McEwan DG, Novak I, Dikic I (2009) A role for ubiquitin in selective autophagy. *Mol Cell* **34**: 259–269
- Kish SJ, Morito C, Hornykiewicz O (1985) Glutathione peroxidase activity in Parkinson's disease brain. *Neurosci Lett* **58**: 343–346
- Kitada T, Asakawa S, Hattori N, Matsumine H, Yamamura Y, Minoshima S, Yokochi M, Mizuno Y, Shimizu N (1998) Mutations in the parkin gene cause autosomal recessive juvenile parkinsonism. *Nature* **392**: 605–608
- Klinkenberg M, Thurow N, Gispert S, Ricciardi F, Eich F, Prehn JH, Auburger G, Kogel D (2010) Enhanced vulnerability of PARK6 patient skin fibroblasts to apoptosis induced by proteasomal stress. *Neuroscience* **166**: 422–434
- Klivenyi P, Siwek D, Gardian G, Yang L, Starkov A, Cleren C, Ferrante RJ, Kowall NW, Abeliovich A, Beal MF (2006) Mice lacking alpha-synuclein are resistant to mitochondrial toxins. *Neurobiol Dis* **21**: 541–548
- Knott AB, Perkins G, Schwarzenbacher R, Bossy-Wetzel E (2008) Mitochondrial fragmentation in neurodegeneration. *Nat Rev Neurosci* **9**: 505–518
- Ko HS, Lee Y, Shin JH, Karuppagounder SS, Gadad BS, Koleske AJ, Pletnikova O, Troncoso JC, Dawson VL, Dawson TM (2010) Phosphorylation by the c-Abl protein tyrosine kinase inhibits parkin's ubiquitination and protective function. *Proc Natl Acad Sci USA* **107**: 16691–16696
- Komander D (2009) The emerging complexity of protein ubiquitination. *Biochem Soc Trans* **37**: 937–953
- Kordower JH, Chu Y, Hauser RA, Freeman TB, Olanow CW (2008a) Lewy body-like pathology in long-term embryonic nigral transplants in Parkinson's disease. *Nat Med* **14**: 504–506
- Kordower JH, Chu Y, Hauser RA, Olanow CW, Freeman TB (2008b) Transplanted dopaminergic neurons develop PD pathologic changes: a second case report. *Mov Disord* **23**: 2303–2306
- Kraytshberg Y, Kudryavtseva E, McKee AC, Geula C, Kowall NW, Khrapko K (2006) Mitochondrial DNA deletions are abundant and cause functional impairment in aged human substantia nigra neurons. *Nat Genet* **38**: 518–520
- Kreibiehl G, Ruckerbauer S, Burbulla LF, Kieper N, Maurer B, Waak J, Wolburg H, Gizatullina Z, Gellerich FN, Voitalla D, Riess O, Kahle PJ, Proikas-Cezanne T, Kruger R (2010) Reduced basal autophagy and impaired mitochondrial dynamics due to loss of Parkinson's disease-associated protein DJ-1. *PLoS One* **5**: e9367
- Kruger R, Kuhn W, Muller T, Voitalla D, Graeber M, Kosel S, Przuntek H, Epplen JT, Schols L, Riess O (1998) Ala30Pro mutation in the gene encoding alpha-synuclein in Parkinson's disease. *Nat Genet* **18**: 106–108
- Kruse SE, Watt WC, Marcinek DJ, Kapur RP, Schenkman KA, Palmiter RD (2008) Mice with mitochondrial complex I deficiency develop a fatal encephalomyopathy. *Cell Metab* **7**: 312–320
- Kujoth GC, Hiona A, Pugh TD, Someya S, Panzer K, Wohlgenuth SE, Hofer T, Seo AY, Sullivan R, Jobling WA, Morrow JD, Van Remmen H, Sedivy JM, Yamasoba T, Tanokura M, Weindrich R, Leeuwenburgh C, Prolla TA (2005) Mitochondrial DNA mutations, oxidative stress, and apoptosis in mammalian aging. *Science* **309**: 481–484
- Langston JW, Ballard P, Tetrud JW, Irwin I (1983) Chronic Parkinsonism in humans due to a product of meperidine-analog synthesis. *Science* **219**: 979–980
- Langston JW, Forno LS, Tetrud J, Reeves AG, Kaplan JA, Karluk D (1999) Evidence of active nerve cell degeneration in the substantia nigra of humans years after 1-methyl-4-phenyl-1,2,3,6-tetrahydropyridine exposure. *Ann Neurol* **46**: 598–605
- Lannuzel A, Michel PP, Hoglinger GU, Champy P, Jousset A, Medja F, Lombes A, Darios F, Gleye C, Laurens A, Hocquemiller R, Hirsch EC, Ruberg M (2003) The mitochondrial complex I inhibitor annonacin is toxic to mesencephalic dopaminergic neurons by impairment of energy metabolism. *Neuroscience* **121**: 287–296
- Lansbury PT, Lashuel HA (2006) A century-old debate on protein aggregation and neurodegeneration enters the clinic. *Nature* **443**: 774–779
- Larsen KE, Schmitz Y, Troyer MD, Mosharov E, Dietrich P, Quazi AZ, Savalle M, Nemani V, Chaudhry FA, Edwards RH, Stefanis L, Sulzer D (2006) Alpha-synuclein overexpression in PC12 and chromaffin cells impairs catecholamine release by interfering with a late step in exocytosis. *J Neurosci* **26**: 11915–11922
- Larsson NG (2010) Somatic mitochondrial DNA mutations in mammalian aging. *Annu Rev Biochem* **79**: 683–706
- LaVoie MJ, Cortese GP, Ostaszewski BL, Schlossmacher MG (2007) The effects of oxidative stress on parkin and other E3 ligases. *J Neurochem* **103**: 2354–2368
- LaVoie MJ, Ostaszewski BL, Weihofen A, Schlossmacher MG, Selkoe DJ (2005) Dopamine covalently modifies and functionally inactivates parkin. *Nat Med* **11**: 1214–1221
- Lazarou M, Jin SM, Kane LA, Youle RJ (2012) Role of PINK1 binding to the TOM complex and alternate intracellular membranes in recruitment and activation of the E3 ligase Parkin. *Dev Cell* **22**: 320–333
- Lee BD, Shin JH, VanKampen J, Petrucelli L, West AB, Ko HS, Lee YI, Maguire-Zeiss KA, Bowers WJ, Federoff HJ, Dawson VL, Dawson TM (2010a) Inhibitors of leucine-rich repeat kinase-2 protect against models of Parkinson's disease. *Nat Med* **16**: 998–1000
- Lee HJ, Patel S, Lee SJ (2005) Intravesicular localization and exocytosis of alpha-synuclein and its aggregates. *J Neurosci* **25**: 6016–6024
- Lee JY, Nagano Y, Taylor JP, Lim KL, Yao TP (2010b) Disease-causing mutations in parkin impair mitochondrial ubiquitination, aggregation, and HDAC6-dependent mitophagy. *J Cell Biol* **189**: 671–679
- Lee SJ, Kim SJ, Kim IK, Ko J, Jeong CS, Kim GH, Park C, Kang SO, Suh PG, Lee HS, Cha SS (2003) Crystal structures of human DJ-1 and Escherichia coli Hsp31, which share an evolutionarily conserved domain. *J Biol Chem* **278**: 44552–44559
- Li JY, Englund E, Holton JL, Soulet D, Hagell P, Lees AJ, Lashley T, Quinn NP, Rehncrona S, Bjorklund A, Widner H, Revesz T, Lindvall O, Brundin P (2008) Lewy bodies in grafted neurons in subjects with Parkinson's disease suggest host-to-graft disease propagation. *Nat Med* **14**: 501–503
- Li JY, Englund E, Widner H, Rehncrona S, Bjorklund A, Lindvall O, Brundin P (2010) Characterization of Lewy body pathology in 12- and 16-year-old intrastriatal mesencephalic grafts surviving in a patient with Parkinson's disease. *Mov Disord* **25**: 1091–1096
- Li WW, Yang R, Guo JC, Ren HM, Zha XL, Cheng JS, Cai DF (2007) Localization of alpha-synuclein to mitochondria within midbrain of mice. *Neuroreport* **18**: 1543–1546
- Lin MT, Beal MF (2006) Mitochondrial dysfunction and oxidative stress in neurodegenerative diseases. *Nature* **443**: 787–795
- Lin W, Kang UJ (2008) Characterization of PINK1 processing, stability, and subcellular localization. *J Neurochem* **106**: 464–474
- Lin X, Parisiadou L, Gu XL, Wang L, Shim H, Sun L, Xie C, Long CX, Yang WJ, Ding J, Chen ZZ, Gallant PE, Tao-Cheng JH, Rudow G, Troncoso JC, Liu Z, Li Z, Cai H (2009) Leucine-rich repeat kinase 2 regulates the progression of neuropathology induced by Parkinson's-disease-related mutant alpha-synuclein. *Neuron* **64**: 807–827



- Liu G, Zhang C, Yin J, Li X, Cheng F, Li Y, Yang H, Ueda K, Chan P, Yu S (2009) alpha-Synuclein is differentially expressed in mitochondria from different rat brain regions and dose-dependently down-regulates complex I activity. *Neurosci Lett* **454**: 187–192
- Liu M, Dobson B, Glicksman MA, Yue Z, Stein RL (2010) Kinetic mechanistic studies of wild-type leucine-rich repeat kinase 2: characterization of the kinase and GTPase activities. *Biochemistry* **49**: 2008–2017
- Liu S, Sawada T, Lee S, Yu W, Silverio G, Alapatt P, Millan I, Shen A, Saxton W, Kanao T, Takahashi R, Hattori N, Imai Y, Lu B (2012) Parkinson's Disease-Associated Kinase PINK1 Regulates Miro Protein Level and Axonal Transport of Mitochondria. *PLoS Genet* **8**: e1002537
- Liu Z, Hamamichi S, Lee BD, Yang D, Ray A, Caldwell GA, Caldwell KA, Dawson TM, Smith WW, Dawson VL (2011a) Inhibitors of LRRK2 kinase attenuate neurodegeneration and Parkinson-like phenotypes in *Caenorhabditis elegans* and *Drosophila* Parkinson's disease models. *Hum Mol Genet* **20**: 3933–3942
- Liu Z, Lee J, Krummey S, Lu W, Cai H, Lenardo MJ (2011b) The kinase LRRK2 is a regulator of the transcription factor NFAT that modulates the severity of inflammatory bowel disease. *Nat Immunol* **12**: 1063–1070
- Liu Z, Wang X, Yu Y, Li X, Wang T, Jiang H, Ren Q, Jiao Y, Sawa A, Moran T, Ross CA, Montell C, Smith WW (2008) A *Drosophila* model for LRRK2-linked parkinsonism. *Proc Natl Acad Sci USA* **105**: 2693–2698
- Lo Bianco C, Schneider BL, Bauer M, Sajadi A, Brice A, Iwatsubo T, Aebischer P (2004) Lentiviral vector delivery of parkin prevents dopaminergic degeneration in an alpha-synuclein rat model of Parkinson's disease. *Proc Natl Acad Sci USA* **101**: 17510–17515
- Loeb V, Yakunin E, Saada A, Sharon R (2010) The transgenic overexpression of alpha-synuclein and not its related pathology associates with complex I inhibition. *J Biol Chem* **285**: 7334–7343
- Lucas JI, Marin I (2007) A new evolutionary paradigm for the Parkinson disease gene DJ-1. *Mol Biol Evol* **24**: 551–561
- Luk KC, Kehm VM, Zhang B, O'Brien P, Trojanowski JQ, Lee VM (2012) Intracerebral inoculation of pathological alpha-synuclein initiates a rapidly progressive neurodegenerative alpha-synucleinopathy in mice. *J Exp Med* **209**: 975–986
- Lundblad M, Decressac M, Mattsson B, Bjorklund A (2012) Impaired neurotransmission caused by overexpression of alpha-synuclein in nigral dopamine neurons. *Proc Natl Acad Sci USA* **109**: 3213–3219
- Lutz AK, Exner N, Fett ME, Schlehe JS, Kloos K, Lammermann K, Brunner B, Kurz-Drexler A, Vogel F, Reichert AS, Bouman L, Vogt-Weisenhorn D, Wurst W, Tatzelt J, Haass C, Winklhofer KF (2009) Loss of Parkin or PINK1 Function Increases Drp1-dependent Mitochondrial Fragmentation. *J Biol Chem* **284**: 22938–22951
- Mandemakers W, Morais VA, De Strooper B (2007) A cell biological perspective on mitochondrial dysfunction in Parkinson disease and other neurodegenerative diseases. *J Cell Sci* **120**: 1707–1716
- Marella M, Seo BB, Nakamaru-Ogiso E, Greenamyre JT, Matsuno-Yagi A, Yagi T (2008) Protection by the NDI1 gene against neurodegeneration in a rotenone rat model of Parkinson's disease. *PLoS One* **3**: e1433
- Martin I, Dawson VL, Dawson TM (2011) Recent advances in the genetics of Parkinson's disease. *Annu Rev Genomics Hum Genet* **12**: 301–325
- Martin LJ, Pan Y, Price AC, Sterling W, Copeland NG, Jenkins NA, Price DL, Lee MK (2006) Parkinson's disease alpha-synuclein transgenic mice develop neuronal mitochondrial degeneration and cell death. *J Neurosci* **26**: 41–50
- Matenia D, Hempp C, Timm T, Eikhof A, Mandelkow EM (2012) Microtubule affinity regulating kinase 2 (MARK2) turns PTEN-induced kinase 1 (PINK1) on at T313, a mutation site in Parkinson's disease: Effects on mitochondrial transport. *J Biol Chem* **287**: 8174–8186
- Matsuda N, Sato S, Shiba K, Okatsu K, Saisho K, Gautier CA, Sou YS, Saiki S, Kawajiri S, Sato F, Kimura M, Komatsu M, Hattori N, Tanaka K (2010) PINK1 stabilized by mitochondrial depolarization recruits Parkin to damaged mitochondria and activates latent Parkin for mitophagy. *J Cell Biol* **189**: 211–221
- Mehdi SJ, Alam MS, Batra S, Rizvi MM (2011) Allelic loss of 6q25–27, the PARKIN tumor suppressor gene locus, in cervical carcinoma. *Med Oncol* **28**: 1520–1526
- Meissner C, Lorenz H, Weihofen A, Selkoe DJ, Lemberg MK (2011) The mitochondrial intramembrane protease PARL cleaves human Pink1 to regulate Pink1 trafficking. *J Neurochem* **117**: 856–867
- Mendez I, Vinuela A, Astradsson A, Mukhida K, Hallett P, Robertson H, Tierney T, Holness R, Dagher A, Trojanowski JQ, Isacson O (2008) Dopamine neurons implanted into people with Parkinson's disease survive without pathology for 14 years. *Nat Med* **14**: 507–509
- Meulener MC, Xu K, Thomson L, Ischiropoulos H, Bonini NM (2006) Mutational analysis of DJ-1 in *Drosophila* implicates functional inactivation by oxidative damage and aging. *Proc Natl Acad Sci USA* **103**: 12517–12522
- Misko A, Jiang S, Wegorzewska I, Milbrandt J, Baloh RH (2010) Mitofusin 2 is necessary for transport of axonal mitochondria and interacts with the Miro/Milton complex. *J Neurosci* **30**: 4232–4240
- Mitsumoto A, Nakagawa Y, Takeuchi A, Okawa K, Iwamatsu A, Takanezawa Y (2001) Oxidized forms of peroxiredoxins and DJ-1 on two-dimensional gels increased in response to sublethal levels of paraquat. *Free Radic Res* **35**: 301–310
- Moore DJ (2006) Parkin: a multifaceted ubiquitin ligase. *Biochem Soc Trans* **34**: 749–753
- Morais VA, Verstreken P, Roethig A, Smet J, Snellinx A, Vanbrabant M, Haddad D, Frezza C, Mandemakers W, Vogt-Weisenhorn D, Van Coster R, Wurst W, Scorrano L, De Strooper B (2009) Parkinson's disease mutations in PINK1 result in decreased Complex I activity and deficient synaptic function. *EMBO Mol Med* **1**: 99–111
- Mortiboys H, Johansen KK, Aasly JO, Bandmann O (2010) Mitochondrial impairment in patients with Parkinson disease with the G2019S mutation in LRRK2. *Neurology* **75**: 2017–2020
- Mortiboys H, Thomas KJ, Koopman WJ, Klaffke S, Abou-Sleiman P, Olpin S, Wood NW, Willems PH, Smeitink JA, Cookson MR, Bandmann O (2008) Mitochondrial function and morphology are impaired in parkin-mutant fibroblasts. *Ann Neurol* **64**: 555–565
- Muqit MM, Abou-Sleiman PM, Saurin AT, Harvey K, Gandhi S, Deas E, Eaton S, Payne Smith MD, Venner K, Matilla A, Healy DG, Gilks WP, Lees AJ, Holton J, Revesz T, Parker PJ, Harvey RJ, Wood NW, Latchman DS (2006) Altered cleavage and localization of PINK1 to aggresomes in the presence of proteasomal stress. *J Neurochem* **98**: 156–169
- Murata H, Sakaguchi M, Jin Y, Sakaguchi Y, Futami J, Yamada H, Kataoka K, Huh NH (2011) A new cytosolic pathway from a Parkinson disease-associated kinase, BRPK/PINK1: activation of AKT via mTORC2. *J Biol Chem* **286**: 7182–7189
- Murphy MP (2009) How mitochondria produce reactive oxygen species. *Biochem J* **417**: 1–13
- Nakamura K, Nemani VM, Azarbal F, Skibinski G, Levy JM, Egami K, Munishkina L, Zhang J, Gardner B, Wakabayashi J, Sesaki H, Cheng Y, Finkbeiner S, Nussbaum RL, Masliah E, Edwards RH (2011) Direct membrane association drives mitochondrial fission by the Parkinson disease-associated protein alpha-synuclein. *J Biol Chem* **286**: 20710–20726
- Nakamura K, Nemani VM, Wallender EK, Kaehlcke K, Ott M, Edwards RH (2008) Optical reporters for the conformation of alpha-synuclein reveal a specific interaction with mitochondria. *J Neurosci* **28**: 12305–12317
- Narendra D, Kane LA, Hauser DN, Fearnley IM, Youle RJ (2010a) p62/SQSTM1 is required for Parkin-induced mitochondrial clustering but not mitophagy; VDAC1 is dispensable for both. *Autophagy* **6**: 1090–1106
- Narendra D, Tanaka A, Suen DF, Youle RJ (2008) Parkin is recruited selectively to impaired mitochondria and promotes their autophagy. *J Cell Biol* **183**: 795–803
- Narendra DP, Jin SM, Tanaka A, Suen DF, Gautier CA, Shen J, Cookson MR, Youle RJ (2010b) PINK1 is selectively stabilized on impaired mitochondria to activate Parkin. *PLoS Biol* **8**: e1000298
- Narendra DP, Kane LA, Hauser DN, Fearnley IM, Youle RJ (2010c) p62/SQSTM1 is required for Parkin-induced mitochondrial clustering but not mitophagy; VDAC1 is dispensable for both. *Autophagy* **6**: 1090–1106
- Nemani VM, Lu W, Berge V, Nakamura K, Onoa B, Lee MK, Chaudhry FA, Nicoll RA, Edwards RH (2010) Increased expression of alpha-synuclein reduces neurotransmitter release by inhibiting synaptic vesicle re-clustering after endocytosis. *Neuron* **65**: 66–79

- Ng CH, Mok SZ, Koh C, Ouyang X, Fivaz ML, Tan EK, Dawson VL, Dawson TM, Yu F, Lim KL (2009) Parkin protects against LRRK2 G2019S mutant-induced dopaminergic neurodegeneration in *Drosophila*. *J Neurosci* **29**: 11257–11262
- Nicklas WJ, Vyas I, Heikkila RE (1985) Inhibition of NADH-linked oxidation in brain mitochondria by 1-methyl-4-phenyl-pyridine, a metabolite of the neurotoxin, 1-methyl-4-phenyl-1,2,5,6-tetrahydropyridine. *Life Sci* **36**: 2503–2508
- Nuytemans K, Theuns J, Cruts M, Van Broeckhoven C (2010) Genetic etiology of Parkinson disease associated with mutations in the SNCA, PARK2, PINK1, PARK7, and LRRK2 genes: a mutation update. *Hum Mutat* **31**: 763–780
- Oettinghaus B, Licci M, Scorrano L, Frank S (2012) Less than perfect divorces: dysregulated mitochondrial fission and neurodegeneration. *Acta Neuropathol* **123**: 189–203
- Okatsu K, Saisho K, Shimanuki M, Nakada K, Shitara H, Sou YS, Kimura M, Sato S, Hattori N, Komatsu M, Tanaka K, Matsuda N (2010) p62/SQSTM1 cooperates with Parkin for perinuclear clustering of depolarized mitochondria. *Genes Cells* **15**: 887–900
- Okochi M, Walter J, Koyama A, Nakajo S, Baba M, Iwatsubo T, Meijer L, Kahle PJ, Haass C (2000) Constitutive phosphorylation of the Parkinson's disease associated alpha-synuclein. *J Biol Chem* **275**: 390–397
- Orsucci D, Caldarazzo Ienco E, Mancuso M, Siciliano G (2011) POLG1-related and other 'mitochondrial Parkinsonisms': an overview. *J Mol Neurosci* **44**: 17–24
- Orth M, Tabrizi SJ, Schapira AH, Cooper JM (2003) Alpha-synuclein expression in HEK293 cells enhances the mitochondrial sensitivity to rotenone. *Neurosci Lett* **351**: 29–32
- Paisan-Ruiz C, Jain S, Evans EW, Gilks WP, Simon J, van der Brug M, Lopez de Munain A, Aparicio S, Gil AM, Khan N, Johnson J, Martinez JR, Nicholl D, Carrera IM, Pena AS, de Silva R, Lees A, Marti-Masso JF, Perez-Tur J, Wood NW, Singleton AB (2004) Cloning of the gene containing mutations that cause PARK8-linked Parkinson's disease. *Neuron* **44**: 595–600
- Parihar MS, Parihar A, Fujita M, Hashimoto M, Ghafourifar P (2008) Mitochondrial association of alpha-synuclein causes oxidative stress. *Cell Mol Life Sci* **65**: 1272–1284
- Parisiadou L, Xie C, Cho HJ, Lin X, Gu XL, Long CX, Lobbstaal E, Baekelandt V, Taymans JM, Sun L, Cai H (2009) Phosphorylation of ezrin/radixin/moesin proteins by LRRK2 promotes the rearrangement of actin cytoskeleton in neuronal morphogenesis. *J Neurosci* **29**: 13971–13980
- Park CB, Larsson NG (2011) Mitochondrial DNA mutations in disease and aging. *J Cell Biol* **193**: 809–818
- Park J, Lee SB, Lee S, Kim Y, Song S, Kim S, Bae E, Kim J, Shong M, Kim JM, Chung J (2006) Mitochondrial dysfunction in *Drosophila* PINK1 mutants is complemented by parkin. *Nature* **441**: 1157–1161
- Park JY, Kim KS, Lee SB, Ryu JS, Chung KC, Choo YK, Jou I, Kim J, Park SM (2009) On the mechanism of internalization of alpha-synuclein into microglia: roles of ganglioside GM1 and lipid raft. *J Neurochem* **110**: 400–411
- Parker Jr. WD, Parks JK, Swerdlow RH (2008) Complex I deficiency in Parkinson's disease frontal cortex. *Brain Res* **1189**: 215–218
- Paterna JC, Leng A, Weber E, Feldon J, Bueler H (2007) DJ-1 and Parkin modulate dopamine-dependent behavior and inhibit MPTP-induced nigral dopamine neuron loss in mice. *Mol Ther* **15**: 698–704
- Pawlyk AC, Giasson BI, Sampathu DM, Perez FA, Lim KL, Dawson VL, Dawson TM, Palmiter RD, Trojanowski JQ, Lee VM (2003) Novel monoclonal antibodies demonstrate biochemical variation of brain parkin with age. *J Biol Chem* **278**: 48120–48128
- Perez FA, Curtis WR, Palmiter RD (2005) Parkin-deficient mice are not more sensitive to 6-hydroxydopamine or methamphetamine neurotoxicity. *BMC Neurosci* **6**: 71
- Petit A, Kawarai T, Paitel E, Sanjo N, Maj M, Scheid M, Chen F, Gu Y, Hasegawa H, Salehi-Rad S, Wang L, Rogaeva E, Fraser P, Robinson B, St George-Hyslop P, Tandon A (2005) Wild-type PINK1 prevents basal and induced neuronal apoptosis, a protective effect abrogated by Parkinson disease-related mutations. *J Biol Chem* **280**: 34025–34032
- Petrucelli L, O'Farrell C, Lockhart PJ, Baptista M, Kehoe K, Vink L, Choi P, Wolozin B, Farrer M, Hardy J, Cookson MR (2002) Parkin protects against the toxicity associated with mutant alpha-synuclein: proteasome dysfunction selectively affects catecholaminergic neurons. *Neuron* **36**: 1007–1019
- Picchio MC, Martin ES, Cesari R, Calin GA, Yendamuri S, Kuroki T, Pentimalli F, Sarti M, Yoder K, Kaiser LR, Finkel R, Croce CM (2004) Alterations of the tumor suppressor gene Parkin in non-small cell lung cancer. *Clin Cancer Res* **10**: 2720–2724
- Piccoli C, Sardanelli A, Scrima R, Ripoli M, Quarato G, D'Aprile A, Bellomo F, Scacco S, De Michele G, Filla A, Iuso A, Boffoli D, Capitanio N, Papa S (2008) Mitochondrial respiratory dysfunction in familial parkinsonism associated with PINK1 mutation. *Neurochem Res* **33**: 2565–2574
- Pickrell AM, Pinto M, Hida A, Moraes CT (2011) Striatal dysfunctions associated with mitochondrial DNA damage in dopaminergic neurons in a mouse model of Parkinson's disease. *J Neurosci* **31**: 17649–17658
- Pils A, Winklhofer KF (2012) Parkin, PINK1 and mitochondrial integrity: emerging concepts of mitochondrial dysfunction in Parkinson's disease. *Acta Neuropathol* **123**: 173–188
- Plun-Favreau H, Klupsch K, Moisoï N, Gandhi S, Kjaer S, Frith D, Harvey K, Deas E, Harvey RJ, McDonald N, Wood NW, Martins LM, Downward J (2007) The mitochondrial protease HtrA2 is regulated by Parkinson's disease-associated kinase PINK1. *Nat Cell Biol* **9**: 1243–1252
- Plun-Favreau H, Lewis PA, Hardy J, Martins LM, Wood NW (2010) Cancer and neurodegeneration: between the devil and the deep blue sea. *PLoS Genet* **6**: e1001257
- Polymeropoulos MH, Lavedan C, Leroy E, Ide SE, Dehejia A, Dutra A, Pike B, Root H, Rubenstein J, Boyer R, Stenroos ES, Chandrasekharappa S, Athanassiadou A, Papapetropoulos T, Johnson WG, Lazzarini AM, Duvoisin RC, Di Iorio G, Golbe LI, Nussbaum RL (1997) Mutation in the alpha-synuclein gene identified in families with Parkinson's disease. *Science* **276**: 2045–2047
- Poole AC, Thomas RE, Andrews LA, McBride HM, Whitworth AJ, Pallanck LJ (2008) The PINK1/Parkin pathway regulates mitochondrial morphology. *Proc Natl Acad Sci USA* **105**: 1638–1643
- Poulogiannis G, McIntyre RE, Dimitriadis M, Apps JR, Wilson CH, Ichimura K, Luo F, Cantley LC, Wyllie AH, Adams DJ, Arends MJ (2010) PARK2 deletions occur frequently in sporadic colorectal cancer and accelerate adenoma development in Apc mutant mice. *Proc Natl Acad Sci USA* **107**: 15145–15150
- Pridgeon JW, Olzmann JA, Chin LS, Li L (2007) PINK1 protects against oxidative stress by phosphorylating mitochondrial chaperone TRAP1. *PLoS Biol* **5**: e172
- Quintana A, Kruse SE, Kapur RP, Sanz E, Palmiter RD (2010) Complex I deficiency due to loss of Ndufs4 in the brain results in progressive encephalopathy resembling Leigh syndrome. *Proc Natl Acad Sci USA* **107**: 10996–11001
- Ramonet D, Daher JP, Lin BM, Stafa K, Kim J, Banerjee R, Westerlund M, Pletnikova O, Glauser L, Yang L, Liu Y, Swing DA, Beal MF, Troncoso JC, McCaffery JM, Jenkins NA, Copeland NG, Galter D, Thomas B, Lee MK *et al* (2011) Dopaminergic neuronal loss, reduced neurite complexity and autophagic abnormalities in transgenic mice expressing G2019S mutant LRRK2. *PLoS One* **6**: e18568
- Rathke-Hartlieb S, Kahle PJ, Neumann M, Ozmen L, Haid S, Okochi M, Haass C, Schulz JB (2001) Sensitivity to MPTP is not increased in Parkinson's disease-associated mutant alpha-synuclein transgenic mice. *J Neurochem* **77**: 1181–1184
- Reeve AK, Krishnan KJ, Turnbull D (2008) Mitochondrial DNA mutations in disease, aging, and neurodegeneration. *Ann NY Acad Sci* **1147**: 21–29
- Ren Y, Liu W, Jiang H, Jiang Q, Feng J (2005) Selective vulnerability of dopaminergic neurons to microtubule depolymerization. *J Biol Chem* **280**: 34105–34112
- Richardson JR, Caudle WM, Guillot TS, Watson JL, Nakamaru-Ogiso E, Seo BB, Sherer TB, Greenamyre JT, Yagi T, Matsuno-Yagi A, Miller GW (2007) Obligatory role for complex I inhibition in the dopaminergic neurotoxicity of 1-methyl-4-phenyl-1,2,3,6-tetrahydropyridine (MPTP). *Toxicol Sci* **95**: 196–204
- Rosen KM, Veereshwarayya V, Moussa CE, Fu Q, Goldberg MS, Schlossmacher MG, Shen J, Querfurth HW (2006) Parkin protects against mitochondrial toxins and beta-amyloid accumulation in skeletal muscle cells. *J Biol Chem* **281**: 12809–12816
- Sandebing A, Thomas KJ, Beilina A, van der Brug M, Cleland MM, Ahmad R, Miller DW, Zambano I, Cowbrano I, Cowbrano RF, Behbahani H, Cedazo-Minguez A, Cookson MR (2009) Mitochondrial alterations in PINK1 deficient cells are influenced by calcineurin-

- dependent dephosphorylation of dynamin-related protein 1. *PLoS One* **4**: e5701
- Satake W, Nakabayashi Y, Mizuta I, Hirota Y, Ito C, Kubo M, Kawaguchi T, Tsunoda T, Watanabe M, Takeda A, Tomiyama H, Nakashima K, Hasegawa K, Obata F, Yoshikawa T, Kawakami H, Sakoda S, Yamamoto M, Hattori N, Murata M *et al* (2009) Genome-wide association study identifies common variants at four loci as genetic risk factors for Parkinson's disease. *Nat Genet* **41**: 1303–1307
- Scarpulla RC (2011) Metabolic control of mitochondrial biogenesis through the PGC-1 family regulatory network. *Biochim Biophys Acta* **1813**: 1269–1278
- Schapira AH (2008) Mitochondria in the aetiology and pathogenesis of Parkinson's disease. *Lancet Neurol* **7**: 97–109
- Schapira AH, Cooper JM, Dexter D, Jenner P, Clark JB, Marsden CD (1989) Mitochondrial complex I deficiency in Parkinson's disease. *Lancet* **1**: 1269
- Schlehe JS, Lutz AK, Pilsel A, Lammermann K, Grgur K, Henn IH, Tatzelt J, Winklhofer KF (2008) Aberrant folding of pathogenic Parkin mutants: aggregation versus degradation. *J Biol Chem* **283**: 13771–13779
- Schluter OM, Fornai F, Alessandri MG, Takamori S, Geppert M, Jahn R, Sudhof TC (2003) Role of alpha-synuclein in 1-methyl-4-phenyl-1,2,3,6-tetrahydropyridine-induced parkinsonism in mice. *Neuroscience* **118**: 985–1002
- Schon EA, Przedborski S (2011) Mitochondria: the next (neurode)-generation. *Neuron* **70**: 1033–1053
- Seibler P, Graziotto J, Jeong H, Simunovic F, Klein C, Krainc D (2011) Mitochondrial Parkin recruitment is impaired in neurons derived from mutant PINK1 induced pluripotent stem cells. *J Neurosci* **31**: 5970–5976
- Sen S, Webber PJ, West AB (2009) Dependence of leucine-rich repeat kinase 2 (LRRK2) kinase activity on dimerization. *J Biol Chem* **284**: 36346–36356
- Seo BB, Nakamaru-Ogiso E, Flotte TR, Matsuno-Yagi A, Yagi T (2006) *In vivo* complementation of complex I by the yeast Ndi1 enzyme. Possible application for treatment of Parkinson disease. *J Biol Chem* **281**: 14250–14255
- Sha D, Chin LS, Li L (2010) Phosphorylation of parkin by Parkinson disease-linked kinase PINK1 activates parkin E3 ligase function and NF-kappaB signaling. *Hum Mol Genet* **19**: 352–363
- Sharma M, Burre J, Sudhof TC (2011) CSPalpha promotes SNARE-complex assembly by chaperoning SNAP-25 during synaptic activity. *Nat Cell Biol* **13**: 30–39
- Shavali S, Brown-Borg HM, Ebadi M, Porter J (2008) Mitochondrial localization of alpha-synuclein protein in alpha-synuclein overexpressing cells. *Neurosci Lett* **439**: 125–128
- Sherer TB, Betarbet R, Testa CM, Seo BB, Richardson JR, Kim JH, Miller GW, Yagi T, Matsuno-Yagi A, Greenamyre JT (2003) Mechanism of toxicity in rotenone models of Parkinson's disease. *J Neurosci* **23**: 10756–10764
- Shi G, Lee JR, Grimes DA, Racacho L, Ye D, Yang H, Ross OA, Farrer M, McQuibban GA, Bulman DE (2011) Functional alteration of PARG contributes to mitochondrial dysregulation in Parkinson's disease. *Hum Mol Genet* **20**: 1966–1974
- Shiba K, Arai T, Sato S, Kubo S, Ohba Y, Mizuno Y, Hattori N (2009) Parkin stabilizes PINK1 through direct interaction. *Biochem Biophys Res Commun* **383**: 331–335
- Shimura H, Hattori N, Kubo S, Mizuno Y, Asakawa S, Minoshima S, Shimizu N, Iwai K, Chiba T, Tanaka K, Suzuki T (2000) Familial Parkinson disease gene product, parkin, is a ubiquitin-protein ligase. *Nat Genet* **25**: 302–305
- Shin JH, Ko HS, Kang H, Lee Y, Lee YI, Pletinkova O, Troconso JC, Dawson VL, Dawson TM (2011) PARIS (ZNF746) repression of PGC-1alpha contributes to neurodegeneration in Parkinson's disease. *Cell* **144**: 689–702
- Shulman JM, De Jager PL, Feany MB (2011) Parkinson's disease: genetics and pathogenesis. *Annu Rev Pathol* **6**: 193–222
- Silvestri L, Caputo V, Bellacchio E, Atorino L, Dallapiccola B, Valente EM, Casari G (2005) Mitochondrial import and enzymatic activity of PINK1 mutants associated to recessive parkinsonism. *Hum Mol Genet* **14**: 3477–3492
- Simon-Sanchez J, Schulte C, Bras JM, Sharma M, Gibbs JR, Berg D, Pisan-Ruiz C, Lichtner P, Scholz SW, Hernandez DG, Kruger R, Federoff M, Klein C, Goate A, Perlmutter J, Bonin M, Nalls MA, Illig T, Gieger C, Houlden H *et al* (2009) Genome-wide associa-
- tion study reveals genetic risk underlying Parkinson's disease. *Nat Genet* **41**: 1308–1312
- Singleton AB, Farrer M, Johnson J, Singleton A, Hague S, Kachergus J, Hulihan M, Peuralinna T, Dutra A, Nussbaum R, Lincoln S, Crawley A, Hanson M, Maraganore D, Adler C, Cookson MR, Muentner M, Baptista M, Miller D, Blacato J *et al* (2003) alpha-Synuclein locus triplication causes Parkinson's disease. *Science* **302**: 841
- Smith WW, Pei Z, Jiang H, Dawson VL, Dawson TM, Ross CA (2006) Kinase activity of mutant LRRK2 mediates neuronal toxicity. *Nat Neurosci* **9**: 1231–1233
- Song DD, Shults CW, Sisk A, Rockenstein E, Masliah E (2004) Enhanced substantia nigra mitochondrial pathology in human alpha-synuclein transgenic mice after treatment with MPTP. *Exp Neurol* **186**: 158–172
- Soubannier V, McBride HM (2009) Positioning mitochondrial plasticity within cellular signaling cascades. *Biochim Biophys Acta* **1793**: 154–170
- Spillantini MG, Schmidt ML, Lee VM, Trojanowski JQ, Jakes R, Goedert M (1997) Alpha-synuclein in Lewy bodies. *Nature* **388**: 839–840
- Sriram SR, Li X, Ko HS, Chung KK, Wong E, Lim KL, Dawson VL, Dawson TM (2005) Familial-associated mutations differentially disrupt the solubility, localization, binding and ubiquitination properties of parkin. *Hum Mol Genet* **14**: 2571–2586
- Stafa K, Trancikova A, Webber PJ, Glauser L, West AB, Moore DJ (2012) GTPase activity and neuronal toxicity of Parkinson's disease-associated LRRK2 is regulated by ArfGAP1. *PLoS Genet* **8**: e1002526
- Starkov AA (2008) The role of mitochondria in reactive oxygen species metabolism and signaling. *Ann NY Acad Sci* **1147**: 37–52
- Staropoli JF, McDermott C, Martinat C, Schulman B, Demireva E, Abeliovich A (2003) Parkin is a component of an SCF-like ubiquitin ligase complex and protects postmitotic neurons from kainate excitotoxicity. *Neuron* **37**: 735–749
- Steiner JA, Angot E, Brundin P (2011) A deadly spread: cellular mechanisms of alpha-synuclein transfer. *Cell Death Differ* **18**: 1425–1433
- Sterky FH, Hoffman AF, Milenkovic D, Bao B, Paganelli A, Edgar D, Wibom R, Lupica CR, Olson L, Larsson NG (2012) Altered dopamine metabolism and increased vulnerability to MPTP in mice with partial deficiency of mitochondrial complex I in dopamine neurons. *Hum Mol Genet* **21**: 1078–1089
- Sterky FH, Lee S, Wibom R, Olson L, Larsson NG (2011) Impaired mitochondrial transport and Parkin-independent degeneration of respiratory chain-deficient dopamine neurons *in vivo*. *Proc Natl Acad Sci USA* **108**: 12937–12942
- Stichel CC, Zhu XR, Bader V, Linnartz B, Schmidt S, Lubbert H (2007) Mono- and double-mutant mouse models of Parkinson's disease display severe mitochondrial damage. *Hum Mol Genet* **16**: 2377–2393
- Su LJ, Auluck PK, Outeiro TF, Yeager-Lotem E, Kritzer JA, Tardiff DF, Strathearn KE, Liu F, Cao S, Hamamichi S, Hill KJ, Caldwell KA, Bell GW, Fraenkel E, Cooper AA, Caldwell GA, McCaffery JM, Rochet JC, Lindquist S (2010) Compounds from an unbiased chemical screen reverse both ER-to-Golgi trafficking defects and mitochondrial dysfunction in Parkinson's disease models. *Dis Model Mech* **3**: 194–208
- Suen DF, Narendra DP, Tanaka A, Manfredi G, Youle RJ (2010) Parkin overexpression selects against a deleterious mtDNA mutation in heteroplasmic cybrid cells. *Proc Natl Acad Sci USA* **107**: 11835–11840
- Sulzer D (2010) Clues to how alpha-synuclein damages neurons in Parkinson's disease. *Mov Disord* **25**(Suppl 1): S27–S31
- Sung JY, Kim J, Paik SR, Park JH, Ahn YS, Chung KC (2001) Induction of neuronal cell death by Rab5A-dependent endocytosis of alpha-synuclein. *J Biol Chem* **276**: 27441–27448
- Taira T, Saito Y, Niki T, Iguchi-Arigo SM, Takahashi K, Ariga H (2004) DJ-1 has a role in antioxidative stress to prevent cell death. *EMBO Rep* **5**: 213–218
- Tanaka A, Cleland MM, Xu S, Narendra DP, Suen DF, Karbowski M, Youle RJ (2010) Proteasome and p97 mediate mitophagy and degradation of mitofusins induced by Parkin. *J Cell Biol* **191**: 1367–1380
- Tay SP, Yeo CW, Chai C, Chua PJ, Tan HM, Ang AX, Yip DL, Sung JX, Tan PH, Bay BH, Wong SH, Tang C, Tan JM, Lim KL (2010) Parkin

- enhances the expression of cyclin-dependent kinase 6 and negatively regulates the proliferation of breast cancer cells. *J Biol Chem* **285**: 29231–29238
- Thomas B, von Coelln R, Mandir AS, Trinkaus DB, Farah MH, Leong Lim K, Calingasan NY, Flint Beal M, Dawson VL, Dawson TM (2007) MPTP and DSP-4 susceptibility of substantia nigra and locus coeruleus catecholaminergic neurons in mice is independent of parkin activity. *Neurobiol Dis* **26**: 312–322
- Thomas KJ, McCoy MK, Blackinton J, Beilina A, van der Brug M, Sandebring A, Miller D, Maric D, Cedazo-Minguez A, Cookson MR (2011) DJ-1 acts in parallel to the PINK1/parkin pathway to control mitochondrial function and autophagy. *Hum Mol Genet* **20**: 40–50
- Tofaris GK, Garcia Reitböck P, Humby T, Lambourne SL, O'Connell M, Ghetti B, Gossage H, Emson PC, Wilkinson LS, Goedert M, Spillantini MG (2006) Pathological changes in dopaminergic nerve cells of the substantia nigra and olfactory bulb in mice transgenic for truncated human alpha-synuclein(1–120): implications for Lewy body disorders. *J Neurosci* **26**: 3942–3950
- Trifunovic A, Hansson A, Wredenberg A, Rovio AT, Dufour E, Khvorostov I, Spelbrink JN, Wibom R, Jacobs HT, Larsson NG (2005) Somatic mtDNA mutations cause aging phenotypes without affecting reactive oxygen species production. *Proc Natl Acad Sci USA* **102**: 17993–17998
- Trifunovic A, Wredenberg A, Falkenberg M, Spelbrink JN, Rovio AT, Bruder CE, Bohlooly YM, Gidlof S, Oldfors A, Wibom R, Tornell J, Jacobs HT, Larsson NG (2004) Premature ageing in mice expressing defective mitochondrial DNA polymerase. *Nature* **429**: 417–423
- Tsika E, Moore DJ (2012) Mechanisms of LRRK2-mediated neurodegeneration. *Curr Neurol Neurosci Rep* **12**: 251–260
- Twig G, Elorza A, Molina AJ, Mohamed H, Wikstrom JD, Walzer G, Stiles L, Haigh SE, Katz S, Las G, Alroy J, Wu M, Py BF, Yuan J, Deeney JT, Corkey BE, Shirihai OS (2008) Fission and selective fusion govern mitochondrial segregation and elimination by autophagy. *EMBO J* **27**: 433–446
- Um JW, Stichel-Gunkel C, Lubbert H, Lee G, Chung KC (2009) Molecular interaction between parkin and PINK1 in mammalian neuronal cells. *Mol Cell Neurosci* **40**: 421–432
- Uversky VN (2010) Mysterious oligomerization of the amyloidogenic proteins. *FEBS J* **277**: 2940–2953
- Valente EM, Abou-Sleiman PM, Caputo V, Muqit MM, Harvey K, Gispert S, Ali Z, Del Turco D, Bentivoglio AR, Healy DG, Albanese A, Nussbaum R, Gonzalez-Maldonado R, Deller T, Salvi S, Cortelli P, Gilks WP, Latchman DS, Harvey RJ, Dallapiccola B *et al* (2004) Hereditary early-onset Parkinson's disease caused by mutations in PINK1. *Science* **304**: 1158–1160
- Van Humbeek C, Cornelissen T, Hofkens H, Mandemakers W, Gevaert K, De Strooper B, Vandenberghe W (2011) Parkin interacts with ambral to induce mitophagy. *J Neurosci* **31**: 10249–10261
- Van Laar VS, Arnold B, Cassidy SJ, Chu CT, Burton EA, Berman SB (2011) Bioenergetics of neurons inhibit the translocation response of Parkin following rapid mitochondrial depolarization. *Hum Mol Genet* **20**: 927–940
- Van Laar VS, Berman SB (2009) Mitochondrial dynamics in Parkinson's disease. *Exp Neurol* **218**: 247–256
- Vander Heiden MG, Cantley LC, Thompson CB (2009) Understanding the Warburg effect: the metabolic requirements of cell proliferation. *Science* **324**: 1029–1033
- Veeriah S, Taylor BS, Meng S, Fang F, Yilmaz E, Vivanco I, Janakiraman M, Schultz N, Hanrahan AJ, Pao W, Ladanyi M, Sander C, Heguy A, Holland EC, Paty PB, Mischel PS, Liao L, Cloughesy TF, Mellinghoff IK, Solit DB *et al* (2010) Somatic mutations of the Parkinson's disease-associated gene PARK2 in glioblastoma and other human malignancies. *Nat Genet* **42**: 77–82
- Vekrellis K, Xilouri M, Emmanouilidou E, Rideout HJ, Stefanis L (2011) Pathological roles of alpha-synuclein in neurological disorders. *Lancet Neurol* **10**: 1015–1025
- Venda LL, Cragg SJ, Buchman VL, Wade-Martins R (2010) alpha-Synuclein and dopamine at the crossroads of Parkinson's disease. *Trends Neurosci* **33**: 559–568
- Vila M, Ramonet D, Perier C (2008) Mitochondrial alterations in Parkinson's disease: new clues. *J Neurochem* **107**: 317–328
- Vilain S, Esposito G, Haddad D, Schaap O, Dobrev MP, Vos M, Van Meensel S, Morais VA, De Strooper B, Verstreken P (2012) The yeast complex I equivalent NADH dehydrogenase rescues pink1 mutants. *PLoS Genet* **8**: e1002456
- Vives-Bauza C, Zhou C, Huang Y, Cui M, de Vries RL, Kim J, May J, Tocilescu MA, Liu W, Ko HS, Magrane J, Moore DJ, Dawson VL, Grailhe R, Dawson TM, Li C, Tieu K, Przedborski S (2010) PINK1-dependent recruitment of Parkin to mitochondria in mitophagy. *Proc Natl Acad Sci USA* **107**: 378–383
- Volles MJ, Lansbury Jr. PT (2003) Zeroing in on the pathogenic form of alpha-synuclein and its mechanism of neurotoxicity in Parkinson's disease. *Biochemistry* **42**: 7871–7878
- Volpicelli-Daley LA, Luk KC, Patel TP, Tanik SA, Riddle DM, Stieber A, Meaney DF, Trojanowski JQ, Lee VM (2011) Exogenous alpha-Synuclein Fibrils Induce Lewy Body Pathology Leading to Synaptic Dysfunction and Neuron Death. *Neuron* **72**: 57–71
- Vos M, Esposito G, Edirisinghe JN, Vilain S, Haddad DM, Slabbaert JR, Van Meensel S, Schaap O, De Strooper B, Meganathan R, Morais VA, Verstreken P (2012) Vitamin K2 is a mitochondrial electron carrier that rescues pink1 deficiency. *Science* **336**: 1306–1310
- Wang C, Ko HS, Thomas B, Tsang F, Chew KC, Tay SP, Ho MW, Lim TM, Soong TW, Pletnikova O, Troncoso J, Dawson VL, Dawson TM, Lim KL (2005a) Stress-induced alterations in parkin solubility promote parkin aggregation and compromise parkin's protective function. *Hum Mol Genet* **14**: 3885–3897
- Wang C, Tan JM, Ho MW, Zaiden N, Wong SH, Chew CL, Eng PW, Lim TM, Dawson TM, Lim KL (2005b) Alterations in the solubility and intracellular localization of parkin by several familial Parkinson's disease-linked point mutations. *J Neurochem* **93**: 422–431
- Wang F, Denison S, Lai JP, Philips LA, Montoya D, Kock N, Schule B, Klein C, Shridhar V, Roberts LR, Smith DI (2004) Parkin gene alterations in hepatocellular carcinoma. *Genes Chromosomes Cancer* **40**: 85–96
- Wang H, Song P, Du L, Tian W, Yue W, Liu M, Li D, Wang B, Zhu Y, Cao C, Zhou J, Chen Q (2011a) Parkin ubiquitinates Drp1 for proteasome-dependent degradation: implication of dysregulated mitochondrial dynamics in Parkinson disease. *J Biol Chem* **286**: 11649–11658
- Wang HL, Chou AH, Wu AS, Chen SY, Weng YH, Kao YC, Yeh TH, Chu PJ, Lu CS (2011b) PARK6/PINK1 mutants are defective in maintaining mitochondrial membrane potential and inhibiting ROS formation of substantia nigra dopaminergic neurons. *Biochim Biophys Acta* **1812**: 674–684
- Wang J, Silva JP, Gustafsson CM, Rustin P, Larsson NG (2001) Increased *in vivo* apoptosis in cells lacking mitochondrial DNA gene expression. *Proc Natl Acad Sci USA* **98**: 4038–4043
- Wang W, Perovic I, Chittiluru J, Kaganovich A, Nguyen LT, Liao J, Auclair JR, Johnson D, Landeru A, Simorellis AK, Ju S, Cookson MR, Asturias FJ, Agar JN, Webb BN, Kang C, Ringe D, Petsko GA, Pochapsky TC, Hoang QQ (2011c) A soluble alpha-synuclein construct forms a dynamic tetramer. *Proc Natl Acad Sci USA* **108**: 17797–17802
- Wang X, Winter D, Ashrafi G, Schlehe J, Wong YL, Selkoe D, Rice S, Steen J, LaVoie MJ, Schwarz TL (2011d) PINK1 and Parkin target Miro for phosphorylation and degradation to arrest mitochondrial motility. *Cell* **147**: 893–906
- Wang X, Yan MH, Fujioka H, Liu J, Wilson-Delfosse A, Chen SG, Perry G, Casadesus G, Zhu X (2012) LRRK2 regulates mitochondrial dynamics and function through direct interaction with DLP1. *Hum Mol Genet* **21**: 1931–1944
- Waxman EA, Giasson BI (2009) Molecular mechanisms of alpha-synuclein neurodegeneration. *Biochim Biophys Acta* **1792**: 616–624
- Webber PJ, Smith AD, Sen S, Renfrow MB, Mobley JA, West AB (2011) Autophosphorylation in the leucine-rich repeat kinase 2 (LRRK2) GTPase domain modifies kinase and GTP-binding activities. *J Mol Biol* **412**: 94–110
- Weihofen A, Thomas KJ, Ostaszewski BL, Cookson MR, Selkoe DJ (2009) Pink1 forms a multiprotein complex with Miro and Milton, linking Pink1 function to mitochondrial trafficking. *Biochemistry* **48**: 2045–2052
- Wenzel DM, Lissounov A, Brzovic PS, Klevit RE (2011) UBCH7 reactivity profile reveals parkin and HHARI to be RING/HECT hybrids. *Nature* **474**: 105–108
- West AB, Kapatios G, O'Farrell C, Gonzalez-de-Chavez F, Chiu K, Farrer MJ, Maidment NT (2004) N-myc regulates parkin expression. *J Biol Chem* **279**: 28896–28902

- West AB, Moore DJ, Biskup S, Bugayenko A, Smith WW, Ross CA, Dawson VL, Dawson TM (2005) Parkinson's disease-associated mutations in leucine-rich repeat kinase 2 augment kinase activity. *Proc Natl Acad Sci USA* **102**: 16842–16847
- West AB, Moore DJ, Choi C, Andrabi SA, Li X, Dikeman D, Biskup S, Zhang Z, Lim KL, Dawson VL, Dawson TM (2007) Parkinson's disease-associated mutations in LRRK2 link enhanced GTP-binding and kinase activities to neuronal toxicity. *Hum Mol Genet* **16**: 223–232
- Westermann B (2010) Mitochondrial fusion and fission in cell life and death. *Nat Rev Mol Cell Biol* **11**: 872–884
- Whitworth AJ, Lee JR, Ho VM, Flick R, Chowdhury R, McQuibban GA (2008) Rhomboid-7 and HtrA2/Omi act in a common pathway with the Parkinson's disease factors Pink1 and Parkin. *Dis Model Mech* **1**: 168–174 discussion 173
- Wilson MA, Collins JL, Hod Y, Ringe D, Petsko GA (2003) The 1.1-Å resolution crystal structure of DJ-1, the protein mutated in autosomal recessive early onset Parkinson's disease. *Proc Natl Acad Sci USA* **100**: 9256–9261
- Winklhofer KF, Haass C (2010) Mitochondrial dysfunction in Parkinson's disease. *Biochim Biophys Acta* **1802**: 29–44
- Winklhofer KF, Henn IH, Kay-Jackson PC, Heller U, Tatzelt J (2003) Inactivation of parkin by oxidative stress and C-terminal truncations: a protective role of molecular chaperones. *J Biol Chem* **278**: 47199–47208
- Winklhofer KF, Tatzelt J, Haass C (2008) The two faces of protein misfolding: gain- and loss-of-function in neurodegenerative diseases. *EMBO J* **27**: 336–349
- Winslow AR, Chen CW, Corrochano S, Acevedo-Arozena A, Gordon DE, Peden AA, Lichtenberg M, Menzies FM, Ravikumar B, Imarisio S, Brown S, O'Kane CJ, Rubinsztein DC (2010) alpha-Synuclein impairs macroautophagy: implications for Parkinson's disease. *J Cell Biol* **190**: 1023–1037
- Wong ES, Tan JM, Wang C, Zhang Z, Tay SP, Zaiden N, Ko HS, Dawson VL, Dawson TM, Lim KL (2007) Relative sensitivity of parkin and other cysteine-containing enzymes to stress-induced solubility alterations. *J Biol Chem* **282**: 12310–12318
- Wood-Kaczmar A, Gandhi S, Yao Z, Abramov AY, Miljan EA, Keen G, Stanyer L, Hargreaves I, Klupsch K, Deas E, Downward J, Mansfield L, Jat P, Taylor J, Heales S, Duchon MR, Latchman D, Tabrizi SJ, Wood NW (2008) PINK1 is necessary for long term survival and mitochondrial function in human dopaminergic neurons. *PLoS One* **3**: e2455
- Xiong H, Wang D, Chen L, Choo YS, Ma H, Tang C, Xia K, Jiang W, Ronai Z, Zhuang X, Zhang Z (2009) Parkin, PINK1, and DJ-1 form a ubiquitin E3 ligase complex promoting unfolded protein degradation. *J Clin Invest* **119**: 650–660
- Xiong Y, Yuan C, Chen R, Dawson TM, Dawson VL (2012) ArfGAP1 Is a GTPase activating protein for LRRK2: reciprocal regulation of ArfGAP1 by LRRK2. *J Neurosci* **32**: 3877–3886
- Yadava N, Nicholls DG (2007) Spare respiratory capacity rather than oxidative stress regulates glutamate excitotoxicity after partial respiratory inhibition of mitochondrial complex I with rotenone. *J Neurosci* **27**: 7310–7317
- Yang Y, Gehrke S, Haque ME, Imai Y, Kosek J, Yang L, Beal MF, Nishimura I, Wakamatsu K, Ito S, Takahashi R, Lu B (2005) Inactivation of Drosophila DJ-1 leads to impairments of oxidative stress response and phosphatidylinositol 3-kinase/Akt signaling. *Proc Natl Acad Sci USA* **102**: 13670–13675
- Yang Y, Gehrke S, Imai Y, Huang Z, Ouyang Y, Wang JW, Yang L, Beal MF, Vogel H, Lu B (2006) Mitochondrial pathology and muscle and dopaminergic neuron degeneration caused by inactivation of Drosophila Pink1 is rescued by Parkin. *Proc Natl Acad Sci USA* **103**: 10793–10798
- Yang Y, Nishimura I, Imai Y, Takahashi R, Lu B (2003) Parkin suppresses dopaminergic neuron-selective neurotoxicity induced by Pael-R in Drosophila. *Neuron* **37**: 911–924
- Yang Y, Ouyang Y, Yang L, Beal MF, McQuibban A, Vogel H, Lu B (2008) Pink1 regulates mitochondrial dynamics through interaction with the fission/fusion machinery. *Proc Natl Acad Sci USA* **105**: 7070–7075
- Yao D, Gu Z, Nakamura T, Shi ZQ, Ma Y, Gaston B, Palmer LA, Rockenstein EM, Zhang Z, Masliah E, Uehara T, Lipton SA (2004) Nitrosative stress linked to sporadic Parkinson's disease: S-nitrosylation of parkin regulates its E3 ubiquitin ligase activity. *Proc Natl Acad Sci USA* **101**: 10810–10814
- Yasuda T, Miyachi S, Kitagawa R, Wada K, Nihira T, Ren YR, Hirai Y, Agetama N, Terao K, Shimada T, Takada M, Mizuno Y, Mochizuki H (2007) Neuronal specificity of alpha-synuclein toxicity and effect of Parkin co-expression in primates. *Neuroscience* **144**: 743–753
- Yavich L, Tanila H, Vepsäläinen S, Jakala P (2004) Role of alpha-synuclein in presynaptic dopamine recruitment. *J Neurosci* **24**: 11165–11170
- Yeo CW, Ng FS, Chai C, Tan J, Koh GR, Yuk Kien C, Koh LW, Foong CS, Sandanaraj E, Holbrook JD, Ang BT, Takahashi R, Tang C, Lim KL (2012) Parkin pathway activation mitigates glioma cell proliferation and predicts patient survival. *Cancer Res* **72**: 2543–2553
- Yoshii SR, Kishi C, Ishihara N, Mizushima N (2011) Parkin mediates proteasome-dependent protein degradation and rupture of the outer mitochondrial membrane. *J Biol Chem* **286**: 19630–19640
- Yuan XL, Guo JF, Shi ZH, Xiao ZQ, Yan XX, Zhao BL, Tang BS (2010) R492X mutation in PTEN-induced putative kinase 1 induced cellular mitochondrial dysfunction and oxidative stress. *Brain Res* **1351**: 229–237
- Zach S, Felk S, Gillardon F (2010) Signal transduction protein array analysis links LRRK2 to Ste20 kinases and PKC zeta that modulate neuronal plasticity. *PLoS One* **5**: e13191
- Zarranz JJ, Alegre J, Gomez-Esteban JC, Lezcano E, Ros R, Ampuero I, Vidal L, Hoenicka J, Rodriguez O, Atares B, Llorens V, Gomez Tortosa E, del Ser T, Munoz DG, de Yebenes JG (2004) The new mutation, E46K, of alpha-synuclein causes Parkinson and Lewy body dementia. *Ann Neurol* **55**: 164–173
- Zhang C, Lin M, Wu R, Wang X, Yang B, Levine AJ, Hu W, Feng Z (2011) Parkin, a p53 target gene, mediates the role of p53 in glucose metabolism and the Warburg effect. *Proc Natl Acad Sci USA* **108**: 16259–16264
- Zhang L, Shimoji M, Thomas B, Moore DJ, Yu SW, Marupudi NI, Torp R, Torgner IA, Ottersen OP, Dawson TM, Dawson VL (2005) Mitochondrial localization of the Parkinson's disease related protein DJ-1: implications for pathogenesis. *Hum Mol Genet* **14**: 2063–2073
- Zhang L, Zhang C, Zhu Y, Cai Q, Chan P, Ueda K, Yu S, Yang H (2008) Semi-quantitative analysis of alpha-synuclein in subcellular pools of rat brain neurons: an immunogold electron microscopic study using a C-terminal specific monoclonal antibody. *Brain Res* **1244**: 40–52
- Zhang Y, Gao J, Chung KK, Huang H, Dawson VL, Dawson TM (2000) Parkin functions as an E2-dependent ubiquitin-protein ligase and promotes the degradation of the synaptic vesicle-associated protein, CDCrel-1. *Proc Natl Acad Sci USA* **97**: 13354–13359
- Zimprich A, Biskup S, Leitner P, Lichtner P, Farrer M, Lincoln S, Kachergus J, Hulihan M, Uitti RJ, Calne DB, Stoessl AJ, Pfeiffer RF, Patenge N, Carbajal IC, Vieregge P, Asmus F, Muller-Mysok B, Dickson DW, Meitinger T, Strom TM *et al* (2004) Mutations in LRRK2 cause autosomal-dominant parkinsonism with pleomorphic pathology. *Neuron* **44**: 601–607
- Ziviani E, Tao RN, Whitworth AJ (2010) Drosophila parkin requires PINK1 for mitochondrial translocation and ubiquitinates mitofusin. *Proc Natl Acad Sci USA* **107**: 5018–5023
- Zuchner S, Mersiyanova IV, Muglia M, Bissar-Tadmouri N, Rochelle J, Dadali EL, Zappia M, Nelis E, Patitucci A, Senderek J, Parman Y, Evgrafov O, Jonghe PD, Takahashi Y, Tsuji S, Pericak-Vance MA, Quattrone A, Battaloglu E, Polyakov AV, Timmerman V *et al* (2004) Mutations in the mitochondrial GTPase mitofusin 2 cause Charcot-Marie-Tooth neuropathy type 2A. *Nat Genet* **36**: 449–451