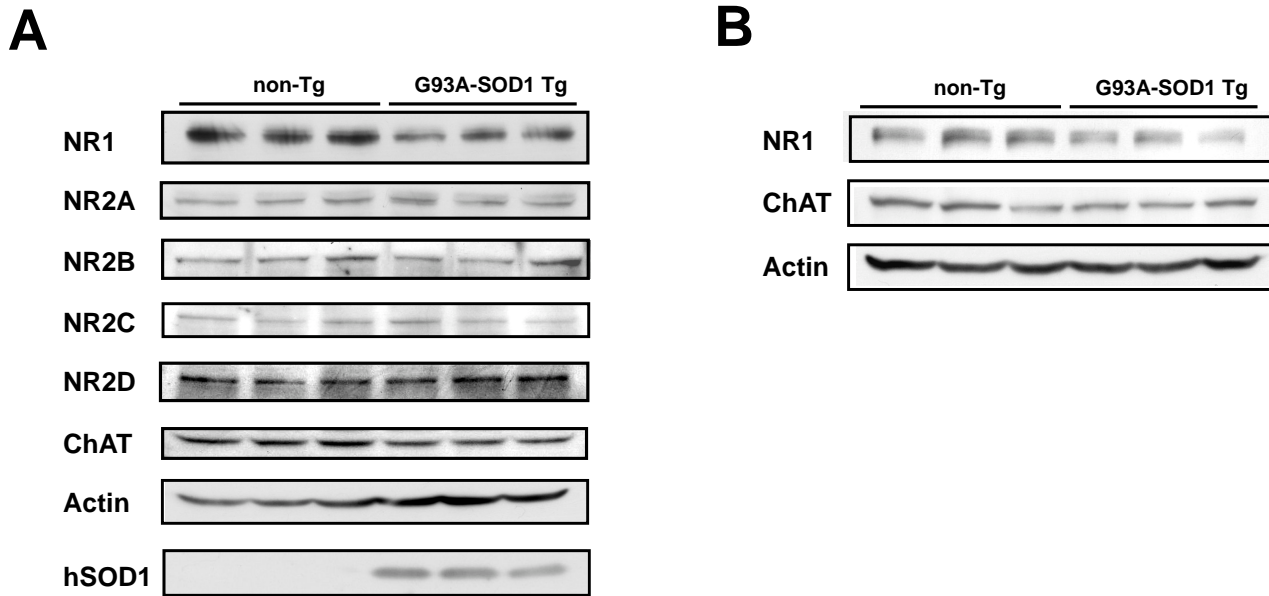


## Supplementary Figure S6



**Figure S6** Tissue expression levels of NMDA receptor subunits in spinal cords. (A) Immunoblot analysis of lysates from spinal cords from non-Tg and ALS mice at 3 w was performed with antibodies to NMDA receptor subunits: NR1, NR2A, NR2B, NR2C, NR2D; ChAT, actin, and human SOD1(hSOD1) (N = 3). (B) The NR1 subunit remained downregulated in spinal cords of ALS mice at 7 w.