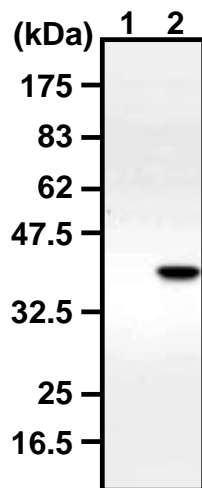
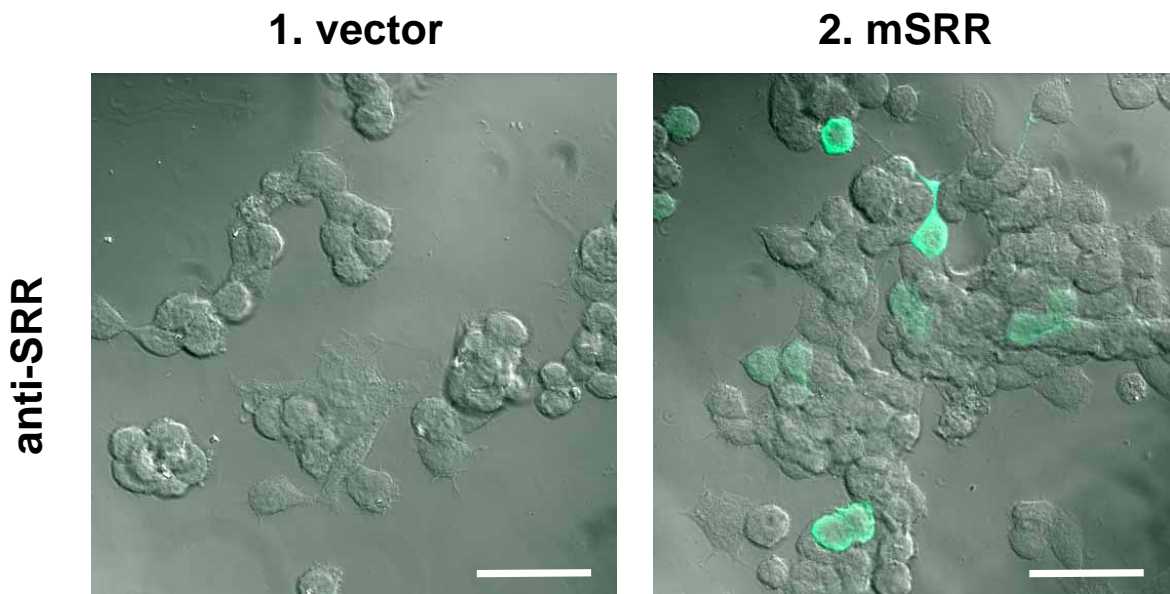


## Supplementary Figure S2

**A**



**B**



**Figure S2** Recognition of SRR with anti-SRR antibody.

(A) Immunoblot analysis of NSC34 cells transiently transfected with a vector control (1) and a mouse serine racemase (mSRR)-encoding vector (2) showed specific recognition of mSRR by anti-SRR antibody.

(B) Recognition of SRR was also confirmed by IF analysis of NSC34 cells expressed with mSRR. Scale bars, 50 μm.