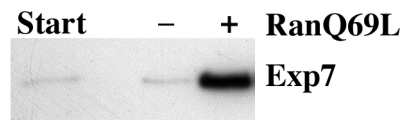
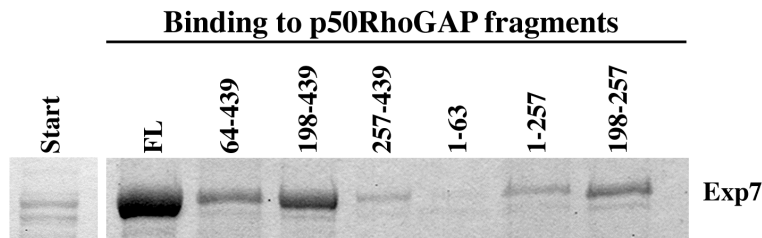
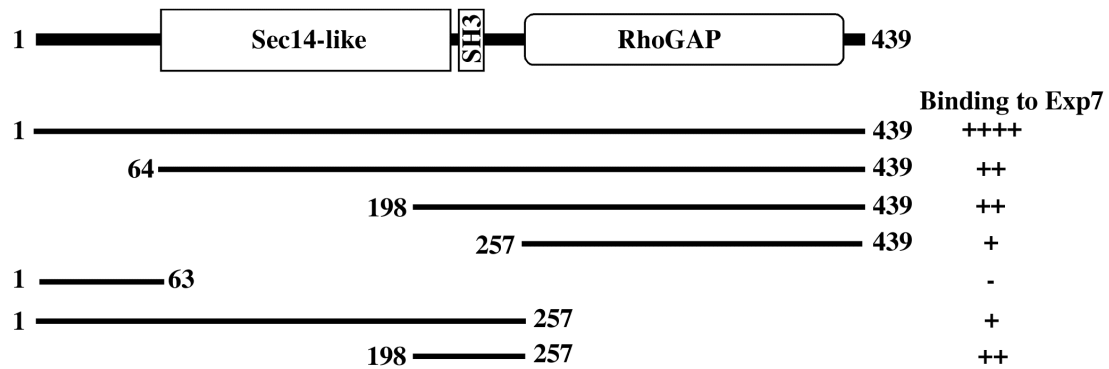


**Binding from HeLa extract to human eIF1**



**Supplementary Figure 1.** Exp7 was bound from a cytosolic HeLa cell extract to immobilised human eIF1. Where indicated, 5  $\mu$ M GTP  $\cdot$  RanQ69L had been added. Bound Exp7 was detected by immunoblot. The binding experiment was analogous to the one described in Fig. 9C.

**A****B**

**Supplementary Figure 2A.** Recombinant Exp7 was bound from an *E. coli* lysate to immobilised full length p50RhoGAP (FL) or indicated p50RhoGAP fragments. Bound Exp7 was detected by Coomassie staining. The binding experiment was in the presence of 5  $\mu$ M GTP•RanQ69L and analogous to the one described in Fig. 10.

**(B)** Schematic representation for the domain structure of p50RhoGAP. The Sec14-like domain comprises residues 64-218; the SH3-domain residues 224-238 and the RhoGAP-domain residues 257-428. p50RhoGAP fragments used in panel A (black bars) are indicated. Their affinity for Exp7 was scored from wild type level (+++++) to not detectable (-).